

LE/THE **WABUSH** BULLETIN

WABUSH MINES, PICKANDS MATHER & CO., MANAGING AGENT

- SCULLY MINE -

NOVEMBER 1967

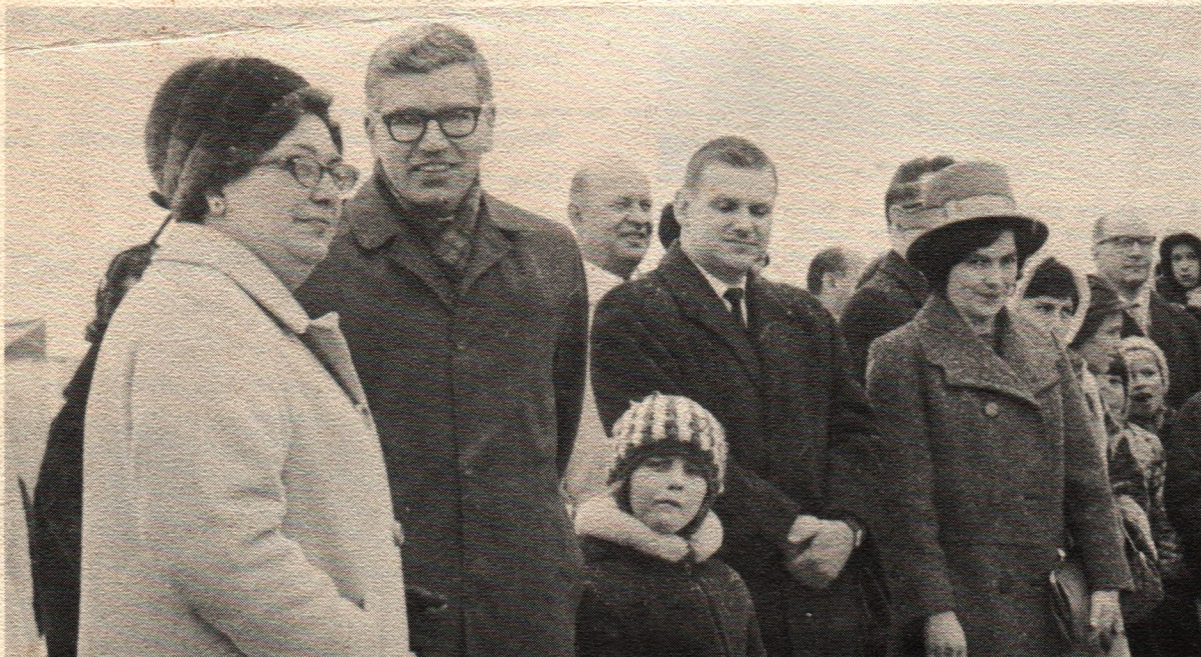
Wabush Hosts Government Representatives

The Honourable Judy LaMarsh, Secretary of State, arrived at Wabush on Sunday November 12th, 1967 to participate in Centennial Celebrations both at Wabush and Labrador City. The Minister was accompanied by Andy Chatwood, Member of Parliament, representing the Federal riding of Grand Falls - White Bay - Labrador. They were joined later by the following representatives of the Newfoundland and Labrador Government: The Honourables F.W. Rowe, Minister of Education and Labrador Affairs, J.R. Chalker, Minister of Public Works, G.A. Frecker, Minister of Provincial Affairs and Mr. D.L. Butler, Deputy-Minister of Labrador Affairs. Monsignor Légaré, Bishop for the Diocese of Schefferville and Labrador was also

among these important visitors.

In one of her talks the Honourable Judy LaMarsh stated: "During the Centennial Year I have tried to visit as many cities as possible in the ten Canadian provinces. I thought of ending this official tour of our country by visiting the youngest part of Canada".

The dignitaries were hosted by the members of the Wabush-Labrador City Centennial Commission. The local Centennial Commission aided in bringing the Centennial Caravan to Wabush. This event in Wabush generated a tremendous interest among the residents and 5,300 visitors saw the displays in the Caravan.



At a dedication ceremony in the Wabush area, the Honourable Judy LaMarsh looks very interested while Andy Chatwood is having a good look at the photographer. Also attending the ceremony were Jim Hogan, Chairman of the Local Improvement District of Wabush and Mrs. Hogan.

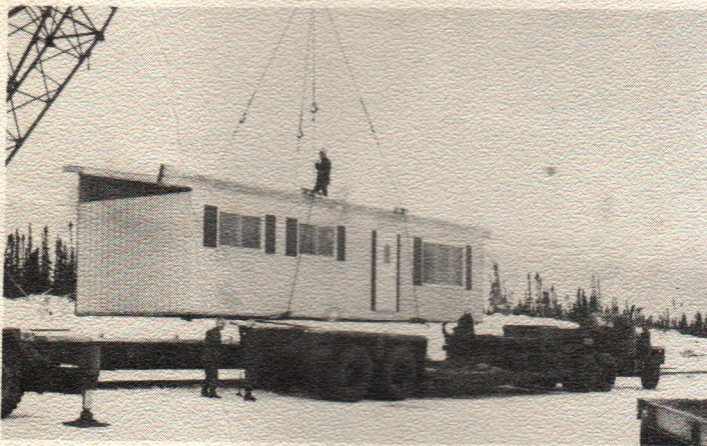
Does anyone recognize the young citizen between Andy and Jim?

Photo: Courtesy of R. McCallum.

100 NEW HOUSES IN WABUSH

Started in the Spring of this year the new housing development in Wabush is now nearly completed and the houses are ready for occupancy.

Built and assembled in a very special manner this type of home is one of the latest in the industry. The house is built at the factory and is transported to the site in such a way that they can be towed by trucks, lifted by a crane and transported on a railroad flat car if necessary. They



Of special design the prefab-houses can be easily transported and handled by conventional means. Here, one section of a house is lifted from a railroad flat car and placed on a float towed by a truck.

The houses will be sold only to the employees of Wabush Mines on a 30 year financing plan with very low interest rate. There will be no down payment required and the condition of sale will also include a serviced lot at no charge.

The purpose of selling the houses is to make Wabush a more stable community, and to give the citizens the opportunity to become owners so they can get involved in civic and community affairs.

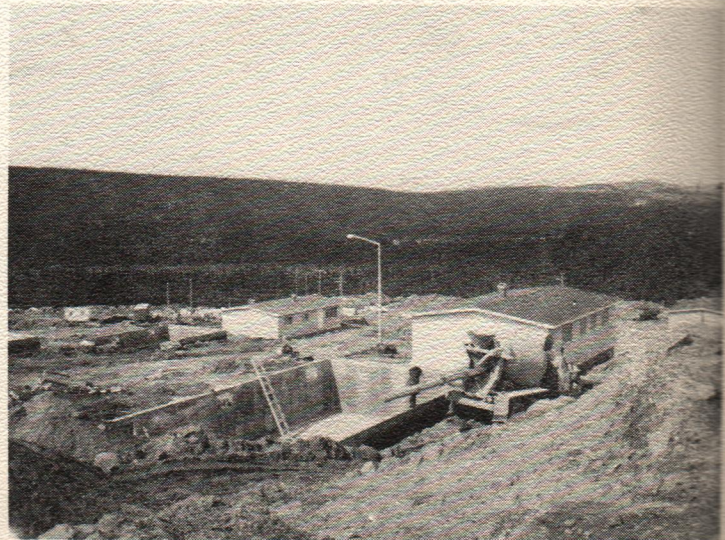


This is how Grenfell Drive looked on October 14th of this year. The new houses were built on Grenfell Drive, Shea Avenue, Cabot Drive and Shea Street.

come already equipped with the electrical wiring, the piping system, the heating conduits, all the kitchen cupboards and bathroom equipment.

The houses kept arriving at Wabush throughout the summer and were installed upon arrival on foundations prepared in advance.

Seventy-five houses have three bedrooms, and twenty-five have four bedrooms.



On the site, the sections of houses are placed on the foundations poured ahead of time. Under normal conditions two houses are placed on the foundations every day.

EDITORIAL

Who is The Company?

Who is the company? has been expressed in this interesting way.

The Company just came out with a new product.

The Company has opened new offices.

The Company will expand its operations and build new plants.

The Company does this. The Company does that.

Every day people speak about that intangible something, the Company, and what it needs, what it gives.

Some speak of it reverently as though it were supernatural. Others speak of it worriedly as though it were an octopus. Some speak of it affectionately as though it were a doting grandfather. Some speak of it confusedly. They're not sure just what it is.

Well, what is it, this Company we speak of so often? What is this invisible something that is so many things to

so many people?

The Company is people — what people depends on the point of view.

To the man next door, the company is you.

To the person looking for a job, it's the interviewer

To the supplier, it's the buyer.

To the customer, it's the man who gets his order

To the employee, it's his supervisor.

The Company is not always the same person. It is not always the same group of persons.

When we talk about the Company, we should think of what we really mean. The Company wears many hats — including yours. The way you wear yours determines, in part, what people think of your Company.

Did You Know That

- Iron ore deposits are widespread over the North American Continent and are mined in twenty-two states in the U.S. and in six provinces in Canada.

- Iron ore is found in almost every country in the world and is mined commercially in 40 nations.

- Over 40% of the Pointe Noire pellet production is shipped to Hamilton, Ontario making Wabush Mines the largest supplier of iron ore to the Canadian Steel industry.

- Pickands Mather & Co. is operating iron ore mining and processing facilities in three Canadian provinces namely, Ontario, Quebec and Newfoundland.

- Pickands Mather & Co. operates the only two pelletizing plant actually in operation in the Province of Quebec at Shawville and Pointe Noire.

- Pickands Mather & Co. and its Managed operations employ over 7000 persons.

- The mining properties managed by Pickands Mather & Co. will be producing in 1968, over 24,000,000 tons of iron ore.

- The Scully Mine was named in honor of V.W. Scully, Chairman of the Board of The Steel Company of Canada, Limited.

WISE OWL WINNERS - SCULLY MINE



Six employees of the Scully Mine were made members of the WISE OWL CLUB this month. The certificates were presented to them by Joe Caruk, Newfoundland and Labrador Superintendent of the Canadian National Institute for the Blind. The photo above was taken during Mr. Caruk's visit at Scully Mine.

Scully Mine, with Wise Owl Members Clayton Moore, John Murphy, Gilles Beauregard, Jacques Simon, Hayward Coombs and Ernest Davis. To the right Nels Sherren, Mechanical Maintenance Supervisor, Scully Mine. Seated in front, Joe Caruk of the CNIB.

From left to right : R.C. Baxter, Resident Manager,

These six men prevented serious eye injuries by wearing safety glasses at work.

SCULLY MINE PRODUCTION

	Target	Actual
October 1967	475,790 tons	433,235 tons
November 1967	460,510 tons	420,256 tons
December 1967	439,180 tons	