

# WABUSH

LABRADOR



PROVINCE OF  
NEWFOUNDLAND  
AND LABRADOR



## contents

---

Wabush Coat of Arms	2
History	3
Location	4
Population	5
Education	6
Health Care	7
Transportation	8
Financial	9
Media	10
Housing and Land	11
Manufacturing	12
Industry	13
Industrial Opportunity	14
Wabush Mines	15
Major Outlets	16
Tourism	17
Accommodations	18
Climate	19
Recreational	20
Utilities	21
Financial Status	22
Realty Data	23
Mining	24

Introducing . . .

Wabush

# Town of Wabush



**Town Hall**



**Provincial Building**

## *Significance of the Armorial Bearings of the Town of Wabush*

**ARMS:** The background of the shield is white (argent), divided by a red (gules) V-shaped area, representing the land. The vertical, zigzag blue (azure) stripes represent the power derived from the Churchill Falls. The three interlaced rings of gold (or) symbolize unity through the three major companies: The Steel Co. of Canada Ltd., Dominion Foundries and Steel Ltd. and Wabush Iron Co. Ltd., forming the community of Wabush.

**CREST:** The rabbit symbolizes the origin of the name Wabush, which is the Nascopi Indian word for "rabbit ground." The mural crown around the neck symbolizes civic achievement.

**MOTTO:** "Terra Progredimur" is translated as "From the earth we prosper."

**MANTLING:** White (argent) and red (gules) can be ascribed as the town's official colours.

**FLAG:** The flag takes the form of the design depicted in the arms (shield area only).



## history



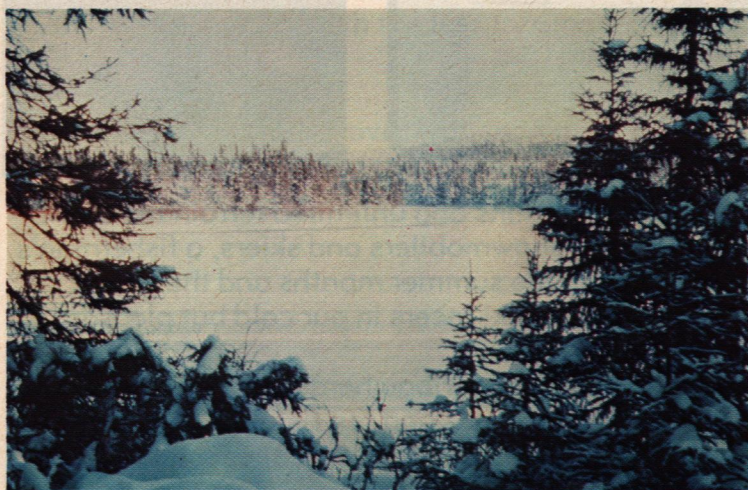
The Town of Wabush lies close to the canoe routes of the Indians who for hundreds of years would travel between the North Shore of the St. Lawrence River and their hunting and trapping grounds in the Hudson Bay and James Bay country, a trip of many hundreds of miles.

Apart from these bands of Indians, the territory lay dormant except for the occasional visit of a fur trapper.

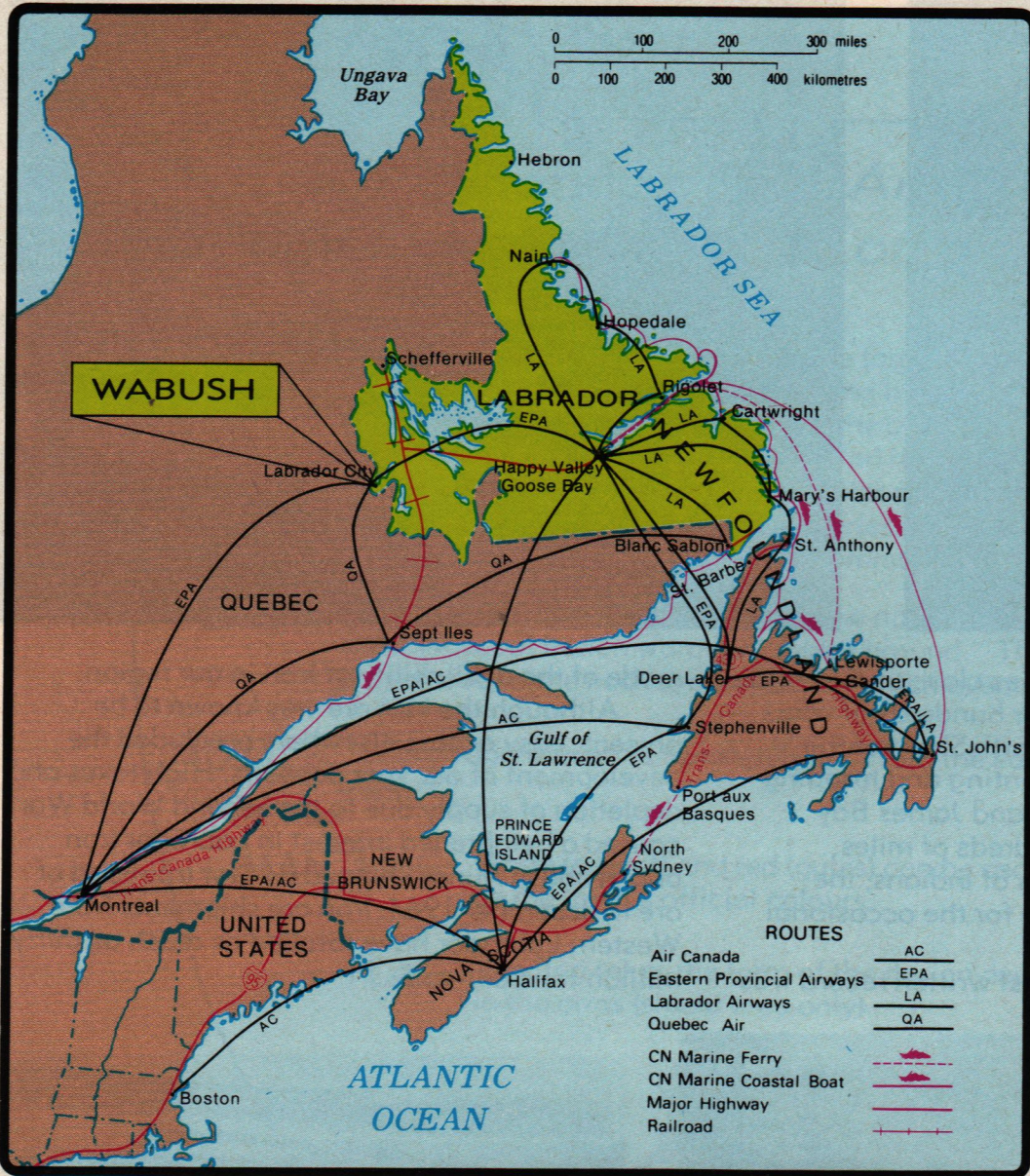
In the mid-1800s the first written record was

made of the availability of iron in our region.

Although the iron ore was known to be present, easy access elsewhere precluded the development of our vast deposits. High taxes and depletion of supply due to the Second World War caused a heightened interest in Labrador iron and Wabush Mines shipped its first trainload of ore in december 1964. Iron ore shipments from Western Labrador have totalled as much as thirty million tons annually.



# where is Wabush?



Our town is located at the extreme western tip of Labrador where it protrudes into the province of Quebec close to the height of land and the headwaters of the Ashuanipi River system which discharges into the Labrador Sea.

The region is a treasure of rivers, lakes and rolling hills supplying iron ore for our mines, canoe routes for a new breed of voyagers, fish for

our frying pans and unlimited terrain for our hunters, snowmobilers and skiers, a fisherman's dream in the summer months and the site of world class ski racers in our cold but pleasant winters.

Labrador caribou herds total more than half a million animals and our fish leave the most accomplished tall-tale-teller speechless.

# population

Statistics reveal that in 1981 the population of Wabush was 3155.

Population by specified age groups and sex:

Age Group	Male	Female
0 -4 years	150	150
5- 9 years	220	210
10-14 years	225	195
15-19 years	135	130
20-24 years	115	110
25-34 years	360	365
35-44 years	275	210
45-54 years	125	85
55-64 years	45	30
65-69 years	5	5
70 and over	0	10
<b>Total</b>	<b>1655</b>	<b>1500</b>

% of population 0-14	Male and female	36.45
% of population 15-44	Male and female	53.88
% of population 45-64	Male and female	9.03
% of population 65 and over	Male and female	0.64

Population in private households — 3085

Average number of persons per private household — 3.8

Total yearly income exceeds thirty million, of which some \$6,500,000 is contributed in taxes to the Federal Government to share with the less fortunate areas in Canada.

	Average Income
990 males 15 years and over with income	\$24,095
530 females 15 years and over with income	\$10,998



## education



J. R. Smallwood Collegiate

The J. R. Smallwood Collegiate is a one-building complex composed of Roman Catholic and Integrated areas with grades from Kindergarten to Level III. There are facilities for physical education, library, music, home economics, industrial arts and science laboratories. There are also special classes for the mentally handicapped and school facilities are used for adult education. The pupil-teacher ratio is excellent with the average class having less than 24 pupils. School buses are operated by the school boards.

All schools in the local area are operated under the regulations for the Province of Newfoundland. The province has a denominational system of education involving three major groups. These groups are the Roman Catholics, Pentecostals and Integrated. The Integrated group includes the Anglicans, Presbyterians, Salvation Army, United Church and Moravian denominations. In our area the Pentecostal pupils are part of the Integrated system. It should be emphasized that parents may still make the choice of which system their children will attend regardless of their particular religious affiliation.



Modern classroom

## health care

### Capt. William Jackman Memorial Hospital

There are two doctors and two nurses staffing the clinic at Wabush. Dental care is also provided by a dentist and his assistant.

A first-aid clinic at Wabush Mines handles minor accidents and also does eye and ear tests on its employees. An ambulance service (radio equipped) is provided by Wabush Mines. A subsidized air ambulance service is operated by the Government of Newfoundland and Labrador.



The fully accredited 43-bed-capacity Captain William Jackman Memorial Hospital located in Labrador City (8.8 kilometres from Wabush) offers medical services in general surgery, etc. Visiting consultants provide other services. Two ambulances (radio equipped) are available from the Iron Ore Company of Canada. The staff at the hospital presently handle approximately 62 outpatients and 25 inpatients daily. The Salvation Army is responsible for the running of the hospital.



Wabush Clinic

## transportation

Wabush Airport possesses one of the most modern terminals in Canada, serving the twin towns of Wabush and Labrador City. Gagnon and Fermont, Quebec, inhabitants also use our facilities. The airport contains a restaurant and two car rental agencies.

Eastern Provincial Airlines provide regular freight and passenger service to Churchill Falls, Goose Bay and the major centres of population on the island of Newfoundland.

Quebecair provides similar service to the Quebec City/Montreal/Toronto hub as well as the major centres of the lower St. Lawrence Valley and the highly industrialized Saguenay region.



**Airport**

Several bush plane operators provide service to the mining companies for exploration purposes as well as transporting large numbers of fishermen and caribou hunters who desire to go farther afield in search of their quarry.

The bulk of material — such as food, fuel, household goods, etc., is brought into the region by rail.

The Quebec North Shore and Labrador Railway originates in Sept Iles, Quebec and runs ore, freight and passenger service trains into Labrador West with a somewhat reduced service to Schefferville, PQ.

Iron ore originating in Wabush is transported south to Pointe Noire, PQ, by trains of the Wabush Lake Railway over the same line as the QNS&L railway.

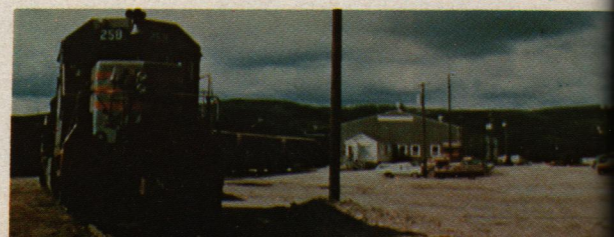
Mount Wright, Quebec, situated 40 kilometres from Wabush-Labrador City is served by the Cartier Railway which has its southern terminal at Port Cartier located 64 kilometres off Sept Iles.

A highway link to the south-west which will connect Labrador West with Baie Comeau on the North Shore of the St. Lawrence is nearly completed. Travel eastward to Churchill Falls and Goose Bay will soon be provided by the Trans-Labrador Highway, which will connect with ferry and steamship service to the island of Newfoundland.

**QNS&L Railway**



**Wabush Lake Railway**



Wabush is served by the Bank of Montreal with branches of the Canadian Imperial Bank of Commerce and The Bank of Nova Scotia a few minutes drive away in Labrador City. The Bank Canadian Nationale has a branch in Fermont.

For those requiring accounting or auditing services there are two chartered accounting firms in Labrador City. In addition, a number of private individuals are qualified to assist with bookkeeping and related problems.

### FEDERAL GOVERNMENT

Information on the various assistance and incentive programmes may be obtained through the "Provincial Regional Department of Development" office at Wabush, phone number (709) - 282-3755 or (709) 282-5600.

Frequent visits are made to the area by the Federal Business Development Bank (and CASE). Information is available directly through their office in Corner Brook at phone number 709-639-9126. The bank offers term loans to new and existing businesses. CASE offers an advisory service. Other federal agencies are also charged with the responsibility of assisting all types of businesses with financing expansions, modernization and other services.

### PROVINCIAL GOVERNMENT

Regional office of the Department of Development at Wabush co-ordinates the various provincial Government incentive grants, loans and programmes. For further information contact:

Department of Development  
Regional Office  
Sir Wilfred Grenfell Hotel  
Wabush, NF A0R 1B0  
709-282-5600

Detailed information is available at their offices concerning the Department of Rural, Agriculture and Northern Development Programmes.

Newfoundland and Labrador Development Corporation services:

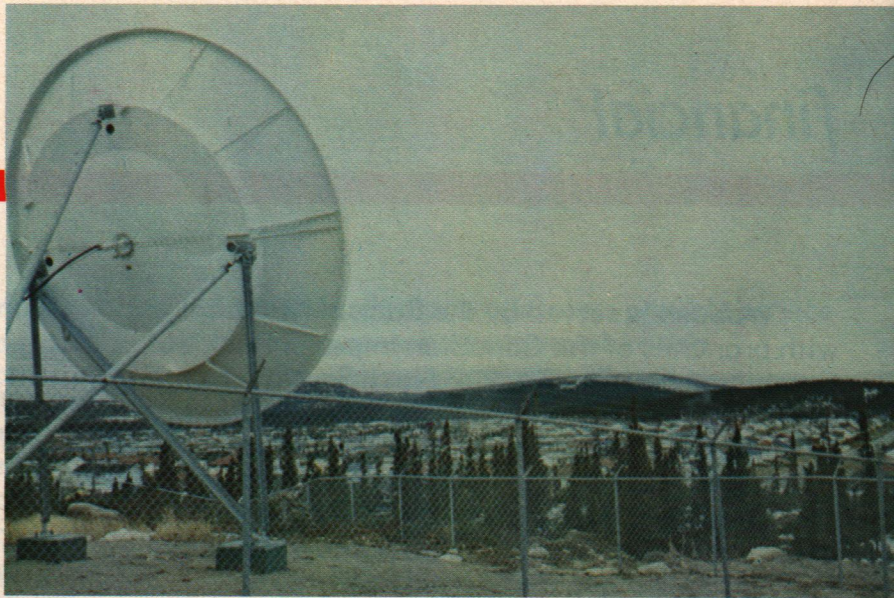
#### Federal Government Offices:

Employment & Immigration Canada	944-3655
Fisheries and Oceans	282-3021
Canada Post Corporation	282-6903
Transport Canada	282-5412
Transport Canada	282-6124

#### Provincial Government Offices:

Department of Culture Recreation & Youth	282-3118
Department of Resources & Lands	282-6881
Department of Health	944-5000
Department of Justice	282-6617
Department of Lands & Manpower	282-3611
Department of Public Works	282-3406
Department of Social Services	282-6651
Department of Transportation	282-3311
Nfld. & Labrador Housing Corporation	944-7474
Department of Development.	282-5600

## media ortation



### **Radio:**

---

Radio service in the Wabush and Labrador City area is provided by the Humber Valley Broadcasting Company Limited (CFLW) and the Canadian Broadcasting Corporation. CBC also broadcasts in French.

### **Television:**

---

Canadian Broadcasting Corporation and (CRRS) Community Recreation and Rebroadcasting Service Association provide color television in both English and French.

### **Newspaper:**

---

Aurora (Weekly)  
St. John's (Daily)  
Montreal Gazette (Daily)

### **Telephone:**

---

Newfoundland Telephone Company – full service

### **Telegraph:**

---

CN-CP Telex and several modes of transmission (offices at the Carol Lake Shopping Centre, Labrador City).

# housing and land



The Town of Wabush is situated on the side of a hill with its architect-designed homes all looking out over the surrounding countryside. Several lakes located within the town limits add to the attractiveness of the physical setup of the town.

Housing consists of two-storey homes, ranch style bungalows, semi-detached homes, row houses and some apartment buildings.

The homes are well-maintained and nicely landscaped.

Well-disciplined parks and public buildings blend in with the general layout.

A trailer court is situated at the north end of town.

Wabush is governed by an elected council, consisting of a mayor and six competent councillors.

The town had its beginning in the late fifties (1957-1959) and by 1962 residents moved into the modern townsite of Wabush. Wabush today has a stable population of 3155.



1985\*\*

Private Dwellings	883
Single Detached	314
Quads	168
Duplexes	82
Apartments	169
Mobile Homes	150

Land available for Residential Construction:

Serviced Lots 100 Located at Jean Lake  
Sub-Division

Price Per Lot \$5000-\$8000 January 1985

\*Total land area in square kilometres 40.61

\*Statistics Canada  
\*\*Town Council

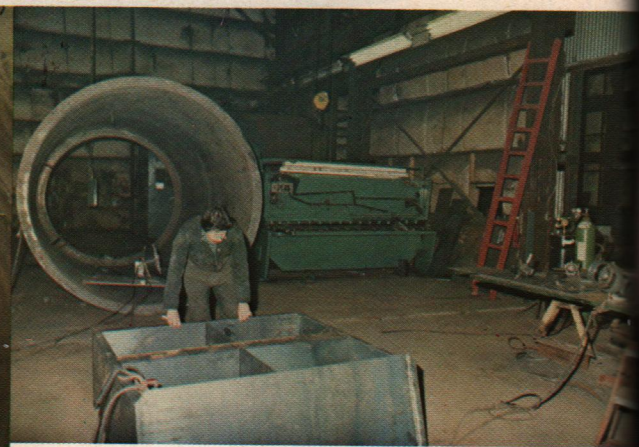
## manufacturing

The huge ore processing facilities require every conceivable type of spare part to help keep them operating 24 hours a day, three hundred and sixty-five days per year.

Approximately \$100,000,000 is spent on parts and services by the mining companies of Labrador West.

Many services are still *unavailable here*, resulting in work having to be sent out of the area. The plus side of this situation is that *many opportunities* exist for the entrepreneur willing to spend some time and energy in establishing a business here.

Williams & Wilson Limited being one of Canada's largest stocking distributors of industrial products also provides services in the wear-resistant material area, with in-shop and on-site capabilities. Above shows work being performed at the Wabush facilities.



**Heavy steel works is a specialty at H & H Iron Works.**

## industry

### Industrial Park

#### Contact:

Town of Wabush Phone (709) 282-6953  
 Department of Development  
 Regional Office (709) 282-5600

The town has appointed 50 acres of serviced land available for immediate use. Approximately 197 acres (80 hectares) are also available for future development and use.

#### Price per acre in the Industrial Park:

\$9200 without rail service  
 \$11200 with rail service

Rail Main line adjacent to park, spur lines may be installed.

Airport Adjacent  
 Road Adjacent

The centrally located industrial park serves the Iron Ore Company of Canada, Wabush Mines, the towns of Wabush and Labrador City, with such products and services as:

- Car & truck dealership
- Construction equipment sales & services
- Freight distribution
- Concrete
- Heating & plumbing sales & services
- Steel fabrication and machine shop
- Industrial equipment and supplies
- Explosives manufacturer
- Beverage distributors
- Food wholesaler
- Beer & Ale Distributors
- Bus service
- Landscaping & general contracting companies
- Automotive repair shop
- Moving & storage company

Manufacturer of explosives from raw material (except for two ingredients which are added at the mining complex)

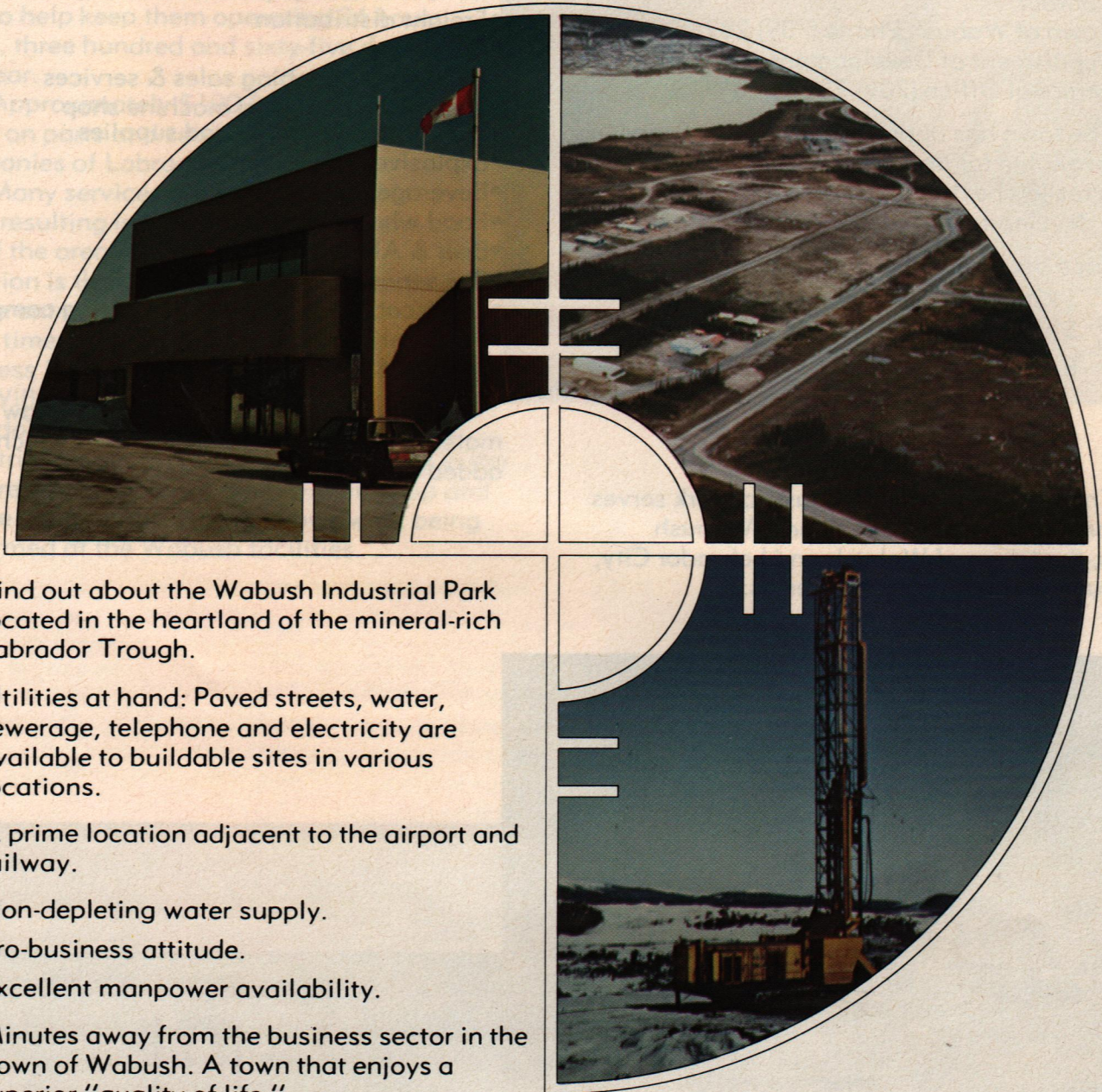


CIL Inc.



## industrial opportunity

Step into the future with us



- Find out about the Wabush Industrial Park located in the heartland of the mineral-rich Labrador Trough.
- Utilities at hand: Paved streets, water, sewerage, telephone and electricity are available to buildable sites in various locations.
- A prime location adjacent to the airport and railway.
- Non-depleting water supply.
- Pro-business attitude.
- Excellent manpower availability.
- Minutes away from the business sector in the Town of Wabush. A town that enjoys a superior "quality of life."

*Available properties. Reasonably priced. An outstanding choice for large or small companies.*

## Wabush mines — prime industry



Facilities at Wabush Mines represent an investment of 300 million dollars of private capital.

The Wabush operation has the capacity to produce sufficient concentrate for its pellet plant at Pointe Noire. Rated capacity is 6.1 million metric tonnes per year.

It employs approximately 600 full-time and

part-time employees at its complex and railway.

As mining is the major employer, a number of suppliers have established here.

They supply parts and services necessary to the efficient production of ore concentrate. Other businesses are expected to add to the growing industrial sector.

# major retail outlets

## Wabush Shopping Plaza

*Major Department Store:*  
Peoples

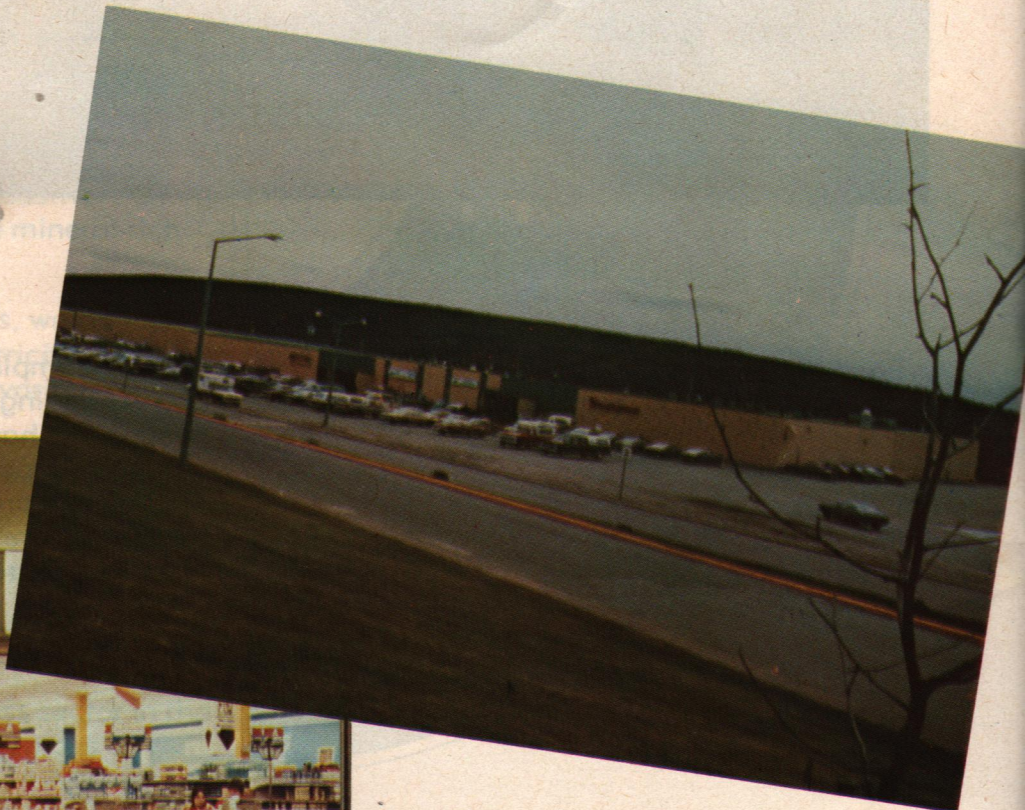
*Major Supermarket:*  
Dominion

## Other Outlets near Complex

- Porters Cash & Carry
- Grenfell Corner Store
- Ray's Sales & Service Centre
- Wabush Gulf (Gas Bar)
- Taxi Service
- Jed's Pub

## Plaza Outlets

- Wabush Video & Confectionery
- Hearns Carpet
- Newfoundland Liquor Commission
- Canada Post
- Bank of Montreal
- Snack Bar Limited — Restaurant
- Atlantic Loto Booth
- Fishnet Limited



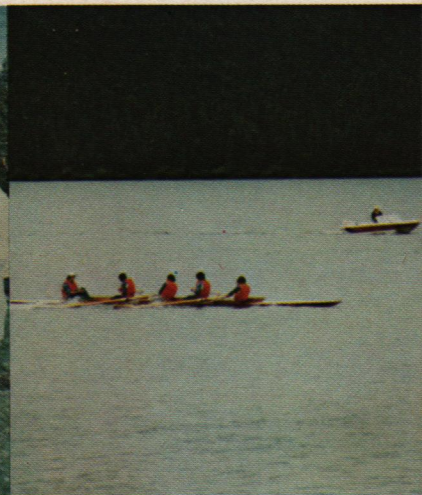
*choice for large or small companies.*

## tourism



Elephant Head Municipal Park 5 km from the Town of Wabush attracts swimmers, beginner canoeists and hikers to its picnic facilities and nature trails.

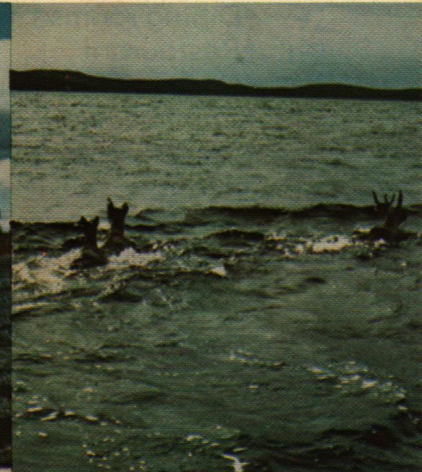
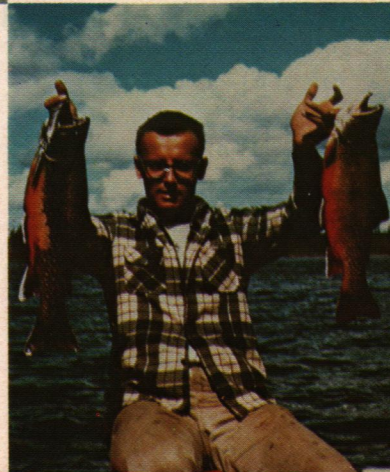
The Winter Carnival is held in March and the annual Regatta is held in August. Fun-filled days and nights provide satisfaction for the family and sports-minded participants.



Unsurpassed fishing excitement awaits you. Fly out to the wilderness lakes and rivers. Experience the fighting lake trout and the battling Ouananiche. Feel the fish snap at your tackle.

Labrador contains the largest caribou herd in the world. The Government of Newfoundland and Labrador now offer non-residents the opportunity to hunt these magnificent animals. You too may take a trophy rack home.

Ski Labrador from November through April and enjoy the trails of the professionals. The World Cup XC Ski Final was held here in 1983. Just a few minutes from Wabush you will also enjoy the downhill runs, night skiing and entertainment at the Smokey Mountain Ski Club.



## accommodations



### **The Sir Wilfred Grenfell Hotel:**

- 53 Rooms
  - Color TV
  - Close to major attractions
  - Adjacent to shopping plaza
  - Banquet and meeting room facilities
  - Dining rooms
  - Restaurant
  - Convenience store
  - Comfortable lounges
  - Barber shop
  - Beauty salon
  - Next door to recreation facilities
  - Travel agency
  - Regional development association
- Relaxed and Inviting Atmosphere

# climate



Western Labrador, notwithstanding its northern location, is blessed with a climate that allows full and enthusiastic participation by its inhabitants in all types of outdoor activities.

Summer, although short, can be hot and sunny. Our tennis courts, ball parks and golf course are in constant use, catering to the needs of the expert as well as the duffer.

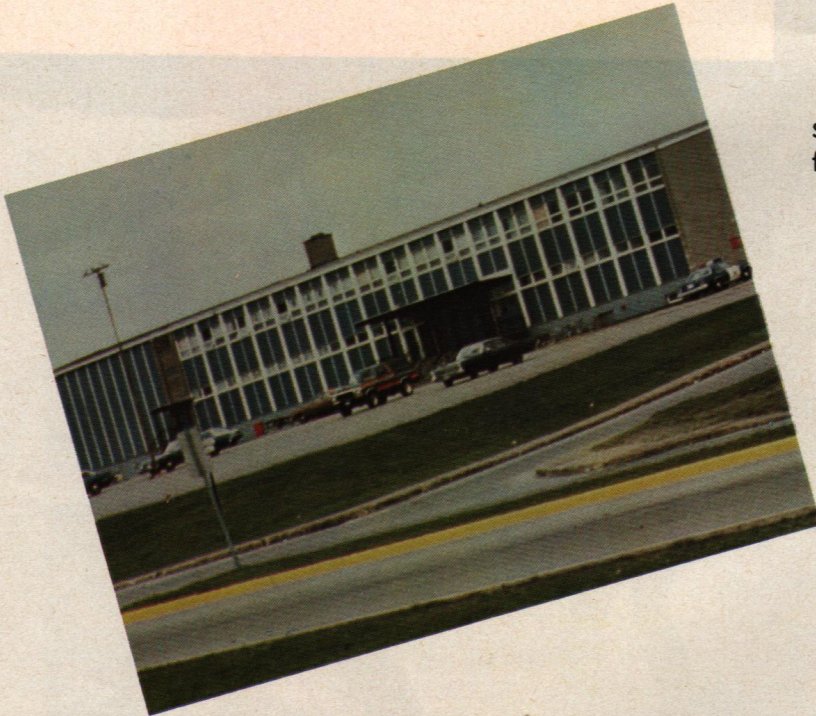
Well-organized sports activities have resulted in many of our young athletes participating at the provincial and national level with distinction.

In the wintertime, abundant snow turns the town and countryside into a beautiful winterscape. Happy skiers, snowmobile enthusiasts, hunters and ice fishermen go far afield to enjoy the crisp, sunny days. If you are not an outdoors person when you arrive in our town, it is a safe bet that you will become one almost immediately.

Mean summer temperatures of a comfortable 21°-22° Celsius and our winter days a healthy minus 36°C.

	J	F	M	A	M	J	J	A	S	O	N	D	Total
Days with Rain	0	0	1	3	8	15	19	18	16	8	3	1	92
Days with Snow	18	14	15	13	1	1	0	0	4	14	19	17	122
Days with Precipitation	19	14	16	15	13	15	19	18	18	18	19	17	201
Total Bright Sunshine Hours 1951-1980	80.6	110.3	147.2	143.4	204.1	190.5	197.3	190.5	92.5	66.0	55.2	68.4	1546.0

## recreation facilities



Recreational pursuits are widely diversified at our well-managed and maintained facilities.

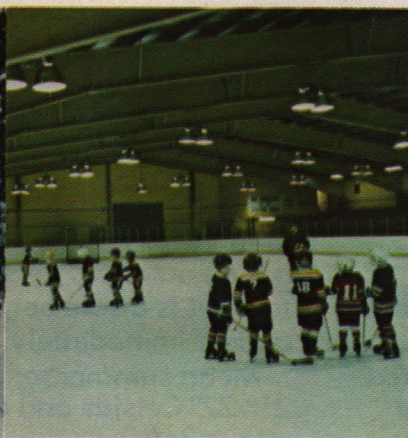
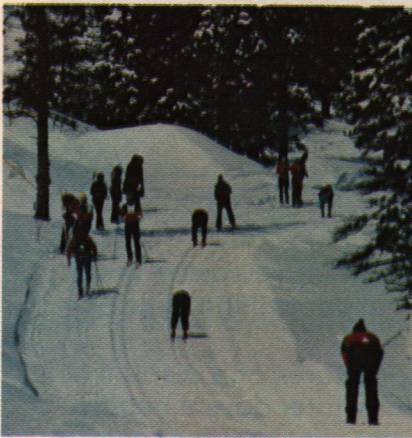
### Recreation Centre:

- Indoor swimming pool & saunas
- Bowling alleys
- Gynasium
- Fitness studios
- Arena — hockey, figure skating
- Soccer field
- Baseball/Softball park (2)
- Boating
- Tennis court
- Cross-country ski trails
- Hiking trails

We share recreational and sports activities with Labrador City — golf, curling, world-class cross-country and downhill skiing, etc.

For the family, in addition to the above, there are many other organizations of interest; Cubs, Scouts, Brownies, Guides, Sea Cadets, organized sports at all levels, figure skating, gymnastic and ballet clubs, Kinsmen Club, RC Legion, dart league, as well as church-affiliated activities and groups such as Al-Ateens and Al-Anons.

All major Christian faiths are represented in Labrador West. This area has built up an excellent tradition of goodwill, hospitality and friendship that cuts across all cultural, linguistic and religious barriers.



## utilities and services

**Water:** Water supply is from Lake Wahnahnish. Pumping capacity 4,000,000 g.p.d. Average consumption — 600,000 g.p.d. Pressure maintained at 50-70 p.s.i. Water is chlorinated but no fluoride added.

**Sewerage:** There are three sewerage treatment plants. Outfall into Jean Lake and Little Wabush Lake.

**Garbage:** Garbage and waste disposal is taken care of by the town, at its new incinerator, on a twice-weekly schedule.

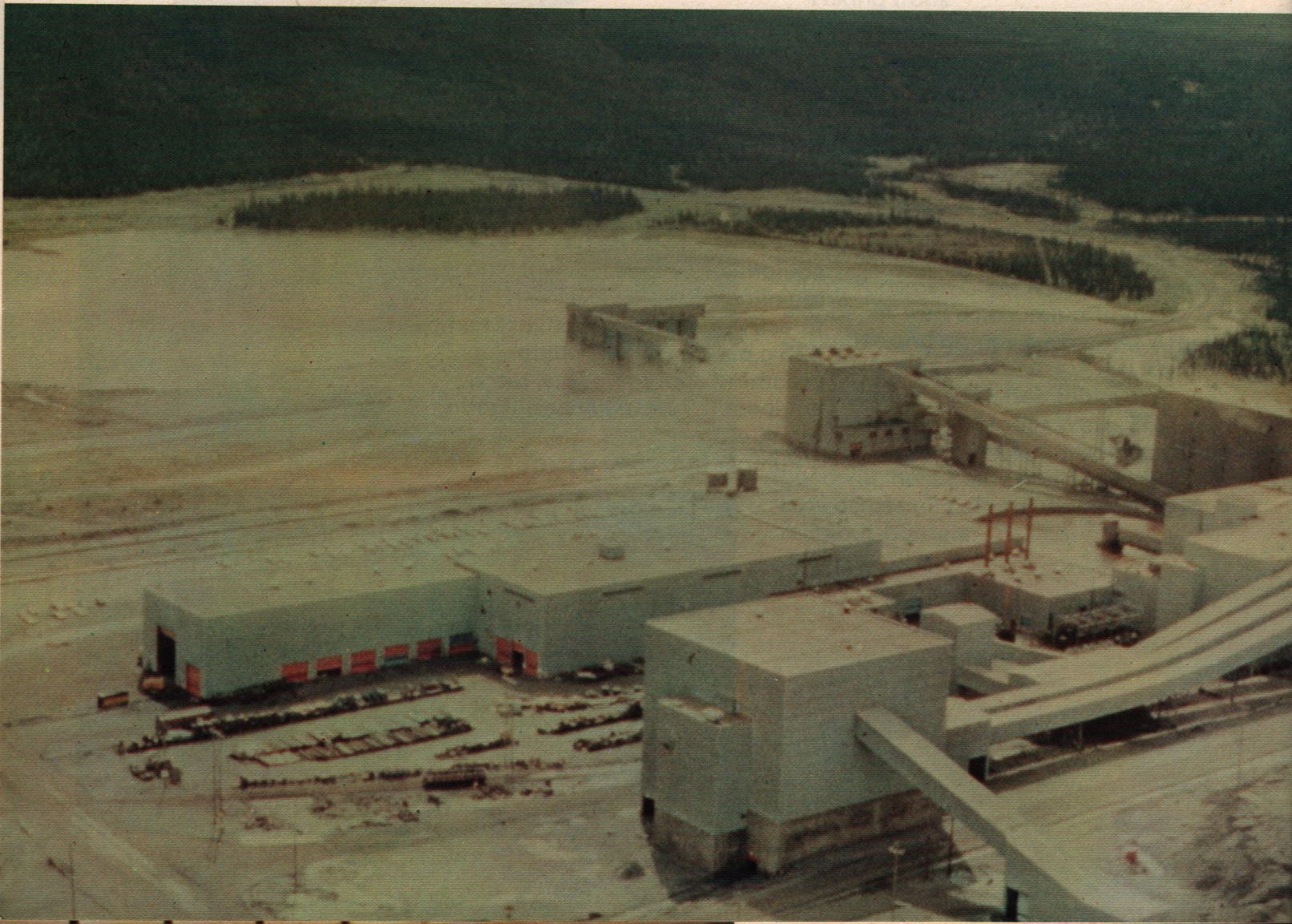
**Protection:** There is one full-time Municipal Enforcement Officer hired by the town who enforces Municipal Regulations. Criminal Acts are handled by the Royal Newfoundland Constabulary.

**Volunteer Fire Brigade:** Thirty trained volunteer firemen serve the community. Present equipment includes: one pickup truck (auxiliary equipment carrier), four forestry pumps, one auxiliary pump 425 g.p.m., one Hale pump, four breathing apparatus sets, rescue equipment, forestry hoses, lighting plant, etc.  
1 Pumper truck 840 g.p.m.

## financial status

<b>Financial Status*</b>	1984	1983	1982	1981	1980
Tax Revenue	1120137	1128482	1097596	934357	1053162
Provincial Government Grants	787450	633698	626125	653519	670402
Wabush Mines Grant In Lieu	305000	290000	290000	265000	170746
Total Revenue	2212587	2052180	2013761	1852876	1894310
Debit Service — Principal	126023	75797	88724	35712	1654090
Interest	208169	131762	132208	79093	86022
Capital Expenditures	317547	269251	124856	434914	162208

\*Source Wabush Town Council



# realty data

mining

## Property Tax:

15 mills is applied to assessed value of Real Property. Assessed values are considered low.

## Business Tax:

Fixed Place of business — 7 mills applied to assessed value of Real Property  
 No fixed place of business —  $\frac{3}{4}$  of 1% Gross Turnover  
 Minimum business tax of \$150.00 for any business.

## Water & Sewerage Rates:

Private Residential — \$180.00 per annum  
 Apartment — \$180.00 per annum  
 Commercial & Light Industrial — \$198.00 per annum  
 Industrial — \$330.00 per annum

## Poll Tax:

Rate per person. — \$ 80.00 per annum

## Building Permit Fees:

Signs, fences, minor repairs — \$ 1.00  
 Residential storage sheds — \$ 2.00  
 Porches and major repairs — \$ 5.00  
 Residential Garages — \$ 10.00  
 Residential Houses — \$ 20.00  
 Commercial, Industrial & other  
 Major Developments — \$ 30.00  
 Apartments per Unit — \$ 15.00

Commercial, Industrial, other major developments and apartments are charged an inspection fee of \$5.00 per \$1000.00 of estimated cost of construction to a maximum of \$500.00.

## mining | status

Millions of years ago, nature blessed Labrador with the gift of huge deposits of iron ore.

Exploration of these riches began some thirty years ago and has continued unabated up to the present time.

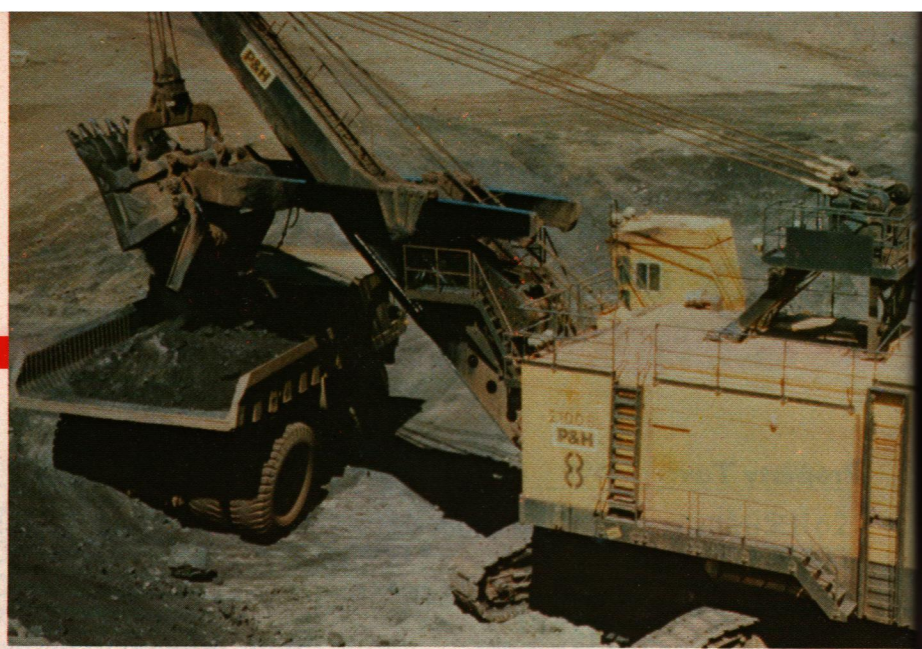
Although competition from other sources in recent years has caused some concern, the mining companies here have tightened their belts and have become lean and efficient in response to the challenge.

Computerized diesel — electric trucks and shovels, using the most modern technology available, move more ore to the concentrators at less cost than experienced in the past.

Milling and concentration improvements have been responsible for the production of better quality products with increased demand from customers in the International and Canadian markets.

With mining tied closely to Canada's and the world's economic well-being, marketing results show that Labrador's iron mines are ready, willing, and able, to take advantage of the ever-improving economics of the steel-producing nations.

Wabush approaches the future with confidence.



Date Incorporated April 11, 1967

Population (1981) 3155

Land Area (km)<sup>2</sup> 40.61

Provincial Electoral

District: Menihek

Federal Electoral

District: Grand Falls

White Bay-Labrador

***For Further Information Please Contact:***

Town Manager  
Town of Wabush  
15 Whiteway Drive  
Wabush, Labrador  
Newfoundland, A0R 1B0  
(709) 282-6953

**CREDITS:**

*Photos:* Dave French, Stu Williamson, Fred Barter, Walter Hlipko, Phyllis Moore, Wabush Mines, Department of Development Larry Jenkins.

*Layout:* John Andrews Sr.

*Printed by:* Robinson-Blackmore Printing & Publishing Ltd., Grand Falls, Nfld.