

THURSDAY, July 8th, 1971



PRINTED AND PUBLISHED IN LABRADOR CITY, NFLD., PRICE 10¢

VOLUME 2, ISSUE 33, P.O. BOX 331, PHONE 944-2311 or 2045

J. S. ROBINSON, PUBLISHER

Note: The comments and opinions expressed in this paper are not necessarily those of the publisher.

INSIDE: TV Guide	New Postal Rates
Church Page with	Nats
The Daily Light	Crossword Puzzle
Club News	U.S.W.A. Notices
Sports	Personal Notices
Advertisements	Notes and Comments

NEWFOUNDLAND and LABRADOR AMATEUR SOFTBALL ASSOCIATION LADIES CHAMPIONSHIPS TO BE HELD IN LABRADOR CITY WEEKEND OF THE 16th.

First, a message from the president:

As president of the Newfoundland and Labrador Amateur Softball Association, it is with pleasure that I wish the teams entered in the 1971 Senior Ladies Championships the best of luck during the contest.

The holding of this championship at Labrador City marks a giant step forward for softball in our province. Labrador City was one of the first communities to take part in our Association Tournaments, and represented the province at the Canadian Men's Tournament at Saskatoon in 1967.

The NLSA is very interested in all of its member leagues, especially those in Labrador and particularly our ladies leagues. Therefore it is only fitting that this season, the biggest in our history, we should hold the ladies championships in Labrador City.

The congratulations of the Association are extended to all those residents of Labrador City who have assisted your hard working executive in making all the arrangements necessary to host us. We are very aware of your reputation of hospitality.

On behalf of all your visitors, and especially on behalf of NLSA executive members who will be here, let me thank you for inviting us. We are extremely happy to share this occasion with you.

Yours in softball,
Dee Murphy,
President,
NLSA.

The Tournament gets underway Friday evening, July 16th, with the opening game slated for 7:00 p.m. The Tournament will last all day Saturday and Sunday, with the final games to be played either at 2:00 p.m. Monday, or if needed at 4:00p.m.

There are still accomodations required for approximately 40 ladies. YOUR HELP IS NEEDED. If you are willing to take one or more ladies PLEASE CALL 944-5007.

The schedule shall appear in the next edition.

SPORTS

Our Senior Ladies ALL-STARS ventured to Schefferville over the past week-end and made an excellent showing, winning all four games. It is said that the whole team played exceptional ball, backing up the fine pitching of Marlyn Beattie. It is reported that the field condition there leaves much to be desired, rocks on the field make the ball careen unexpectantly-- and this led to one of the Schefferville's players receiving a broken nose.

Omitted in last week's story: On Saturday, June 26th, Woolworths recorded the first triple play of the season, in the bottom of the fourth inning against Handy Caps.

In the only League game played last week, Lionettes won over Bowrings, the score being 12 to 7, with Beattie the winning Pitcher and Boote the loosing pitcher.

Following games scheduled for the coming week:

Wed. July 7th:	Lionettes vs Handy Caps	8:00 p.m.
Fri. July 9th:	I.O.C.C. vs Woolworths	6:00 p.m.
	Bowrings vs Indians	8:00 p.m.
Sat. July 10th:	Woolworths vs Lionettes	6:00 p.m.
	Indians vs I.O.C.C.	8:00 p.m.
Wed. July 14th:	Handy Caps vs Bowrings	8:00 p.m.

		MEN'S SOFTBALL		"A" League	
SCORES FOR THE PAST WEEK:				Winning	Loosing
Tues. June 29th	Saints 7, Braves 3			Duke	Hong
Thurs. July 1st	Saints 17, C.Cleaners 4			Duke	Barron
Sun. July 4th	Braves 15, C.Cleaners 11			Young	Barron
	Saints 4, Wabush 0			Duke	Corcoran

The Game between the Brave and Carol Cleaners is reported to be under protest.

"B" League

SCORES FOR THE PAST WEEK:

Wed. June 30th	Indians 8, Bechtel 6		Travers	Hudson
Sun. July 4th	Juniors 35, Cafeteria 2		Bullen	McGowan

COMING GAMES.

"A" League

Thurs. July 8th	Braves vs Carol Cleaners	6:30 p.m.
Sun. July 11th	Carol Cleaners vs Saints	6:00 p.m.
	Braves vs Wabush	8:00 p.m.
Tues. July 13th	Saints vs Braves	6:30 p.m.

"B" League

Wed. July 7th	Cafeteria vs Indians	6:00 p.m.
Sun. July 11th	Cdn. Bechtel vs Juniors	1:00 p.m.
Mon. July 12th	Juniors vs Cafeteria	6:00 p.m.
	Indians vs Cdn. Bechtel	8:00 p.m.

MINOR SOFTBALL SCHEDULE (LAB. CITY)

Thurs. July 8th	Legion vs O'Brien Hall	6-7 p.m.
	Lions vs Ward & Boyack	7-8 p.m.
	Target Taxi vs Legion (12-15)	8:15 p.m.
Fri. July 9th	Target Taxi PRACTICE	4:30 - 6:00 p.m.
Sat. July 10th	Desrosier vs City Motors	1:00 p.m.
	Ward & Boyack vs O'Brien Hall	2:15 p.m.
(12-15)	Braves vs Carol Painters	3:15 p.m.
Sun. July 11th	Legion PRACTICE	9:30 - 10:45 a.m.
	Braves PRACTICE	10:45 - 12:00 p.m.
Mon. July 12th	Mussens PRACTICE	4:30- 6:00 p.m.
Tues. July 13th	City Motors vs Legion	6:00 p.m.
	Lions vs Desrosiers	7:00 p.m.
	Mussens vs Target Taxi (12-15)	8:15 p.m.
Wed. July 14th	Desrosiers vs Ward & Boyack	6:00 p.m.
	O'Brien Hall vs City Motors	7.00 p.m.
	Legion vs Braves (12-15)	8:15 p.m.

DON'T SEND YOUR BOY TO THE GAME, TAKE HIM

AND STAY TO SEE THE GAME.

WOODAWORTH'S

SUPER SAVINGS

WHILE
QUANTITIES
LAST

Men's
SUEDE BOOTS
\$14.99

Boy's
Long Sleeve
SPORT SHIRTS
\$2.77

Denim
Bermuda
SHORTS
\$3.97

Boy's
SLACKS (4-6X)
\$2.99

Lawn

CHAIRS
\$4.88

#####

SWEATER -

VESTS

1/2 PRICE

#####

Men's

WORK GLOVES

25% OFF

#####

Assorted

PICTURES

\$13.88

#####

Sleeping

BAGS

15% OFF

#####

"Holiday"

LUGGAGE

10% OFF

#####

FOLDING GATE

\$4.88

Men's
High Style
PANTS
\$7.99

ALL
FISHING
GEAR
20% OFF

Harry Hibbs
LATEST
L. P.
\$1.99

Ladies
SANDALS
\$3.99

LOOK FOR THESE

AND MORE EXCITING BARGAINS

STORE HOURS:

MON., TUES., WED., SAT. 9 A.M. - 6 P.M.
THURS. & FRI. 9 A.M. - 9 P.M.

CHURCH PAGE

OUR LADY OF PERPETUAL HELP
REV. F. LEMIRE, REV. J. LAPERRIERE
O.M.I.
7:00 p.m. Mass (Sat Evening)
9:00 a.m. Mass
11:00 a.m. Mass
5:00 p.m. Mass (French)
7:00 p.m. Mass
Weekday Masses 7:00 p.m.

OUR LADY OF ASSUMPTION (WABUSH)
REV. JOS. BLOUIN, O.M.I.
10:00 a.m. Mass
7:00 p.m. Mass
Weekday Masses 5:00 p.m.

PENTECOSTAL CHURCH, GLAD TIDINGS
PASTOR WM. GILLETT
11:00 a.m. Morning Worship
3:00 p.m. Sunday School
(For All Ages)
7:00 p.m. Evangelistic Service
Tues. 8:00 p.m. Prayer Meeting
Wed. 7.30 p.m. Choir Practice
Thurs. Young People Meeting

ST. PETER'S ANGLICAN CHURCH
ST. PAUL'S ANGLICAN CHURCH
CAROL UNITED CHURCH
Combined Services at 11:00 a.m.
Rev. Roger York of Humber United
will taking the service on July 11th.

SALVATION ARMY CITADEL
LIEUT R. BUNGAY
11:00 a.m. Holiness Meeting
2:30 p.m. Sunday School
7:30 p.m. Evangelistic Service
(Nursery During 11:00 Service)

Monday 6:30 Band Practice JR
Wednesday 7:30 Corps Cadets
Thursday 7:30 Band Practice SR
8:00 Home League
Saturday 7:00 Youth Group

CHRIST CHURCH (Wabush)
REV. J.B. DICKEY
9:45 a.m. Church School
11:00 a.m. Morning Worship
(Nursery Held During Worship)

LA FOI BAHAI'IE
Pleins Feux sur le Nouvel Ordre
Mondail.
Tous les Mardi a 8:00 p.m. a
l'Arene de Labrador City.

BAHA'I FAITH
Focus on a new world order; every
Tuesday, 8:00 p.m. Labrador City
Arena.

DAILY LIGHT by D.R. Parsons

Have mercy upon me, O God, according to thy loving kindness:
according unto the multitude of thy tender mercies blot out my
transgressions. Psalm 51:1.

This Psalm should strike a tender chord in the heart of every man,
for who can say that he has not sinned? And who, knowing God, has
not cried for mercy? This is the utterance of a full heart which
was crushed under a burden of sin. The Psalmist felt the weight of
the sin, he could not hide or belittle it. There was no possibility
of trying to excuse it or apologize for him. He knew that the law was
just, and that the law condemned him. His cry came because of guilt.
The only hope in such a case is mercy; the mercy of God.

There is a graduated list of three words marking the mercy of God;
note first that "mercy" denotes that feeling we have, which expresses
itself by moaning over one we love and pity; the second, "steadfast
love" (loving kindness) is of a higher degree of goodness and suggests
a bountiful flowing or gushing of compassion; the third, "tender mer-
cies" of even greater degree, denotes what the Greeks called "most
tender pity," that which moved the innermost passions, the moving of
"the Heart". This would signify the highest type of compassion and
mercy man is able to understand, and God is able to give.

It has been alleged that a charge against a certain official in
"high places was about to be erased from the police record when dis-
covered by an investigatiog committee. Should this have happened,
there would have been no official record of the crime; it would have
been erased, blotted out. The Psalmist asks for a erasing of his in-
dictment from the official record. He knows that he is guilty, he
recognizes the justice of the law, he knows that he should be con-
demned, but he calls on that great Mercy to wipe out all record of
this transaction. That is, in fact, what God claims to have done:
"I have blotted out, as a thick cloud, thy transgressions, ans, as
a cloud thy sins: return unto me; for I have redeemed thee."
(Isaiah 44:22)

Today would be a good time to stand before you God and consider
the magnificent wonder of it all.

LEGAL CARD

DAVID B. SPARKES

LAWYER — ADVOCATE

LABRADOR CITY
SHOPPING CENTRE
MALL

PHONE:
944-5555 BUS.
944 5948 RES.

CLUB NEWS

ROYAL CANADIAN LEGION - 47- LABRADOR CITY

Wed. July 7th.....Games, 8:30, Entertainment, after, NU SOUNDS
Thurs., July 8th....Open
Fri., July 9th....Open
Sat., July 10th...Dance: Music by the NU SOUNDS
Sun., July 11th...Open
Mon., July 12th...Open
Tues., July 13th...Open
Wed., July 14th...GAMES

O'BRIAN HALL

Wed., July 7th....Mixed Darts
Thurs., July 8th....Games Night
Fri., July 9th....Teen Dance, Knock out Darts (downstairs)
Sat., July 10th...Dancing to the Chevelles
Sun., July 11th...K of C Meeting. 8:00 p.m. Bar Closes. at 4:00 p.m.
Mon., July 12th...Open
Tues., July 13th...Movie
Wed., July 14th...Mixed Darts

ROYAL CANADIAN LEGION- 57 -WABUSH

Wed., July 7th....Movie: River of No Return
Thurs., July 8th....Open
Fri., July 9th....Open
Sat., July 10th...Danceing to the LABRADOR SHOWBAND
Sun., July 11th...Games
Mon., July 12th...Knock - out Darts
Tues., July 13th...Games and Entertainment by the LABRADOR SHOWBAND
Wed., July 14th...Movie: Garden of Evil

SIR WILFRED GRENFELL HOTEL

Wed., July 7th....Dick Nolan and Ben Weatherby (held over)
Thurs., July 8th....Dick Nolan and Ben Weatherby (held over)
Fri., July 9th....Movie: The Visit starring Anthony Quinn
Sat., July 10th...Dance
Sun., July 11th...Movie: The Secret Life of an American Wife
Mon., July 12th...Movie: Denver and Rio Grande
Tues., July 13th to 18th: BIG BAD JOHN & THE RHYTHM RIDERS
Adm: Tues., Wed. & Thurs. \$1.00 (Live Entertainment)
Fri., Sat., Sun. \$1.50 NIGHTLY 9 P. M.

JOHNSON'S INSURANCE AGENT

(other than life)

NEVILLE HAIRE

282-3031

282-3031

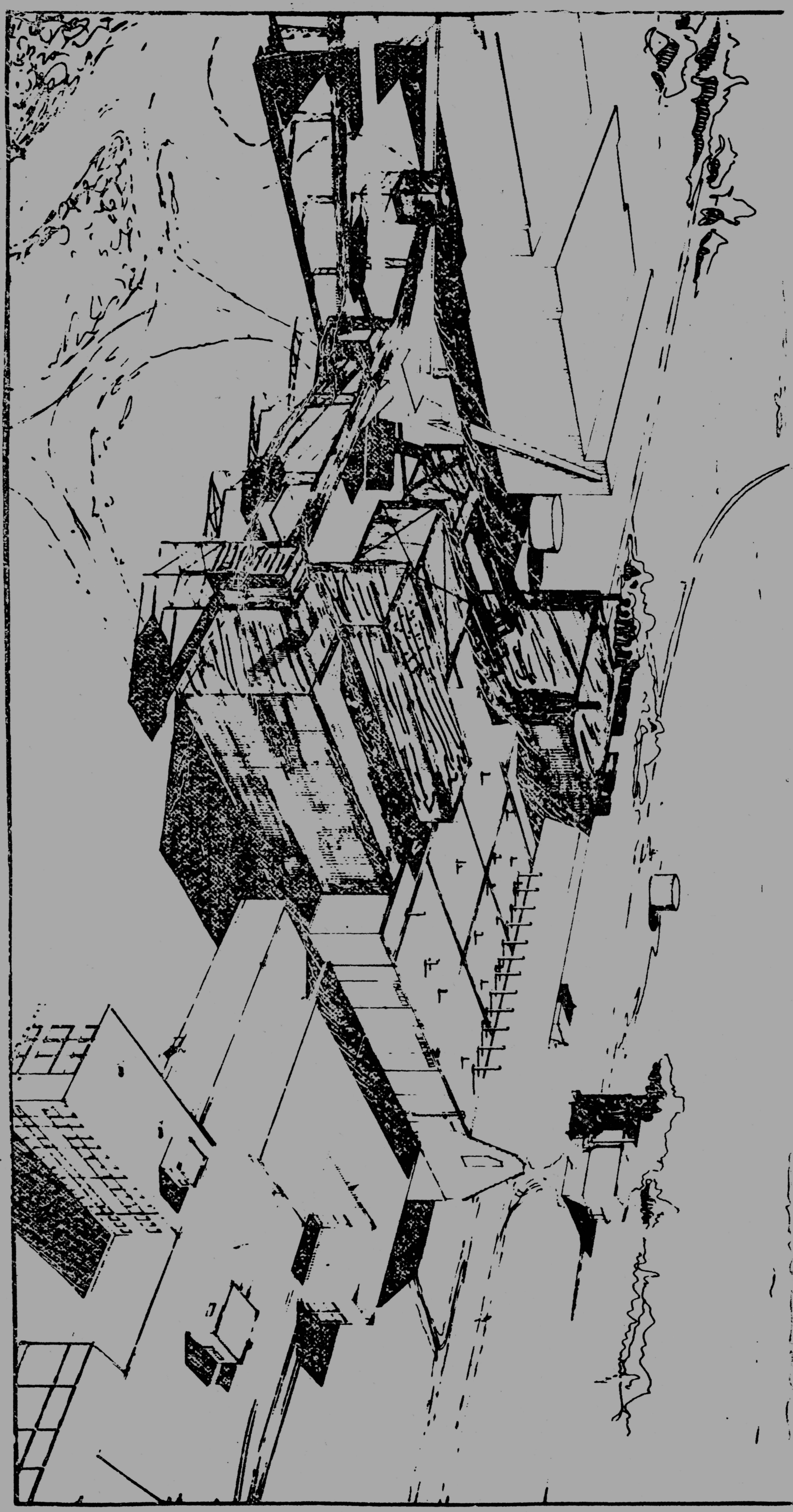
*** NOTICE ***

N.L.P. ELECTROLUX

DRAWING

POSTPONED until JULY 15th, 1971

IRON ORE COMPANY OF CANADA -- CAROL CONCENTRATOR EXPANSION



ANNOUNCEMENT ----- Mr. & Mrs N. Peckham, Elizabeth Ave., Labrador City are pleased to announce the engagement of their daughter, Norma Catherine to William Baxter Hunter, son of Mr. & Mrs. William Hunter of East Port, Bonavista Bay, Nfld. Wedding to take place on Decembe 18th, 1971.

----- New Arrival in Town-- To Mr. & Mrs George Legge. A boy, on June 28th, 8lbs/13 $\frac{1}{2}$ oz.

To Mr & Mrs John McCarthy
A girl, on July 5th, thier first.

LOST ----- Between Marconi Ave. and R.C. Church, Ladies Timex Electric Watch (Gold) REWARD OFFERED
Phone: 944-2987

AVAILABLE -----
ACCOMODATIONS__ For one male roomer Phone: 944-5672

APARTMENT FOR RENT: Unfurnished, preferred with no children or just one.
610 Carol Drive Phone: 944-2023

SERVICES ----- One teenage girl willing to baby sit and do light housework, during weekdays for the remainder of the summer months.
Phone: 944-5972

Man available to do carpenter work, after 5 P.M. and on Sundays.
Phone: 944-3380

Lady available for parttime housework
Phone: 944-5524

FOUND ----- On Birch Street, one pair Child's Prescription Glasses
Phone: 944-2571

FOR SALE ----- One Large Baby's Crib, with Mattress, excellent Condition.
One 4 piece Snack Tray Set (\$2.00)
Phone: 944-3309

One "Argus Movie Projector (Cheap)
One French Course w/ Records (was \$305.00- going for low price)
One Gendron Carriage (Excellent Condition)
Phone; 944-5446

WANTED TO BUY --- One Double Stroller, in good condition.
Phone: 944-5446
One Wringer Washer, in good condition
Phone: 944-2562 (after 6)

NOTES AND COMMENTS

Hudson Bay which took over from Bowrings state that they shall remain closed on Mondays, thus giving the employees the benefit of a two day week-end; under the present six day system, operated by most of the stores employees must work staggered shifts, and the stores are short of stsff three days.

Mr. Randell, Town Manager, reports that during the past week, the town has had to replace six lengths of pipe along the fire protection water line, and that it looked as if these sections were cut with a heavy blow from an axe. He reminds residents of Labrador City of the great fire thread we had last year and this water line is for their protection. The line is costly to maintain, but worse when it is attack by vandalism.

Mr. Randell also reported vandalism at Duley Lake, seems several picnic benches were smashed and one was even thrown into the lake.

NOTICE::: Tickets available on \$1,000.00 Bill, at R.C.L. Br. #47

The Legion Again

Dear Friends;

Again a meeting of the ways and means committee was held and the following items were discussed at the normal high level of intelligence that distinguishes this group.

Comrade Sick and Visiting reported that none of our comrades have been reported ill, at least none have taken up residence at the Capt. Jackman.

Comrade House and Bar reports that all is going well with the bar, little or no trouble. He further reports that he saw Comrade Treasurer smile (a mystery). He further claims that the only good idea that this comrade ever had was buying a cow. It seems that the boys are on a health kick and are drinking a lot of milk lately. At this point Comrade Manager interjected, claiming that looking after the comrades and listening to their fabrications was enough for him and that he did not intend to take on the care and maintenance of a cow. After a brief discussion the matter of the cow was held in obyance.

Comrade Building Committee reported that the work on the Legioner's Room is progressing and should be completed by Convention time. He and Comrade President got into a huddle and discussed the "Girl Guide Mother and Daughter Supper", that they attended. How those two managed to attend that, we sure don't know, they sure don't look like mothers to me.

Comradess Ladies Auxilary before she left to make the biscuits for our tea, informed us that the Ladies intend to furnish our Legioner's Room. (mystery solved). God bless our Ladies.

Comrade Poppy Fund reported that the "Forget Me Nots" were on sale and he informed us that this would be the last year that they are on sale. These pretty little flowers are to remind us of the sacrifice that the boys from Newfoundland made in World War 1, when the Newfoundland Regiment was wiped out almost to the last man at the battle of Beaumont Hammel. A sad thing to see the last of this remembrance emblem.

At this point Comrade Membership tearfully informed us that the tea was ready. Membership is not improving as well as it might.

Remember the next time you see a man with a Legion Pin in his lapel remember that he holds you in great regard.

Truly Yours

Pat Hogan

P.R.O. Branch # 47

ROYAL CANADIAN LEGION BRANCH 57

MAMOTH DRAW

\$20,000.00

1st PRIZE
LAST TICKET
DRAWN

1971 CHRYSLER NEW YORKER

2nd PRIZE
1/2 TICKETS DRAWN

& 22 FT. TRAVEL TRAILER

MINK COAT OR \$5000.00

3rd PRIZE (1/4 TICKETS DRAWN)

\$100.00 EVERY 50th TICKET

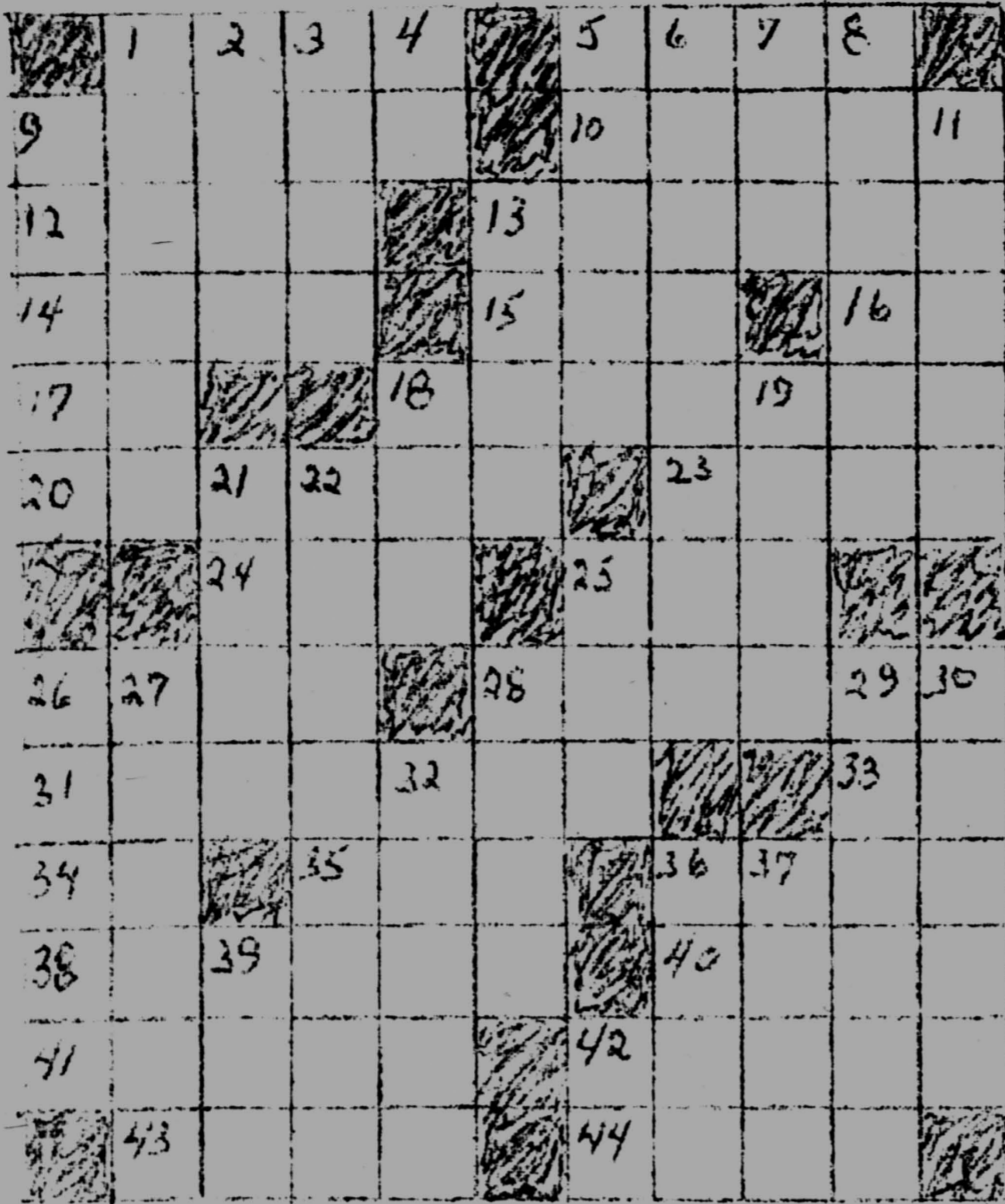
DRAWING DATE:

JULY 30th

WEEKLY CROSSWORD PUZZLE

PUZZLE #25

CLUES for #25



ACROSS

1. Approach
5. Mark of a wound
9. One who stands by himself
10. Resident of Lublin
12. Peruvian Indian
13. Legislative body
14. Christmas song
15. Finish
16. Rough lava
17. Liquid measure: abbr.
18. Torment
20. Hateful
23. Mountain: Latin
24. Children's game
25. Chemical suffix
26. Let it stand
28. Take the plug out
31. Body
33. Sun god
34. Hesitation syllable
35. Land measure
36. Rolls of money
38. Spoke
40. Incite
41. Glaze
42. Soothe
43. Comfort
44. Dance

DOWN

1. Cone-shaped
2. At one time
3. Repast
4. See 34 across
5. Exhaust
6. Dooms
7. Wing
8. Keep
9. Cant
11. Aquatic mammals
13. Observes
18. Insect
19. Netherlands measure
21. Roman road
22. Cereal goodies
25. Half ems
26. Rabbits' tails
27. A Mexican food
28. Employed
29. trial
30. Doughy
32. Rugged mountain crest
36. Mark on skin from whip
37. Dexterous
39. Marshy meadow
42. argent: sym.

ANSWER to # 24

* * T I C * A U K * *
 T A R D O * S T A N S
 O C E A N * S A M O A
 S H A S T A * H A U L
 S E T * E N G * * G O
 * * * O N T A R I A N
 S P U R T * L E F T S
 C O N C E A L S * * *
 A T * * D U E * A L B
 L A S T * G R A V E L
 E T H E R * I R E N E
 D O I L Y * E G R E T
 * * M A E * S O S * *

NATS COLUMN

Hi Folks;

Minor Softball in full swing. There are games every night, (weather permitting), the young one have lots of enthusiasm and put great effort into the game, but one cannot help wonder if they might just put a little more drive if their parents were there as spectators. It is pityful to note the lack of spectators at the field to cheer the boys on. Come on, or are you too tied up with yourself to give some time to your child.

A lot of people complain about the cool temperatures we've been having lately, now isn't it better than sweltering in the heat, and think of the money you save by not having to put your winter clothing in cold storage.

Noted that the traffic lights are operating from nine o'clock in the morning till six in the evening, but have also noted the motorist stop too close to the crosswalks to view the lights while sitting comfortably behind the wheel.

That's all folks, as the call of the bush is drumming in my ears. See you next week.

Love,
NATS.

NOTICE

U.S.W.A. LOCAL 5795

GENERAL MEMBERSHIP MEETING

R. C. CHURCH BASEMENT

WEDNESDAY, JULY 14th, 1971

7:30 P. M.

ALL MEMBERS ARE URGED TO ATTEND.

WIN
CA\$H\$
\$

Softball Summer

WIN
PRIZES

FAIR

COME ONE
COME ALL

SUNDAY
JULY 11, 1976

CROWN & ANCHOR

CA\$H WHEELS

FISH POND

CANTEEN SERVICE

AT THE BALL FIELD
(WEATHER PERMITTING
OR
THE ARENA

SPONSORED BY
LABRADOR CITY SENIOR
SOFTBALL LEAGUE

POSTAL RATES FOR DELIVERY IN CANADA

First Class

UP TO 1 LB.

WEIGHT STEPS		Effective 1 July 1971	Effective 1 January 1972
Over	Up To		
0 oz.	1 oz.	7¢	8¢
1 oz.	2 oz.	12¢	14¢
2 oz.	4 oz.	18¢	20¢
4 oz.	8 oz.	28¢	32¢
8 oz.	12 oz.	38¢	44¢
12 oz.	1 lb.	46¢	54¢

OVER 1 LB. (maximum 66 lb.) letter packets - Effective 1 July 1971

Letter Packet Zones:	OVER											Rate for each additional lb. over 12 lb. to 66 lb.
	1	2	3	4	5	6	7	8	9	10	11	
Atlantic (N.S., N.B., P.E.I., Nfld.)	lb.	lb.	lb.	lb.	lb.	lb.	lb.	lb.	lb.	lb.	lb.	
Quebec	lb.	lb.	lb.	lb.	lb.	lb.	lb.	lb.	lb.	lb.	lb.	
Ontario	to	to	to	to	to	to	to	to	to	to	to	
Manitoba & Sask.	2	3	4	5	6	7	8	9	10	11	12	
Alta., B.C., Yukon	lb.	lb.	lb.	lb.	lb.	lb.	lb.	lb.	lb.	lb.	lb.	
N.W.T.												
Within the same zone	.80	1.16	1.60	1.85	2.20	2.55	2.90	3.25	3.60	3.95	4.30	.35
To adjoining zone	.95	1.35	1.75	2.15	2.55	2.95	3.35	3.75	4.15	4.55	4.95	.40
To zone next to adjoining zone	1.25	1.85	2.45	3.05	3.65	4.25	4.85	5.45	6.05	6.65	7.25	.60
To zone third over from zone of posting	1.30	1.95	2.60	3.25	3.90	4.55	5.20	5.85	6.50	7.15	7.80	.65
To zone fourth over from zone of posting	1.40	2.10	2.80	3.50	4.20	4.90	5.60	6.30	7.00	7.70	8.40	.70
To and from N.W.T.	1.25	1.85	2.45	3.05	3.65	4.25	4.85	5.45	6.05	6.65	7.25	.60

Third Class

Effective 1 July 1971

Third class mail includes all mailable matter not over one pound in weight which does not require payment at the first class rates or is not acceptable at the second class rates.

Included are:

Books, newspapers and magazines mailed by public, catalogues, circulars, merchandise, etc. Christmas, Easter and other such greeting cards can be sent at the third class rate if they do not have more than five words of greeting added and are mailed in unsealed envelopes.

6¢ first 2 ounces

3¢ each additional 2 ounces or fraction of 2 ounces

Items exceeding the prescribed limits of size are subject to a surcharge of 75¢.

OVER 1 LB. (maximum 66 lb.) letter packets - Effective 1 January 1971

Letter Packet Zones:	OVER											Rate for each additional lb. over 12 lb. to 66 lb.
	1	2	3	4	5	6	7	8	9	10	11	
Atlantic (N.S., N.B., P.E.I., Nfld.)	lb.	lb.	lb.	lb.	lb.	lb.	lb.	lb.	lb.	lb.	lb.	
Quebec	lb.	lb.	lb.	lb.	lb.	lb.	lb.	lb.	lb.	lb.	lb.	
Ontario	to	to	to	to	to	to	to	to	to	to	to	
Manitoba & Sask.	2	3	4	5	6	7	8	9	10	11	12	
Alta., B.C., Yukon	lb.	lb.	lb.	lb.	lb.	lb.	lb.	lb.	lb.	lb.	lb.	
N.W.T.												
Within the same zone	.80	1.30	1.70	2.10	2.50	2.90	3.30	3.70	4.10	4.50	4.90	.40
To adjoining zone	1.05	1.50	1.95	2.40	2.85	3.30	3.75	4.20	4.65	5.10	5.55	.45
To zone next to adjoining zone	1.35	2.00	2.65	3.30	3.95	4.60	5.25	5.90	6.55	7.20	7.85	.65
To zone third over from zone of posting	1.40	2.10	2.80	3.50	4.20	4.90	5.60	6.30	7.00	7.70	8.40	.70
To zone fourth over from zone of posting	1.50	2.25	3.00	3.75	4.50	5.25	6.00	6.75	7.50	8.25	9.00	.75
To and from N.W.T.	1.35	2.00	2.65	3.30	3.95	4.60	5.25	5.90	6.55	7.20	7.85	.65

NOTE: Air transmission: All domestic first class mail not exceeding 66 pounds in weight or 3 feet in length, width or depth or a combined length and girth not exceeding 6 feet, is carried by air providing air transmission will expedite delivery. Domestic first class mail exceeding the above limits size and weighing not more than 66 lb. will receive surface transmission.

Fourth Class

FOURTH CLASS RATE ZONES	OVER															
	1	2	3	4	5	6	7	8	9	10	11	12	13	14	15	20
Atlantic (N.S., N.B., P.E.I., Nfld.)	lb.	lb.	lb.	lb.	lb.	lb.	lb.	lb.	lb.	lb.	lb.	lb.	lb.	lb.	lb.	lb.
Quebec	to	to	to	to	to	to	to	to	to	to	to	to	to	to	to	to
Ontario	2	3	4	5	6	7	8	9	10	11	12	13	14	15	20	25
Man. and Sask.	lb.	lb.	lb.	lb.	lb.	lb.	lb.	lb.	lb.	lb.	lb.	lb.	lb.	lb.	lb.	lb.
Alta., B.C., Yukon																
Northwest Territories																
At Any Post Office in the same Zone (Except Northwest Territories)	.45	.65	.75	.85	.95	1.05	1.15	1.25	1.35	1.50	1.65	1.80	1.95	2.10	2.30	2.55
From any Post Office in any Zone to any Post Office in the immediately Adjoining Zone (Except Northwest Territories)	.50	.70	.80	.90	1.05	1.15	1.25	1.35	1.45	1.65	1.80	1.95	2.10	2.25	2.50	2.80
TO OR FROM ANY P.O. IN																
Atlantic																
Quebec																
Ontario																
Man. and Sask.																
Alta., B.C. and Yukon																
Atlantic	.55	.75	.85	.95	1.15	1.25	1.35	1.45	1.65	1.80	1.95	2.10	2.25	2.40	2.70	3.05
Quebec																
Man. and Sask.																
Alta., B.C., Yukon																
Atlantic	.60	.80	.90	1.00	1.25	1.35	1.45	1.55	1.65	1.95	2.10	2.25	2.40	2.55	2.90	3.30
Quebec																
Man. and Sask.																
Alta., B.C., Yukon																
Atlantic	.65	.85	.95	1.05	1.35	1.45	1.55	1.65	1.75	2.10	2.25	2.40	2.55	2.70	3.10	3.55
Quebec																
Man. and Sask.																
Alta., B.C., Yukon																
TO OR FROM ANY P.O. IN																
Any Zone	.50	.70	.90	1.20	1.50	1.80	2.10	2.50	2.90	3.30	3.70	4.10	4.50			
Northwest Territories																
Northwest Territories																
Northwest Territories																

NOTE:

- Parcels weighing up to and including 16 ounces are subject to postage at the rate of 6¢ for the first 2 ounces or fraction thereof and 3¢ for each additional two ounces or fraction thereof.
- Weight limit - 2 lbs.
- The above rates apply to parcels not exceeding 3 feet in length, width or depth with a combined length and girth not exceeding 6 feet. Parcels exceeding these dimensions are accepted providing no one dimension exceeds 6 feet and the combined length and girth does not exceed 10 feet, subject to a surcharge of 75¢.

REGISTRATION FEES

Fees	Limit of indemnity
50¢	\$50.00
75¢	\$100.00
\$1.10	\$200.00

Acknowledgement of Receipt Card -

At time of mailing 15¢ each

Subsequent to mailing 25¢ each

INSURANCE FEES

(Third and Fourth Class mail only)

Insurance up to \$10.00	10¢
Insurance over \$10.00 to \$50.00	20¢
Insurance over \$50.00 to \$100.00	30¢
Insurance over \$100.00 to \$200.00	50¢

SPECIAL DELIVERY FEES

First Class Mail	40¢
Third and Fourth Class Mail	50¢

C.O.D. FEES

(Fees in addition to ordinary postage)

Amount to be collected, or indemnity desired, whichever is greater.

Up to \$10.50	50¢
Over \$10.50 to \$100.00	\$1.00
Over \$100.00 to \$200.00	\$1.50

The single C.O.D. service charge covers all aspects of C.O.D. transactions. Collection, Remittance, Indemnity, C.O.D. service may be accorded all classes of mail.

MONEY ORDER FEES

From \$0.01 to \$200.00 25¢

STRAIGHT
FROM THE
HORSES'
MOUTH



**Carol-
Wabush
Co-op
official
Opening
Wed.
July
14th**



**Dr. M.A.Pellerin
Veterinarian**

**will be having an
animal clinic
July 24th—25th.**

**at 627 Hudson Drive Labrador City
for an appointment please call**

944-5621.

**REQUIRED IMMEDIATELY
STENOGRAPHER**

**For R.C.M.P. Office
Labrador City**

Please address application to :

**Mr. A.J. Rendell
Town Manager**

P.O. Box, 288 . Labrador City, Nfld.

AYRE'S

WABUSH
PLAZA

LABRADOR WEST'S FAVORITE STORE

FOR ALL YOUR HOUSEHOLD NEEDS
SHOP AT AYRE'S

TAKE ADVANTAGE OF THESE SPECIALS DURING THEIR HOUSEWARE SALE

FLOWER VASES, clear Glass, Designed Edge:
Regular Price: 45¢

SALE PRICE: 15¢

TIE RACKS, Holds ten Ties

Regular Price: \$1.69

SALE PRICE: 85¢

Assorted DRINKING GLASSES

Regular Price: 20¢ to 75¢

SALE PRICE: 10¢ to 38¢

CUPS and SAUCERS ---Regular Price: 33¢ to \$1.19

SALE PRICE: 17¢ to 60¢

CREAM DISHES -----Regular Price: 66¢

SALE PRICE: 25¢

SUGAR BOWLS -----Regular Price: \$2.65

SALE PRICE: \$1.33

PLASTIC TRAYS -----Regular Price: 88¢

SALE PRICE: 44¢

PLASTIC BOWLS -----Regular Price: \$1.67

SALE PRICE: 84¢

20 Gal. TRASH CANS -----SPECIAL: \$3.97

CANNISTER SETS, (assorted Colours, 5 pcs) SPECIAL: \$3.97

SIT-ON HAMPER -----SPECIAL: \$3.97

8 Pc. TUMBLER SET (H1 Ball) -----SPECIAL: \$2.97

5 Pc. CHIP & DIP SET -----SPECIAL: \$1.88

PYREX COFFEE SAVERS -----SPECIAL: \$2.97

STORE HOURS:

MON., TUES., WED., & SAT. : 9 A.M. - 6 P.M.

THURS., & FRI. : 9 A.M. - 9 P.M.