

**MERIT** INSURANCE COMPANY  
 All Canadian Coast to Coast  
 DEPENDABLE PROTECTION  
 • Complete Coverage  
 • Low Rates  
 • Fast Fair, Friendly Claim Service  
 Our Policy is your Protection  
 Labrador Representative  
**GORDON MANSTAN**  
 768 Stirling Crescent  
 944-3301

AR...  
 ST. JOHN'S, Nfld.  
 REFERENCE DIVISION

A  
U  
T  
O

F  
I  
R  
E

# The Aurora

The weekly newspaper of Labrador West

Vol. 3, No. 10

AURORA, LABRADOR, JUNE 2, 1971

PRICE 10 CENTS



**George Faulkner, addressing Minor Hockey's Annual Father & Son Banquet, Friday 21 May 1971.**



## Festival winning group has done it again

Members of the cast of "The Ghost Story" returned from Corner Brook Monday after another successful visit to the Corner Brook Players Annual Drama Festival of One-Act High-School Plays. After having won the Labrador City Collegiate Intramural Drama Festival here

some weeks ago, the production was taken under the direction of Diane Lalonde and assistance of Derek Evans to Corner Brook where it won honors and was judged Best Play in the three day festival. Adjudicator Clyde Rose also awarded the prize of Best

Actor in the festival to Bob Archer for his outstanding portrayal of George, the frustrated suitor. Special Applause went to Barbara Rose for her very real performance in the role of Anna, George's one-and-only love. The whole troupe

was strongly complimented for its resourcefulness, stage presence, and add-libbing during the party scene and especially when a false fire alarm sounded for several minutes during the presentation. The performance never skipped a beat. The troupe

included Bob Archer, Barbara Rose, Peter Burchert,, Elaine Little, Joanne Schumph, Jeanne Snell, Dawn Hopkins, John Kennedy, Joyce Butt, Steve Myers, Wendy Thoms, Ken Lander, Linda Batson, Harry Follett, Diane Lalonde, and Derek Evans.



# DOMINION DEEP DISCOUNT PRICES ...by the thousands!

## PRIX COUPÉS à Plein... par Milliers!

From California—Extra Choice

## ORANGES

Size 88's

# 10 / 98<sup>c</sup>

Oranges de Choix  
De la Californie—Sucrées-Juteuses  
Grosneur 88

From California-Canada No. 1-Size 24's

## ICEBERG LETTUCE

# 39<sup>c</sup>

ch. ea.

Laitue Iceberg-De Californie-Grosneur 24

Ontario-Canada No.1-Hot House  
**TOMATOES** lb **59<sup>c</sup>**  
Tomates Des Serres de L'Ontario

Prince Edward Island-Canada No.1  
**POTATOES** Sac 10 lb bag **82<sup>c</sup>**  
Pommes de Terre-De I.P.E.

Imported-Family Favourite!  
**BANANAS** lb **23<sup>c</sup>**  
Bananes Importees-Les Favorites!

Florida-Red Cutter-Refreshing  
**WATERMELONS** Demi-Half **98<sup>c</sup>**  
Melons D'Eau-De Floride-Chair Rouge

Ontario-Hot House-Canada No.1  
**CUCUMBERS** ch. ea. **25<sup>c</sup>**  
Concombres des Serres de L'Ontario

South Africa-Fancy-Granny Smith  
**APPLES** 6/78<sup>c</sup>  
Pommes Granny Smith-de Afrique du Sud

### QUALITY MEATS at DEEP DISCOUNT!

Canada Choice-Red Brand Beef-Government Inspected  
Boneless-Rolled-Country Club

**POT ROAST** tender-Juicy lb. **89<sup>c</sup>**  
ROTI Pot-au-Feu  
Roulé-Désossé-Country Club-Boeuf margue Rouge

Red Brand Beef-Back Strap Removed

**BLADE ROAST** tender-Juicy lb. **69<sup>c</sup>**  
ROTI DE PALETTE  
Boeuf de marque Rouge-Tendon Dorsal enlevé

Red Brand Beef-Easy to Carve!

**PRIME RIB ROAST** lb. **\$ 1.39**  
Rôti de Côtes de Choix-Facile à Trancher!

Fresh Ground Hourly!

**FRESH HAMBURGER** lb **63<sup>c</sup>**  
Hamburg Frais Haché chaque Heure!

Frozen-Chicken

**LEGS or BREASTS** Box 2½lb. **\$ 1.39**  
Cuisses ou Poitrines de Poulet-Congelées

Maple Leaf Brand (Loose)

**Breakfast Sausages** lb **59<sup>c</sup>**  
Saucisses à déjeuner-Maple Leaf

Jubilee Brand

**RINDLESS BACON** Pqt. 1lb. Pkg. **56<sup>c</sup>**  
Bacon Sans Couenne-Marque Jubilee

Maple Leaf-Wax

**BOLOGNA** by the piece lb. **53<sup>c</sup>**  
Bologne en Morceau-Maple Leaf

Prix coupés à Plein sur les VIANDES DE QUALITÉ

#### X-TRA DISCOUNT

Avon  
**BAKED BEANS**  
Bte 19oz. Tin

**22<sup>c</sup>**  
FEVES CUITES  
Avon

#### SUPER-AUBAINE

#### X-TRA DISCOUNT

Catelli-Uncooked  
**SPAGHETTINI**  
2 Pqts. 16oz. Pkgs.

**49<sup>c</sup>**  
SPAGHETTINI  
Catelli

#### SUPER-AUBAINE

#### X-TRA DISCOUNT

Catelli Spaghetti  
**MEAT SAUCE**  
Bet 14 oz. tin

**38<sup>c</sup>**  
SAUCE A LA VIANDE  
Catelli

#### SUPER-AUBAINE

#### X-TRA DISCOUNT

Domino Liquid  
**DETERGENT**  
Cont. 64 oz.

**99<sup>c</sup>**  
DETERSIF Domino  
Liquide

#### SUPER-AUBAINE

#### X-TRA DISCOUNT

Duncan Hines  
**CAKE MIXES**  
Pqt. 19oz. Pkg

**45<sup>c</sup>**  
MELANGES à Gâteaux  
Duncan Hines

#### SUPER-AUBAINE

#### X-TRA DISCOUNT

Grand Prix  
**SOFT DRINKS**  
3 Btes 10oz. tins

**29<sup>c</sup>**  
BREUVAGES  
Grand Prix

#### SUPER-AUBAINE

#### X-TRA DISCOUNT

Domino  
**PEANUT BUTTER**  
Ice Box Jar

**53<sup>c</sup>**  
Pot 16oz.  
BEURRE D'ARACHIDES  
Domino

#### SUPER-AUBAINE

#### X-TRA DISCOUNT

Raymond  
**STRAWBERRY JAM**  
Pot 24 oz. Jar

**88<sup>c</sup>**  
CONFITURE de FRAISES  
Raymond

#### SUPER-AUBAINE

# On the local scene

**COUNTERFEIT:** According to the local R.C.M.P. detachments, there have been a number of counterfeit bills passed in our area; the latest being Ten's (\$10.00) with a brownish tint, bearing Serial No. M - T 0491411. Local residents, especially those in banks or the retail trade, are asked to inform authorities if any such notes are seen in Labrador City-Wabush.

**T.V.:** According to C.J.C.L.-T.V., transmission problems of late have been caused by a malfunction in the re-recording apparatus of C.B.N. St. John's. The problem has been rectified but trouble may be experienced locally for the next few days.

**LAW:** Recently there has been a rash of Impaired and Dangerous driving charges laid by our law enforcement officers. Within less than a month, (7) residents have been convicted of impaired driving and a further (25) of speeding or dangerous driving. Drivers are advised that on conviction, these are Federal offences' and are reported throughout the country.

**UNEMPLOYMENT:** In conversation with Mr. Bown of the local Manpower Office, Aurora learned the number of persons in Labrador City-Wabush registered with Canada Manpower was fairly high and unfortunately was growing. Two of the major contributing factors was the large influx of men, (especially from Northern Nfld.) arriving here, strictly on speculation, without jobs and in the majority of cases, with very little chance of obtaining employment. The second problem revolves around local residents encouraging unemployed relatives and friends to come here, stay with them and seek employment. We were told by Manpower that on I.O.C. expansion work, "Bonafide" residents of Labrador had first opportunity on job openings and

it would be advisable to check with Canada Manpower before bringing friends or relatives here to seek work.

As may be obvious to many people, there are a large number of "floaters" in the area, especially in Labrador City. However we were really surprised to learn there are unemployed here for periods of up to two months without any visible means of support and without living accommodations.

It is our intent, this month, to do a story on employment and the work of Canada Manpower in this area.

**LABOR:** We were recently advised by Mr. Tom Riggs, Northern Vice-President, Nfld. Federation of Labor that two points directly affecting this area, were included in the annual brief presented by the Federation to Provincial Government. In condensed form, as follows:

(A): Pollution. The operations of Iron Ore Co. of Canada and Wabush Mines have resulted in pollution of Wabush Lake and Flora Lake, and expanded production, without new safeguards, will be followed by pollution of all lakes and rivers in the immediate area of Labrador City-Wabush. The Federation urged the Provincial Government to take a serious look at this matter and, within a timetable, order the mining companies to clean up and repair the damage caused our natural resources, especially to sports fishing. Further to establish operational guidelines to ensure no repetition in the future.

(B): Eastern Provincial Airways. Air fares charged by this airline to and from Wabush Airport are the highest, cost per mile, of any scheduled route in this country. Where the airline has to compete with Air Canada, rates are comparable and within reason. In that the Newfoundland people, through their Provincial Government, have a large investment in this airline, the Federation's brief requests rates be reduced to comparable charges, where Air Canada and E.P.A. run parallel routes.

**VISITORS:** Last week-end Steve Neary, Minister of Social Services & Rehabilitation and Acting Minister of Labor, visited the area to address the graduating apprenticeship class of Wabush Mines. Another visitor was Mr. Ron Dunphy, a former prominent businessman of Wabush. Just before Aurora deadline, we understand Premier J. R. Smallwood was due to arrive at Wabush Airport, 16:00 Saturday 29 May. At the time, we were unable to find out the object of his visit.

### MIND TEASER

A bug, starting from one bottom corner of a cube measuring 4 feet on each edge, can crawl around all four sides on the base in 4 minutes. What would be the bug's shortest route from that bottom corner of the cube to the diagonally opposite upper corner and how long would it take the bug to travel that route?

#### ANSWER

8.944 (plus) feet in 2.236 minutes. He travels diagonally to the center of the nearest top edge, thence diagonally to the opposite upper corner. And the squares of 4 and 2; extract square root; multiply this result by 2 for the distance traveled; divide by 4 for the bug's time.



**Bud Bragg (right) Provincial President, during presentation of Trophies following the Dominion Darts Dinner.**

## Church Calendar

**ST. PAUL'S  
LABRADOR CITY**

June 6, 10:00 a.m. Holy Eucharist.  
Trinity, 7:15 p.m. Evening Prayer.  
Sunday, 8:15 p.m. Vestry Meeting.

**ST. PETER'S  
WABUSH**

8:00 a.m. Holy Communion.  
11:30 a.m. Holy Eucharist.  
11:20 a.m. Sunday School.

**CAROL UNITED CHURCH  
Rev. Wm. Mayberry**

10:30 a.m. Sunday School (Kind. Prim. Inter.)  
11:30 a.m. Morning Worship.  
11:30 a.m. Nursery and Junior.

**SALVATION ARMY  
CITADEL  
Lieut. R. Bungay**

11:30 a.m. Holiness Meeting.  
2:30 p.m. Sunday School.  
7:30 p.m. Evangelistic Service. Nursery During 11:00 service.  
Monday, 6:30 p.m., Band practice Y.P.  
Wed. 7:30 p.m. Corpscadets.

Thurs. 7:30 p.m. Band practice.  
8:00 p.m. Home League.  
Sat. 7:00 p.m. Youth Group.

**CHRIST CHURCH (WABUSH)  
Rev. J. B. Dickey**  
9:45 a.m. Church School.  
11:00 a.m. Morning Worship.  
Nursery Held during Worship.

**OUR LADY OF  
PERPETUAL HELP  
Rev. F. Lemire, Rev. J.  
Laperriere, O.M.L.**

7:00 p.m. Mass Sat. Evening.  
9:00 a.m. Mass.  
11:00 a.m. Mass.  
7:00 p.m. Mass (French)  
Weekday Masses 7:00 p.m.

**OUR LADY OF ASSUMPTION  
(WABUSH)  
Rev. Jos. Blouin, O.J.I.**

10:00 a.m. Mass.  
7:00 p.m. Mass.  
Weekday Masses 5:00 p.m.

**PENTECOSTAL CHURCH  
GLAD TIDINGS  
Pastor Gillett**

11 a.m. Morning Worship.  
3:00 p.m. Sunday School (All Ages)  
7:00 p.m. Evangelistic Service.  
Tues. 8:00 p.m. Prayer Meeting.  
Wed. 7:30 p.m. Choir Practice.  
Thurs. Young People's Meeting 8:00.



**SEE FOR YOURSELF**

**IF YOUR CAR WHEELS NEED ALIGNING**

Visualiner scientific "beam of light" aligning enables you to check your car wheel alignment with the mechanic. Corrections are made faster.

come in for a **VISUALINER** check-up

**CAMPBELL'S SERVICE** 

"Where the Customer Counts" 944-2673

**NEED STATIONERY ?  
OFFICE EQUIPMENT ?  
...OR MACHINES ?  
...PERHAPS SOME PRINTING ?**

We're as close as your 

**AND LIKE „AVIS,, WE'RE TRYING HARDER  
...TO GIVE ONE DAY SERVICE TO OUR  
TWIN CITY CUSTOMERS**

We have \$100,000.00 of stationery stock in our warehouse at all times (and that's a lot of pads and pencils)

**TRY OUR 7-DAY PRINTING SERVICE TOO!**

 **Sentinel Press Limited**

367 Laure Ave.  
Sept-Iles, Que.

# The Aurora

Published every Wednesday at Labrador West, Newfoundland and Labrador and printed by Robinson-Blackmore Printing and Publishing Limited, O'Leary Avenue, St. John's, Newfoundland. Subscription rate Canada and Foreign \$6.50. Mailing address, P.O. Box 2090, Labrador City.

## Editorially Speaking

We came across the following, in The Los Angeles Times, from a monthly publication of the First National Bank. It is rather lengthy so we will spread over two issues. Next week we insert the "Worksheet." HOW MUCH ARE YOU WORTH? If you're like most people, you probably don't know. And with your Income Tax cleared up for another year (in most cases); what better time to sit down and figure out — professionally—just how much money you owe and how much you own.

That's the advice from First National City Bank in its current issue of consumer views. "Right now you have your personal financial figures fresh in mind, your important papers gathered and close at hand;" and excellent time, in other words, to calculate your personal net worth.

Why should you want to know what you're worth? On a general level, it's merely sound money management, says the bank. But it's also the only way to know whether you're growing or shrinking each year. A clear financial autobiography will emerge letting you see whether you're saving or why you aren't.

### BALANCE SHEET

The way you find out what you're worth is the way most corporations find out what they're worth. You draw up a personal balance sheet, an adaptation of a corporate balance sheet in which a business analyzes its assets and liabilities to find out where it stands.

Says First National: "Most consumers are unfamiliar with this technique, but like an X-ray, it passes through the surface activities of getting and spending money, and reveals your essential financial structure at a point in time."

The bank adds: "An easy way to describe how it works is to say that it adds up what you own and subtracts what you owe. The difference between Own and Owe is your personal net worth at a particular moment."

According to the bank, some of these assets will be "liquid" and others will be "fixed." The difference between these types of assets is that liquid assets can be quickly converted into cash; fixed assets, such as your home, may require considerable time and effort to convert into cash.

Here are some things to keep in mind:

Don't forget about the values you may have in company fringe benefit plans, if there are definitely assigned to you ("vested") and no longer contingent upon future employment.

The cash value of your car declines as you use it. You can predict its value fairly accurately from the trade-in schedules used by car dealers.

Such assets as home furnishings and clothes depreciate quickly and have a surprisingly low quick-sale value compared with their original cost.

### HOUSE VALUE

The equity in your home generally increases in value at a predictable rate in two ways. For one, although the amount of your mortgage payment remains constant, your equity goes up as you steadily reduce the principal. Most statements from mortgage lenders show the principal remaining to be paid. Also, your equity rises with the increased market value of your home. You can judge that simply by keeping up with news about comparable home prices in your area.

More difficult to figure is the value of antiques, paintings and stamp and coin collections. If you take the trouble to have these appraised once, you can probably estimate their changing market value over the years without too much trouble. Some can enjoy a sudden popularity and skyrocket in value.

In the Owe column, First National suggests you list all items on which you owe money and these might include: Auto loans outstanding, unpaid mortgage debt, medical bills, bills due on charge accounts, instalment debts, personal debts, tax liabilities, current insurance premiums due, other loans.

### HOW FAST?

After you've determined what you're worth, the question rises — how fast should personal net worth increase?

The bank says there is no pat answer, no single rule. But they note that financial experts advise trying to save from six to 10 per cent of take-home income each year.

## Here and There

**PUT TO THE TEST:** Annemairie Mann, 22 won first prize at Munich carnival ball for the miniest of shorts, but refused to call them hotpants "because they're made of asbestos." Unfortunately, a cynical male put a match to them, and they began smoking. Her partner's maxi-jacket saved her from burns and embarrassment, but Miss Mann wants her money back from the boutique that sells the shorts.

### THROWING STONES AT GLASS HOUSES:

People who live in glass houses can start throwing stones. Canadian General Electric Co., recently opened a \$500,000 plant at Port Union, Ont., to product Lexan polycarbonate sheet, said to be 250 times as impact-resistant as safety glass and 20 times more so than other transparent plastic sheeting. C.G.E. hopes to see its new product used as a substitute for conventional window glass, and in automobiles, as corrosion-proof rocker panels, tinted roof bubbles and interior lamp lenses and reflectors.

### NFLD. VEHICLE REGISTRATIONS UP:

Motor vehicle registrations in this Province are now well past the 100,000 mark. According to figures released last month by the Motor Registration Division, approximately 103,000 vehicles of all classes have been registered for 1971. For the same period last year, the figure for all

vehicles was 90,500. A breakdown of these figures shows 73,400 cars, 16,200 trucks and 900 "other vehicles" such as trailers, motor cycles, buses were registered. According to the latest figures over 77,000 passenger cars were registered, which is a record. Statistics from the Dominion Bureau of Statistics show that for last year Newfoundland motor registration figures jumped 12 per cent as compared with the national average of 2.0 per cent. Surprisingly, British Columbia, Nova Scotia and Saskatchewan had a decrease in registration. That Newfoundland's motor registration should be so far above the national average is another bit of irony in view of the fact that this province has the lowest national income and we pay the highest prices for gasoline, which includes the highest provincial tax in Canada.

### GETS EYE STRAIN, TOO:

Harold Sullivan of Southend, England, wants his rent reduced because his privacy has been invaded with the building of new apartment houses next door. "When I look out of my window I can see Ladies stripping to the waist," he reported. "And if I can see them, they can see me." Sullivan, who used to sleep in the raw, has had to buy pajamas since the new tenants move in.

### CHANGES SOUGHT IN LIQUOR LAWS:

The Saskatchewan Hotel

Association said recently that it intends to ask for changes, in a brief to the legislative committee studying the province's liquor laws. The group wants liquor made available in beverage room, drinking on-Sundays, dancing in beverage rooms and the opening of all liquor outlets on election days.

### LEASING:

A new Ontario firm is looking for people who don't necessarily want to own cottages, power boats and other such big-ticket recreational items, but want to behave as though they do. It's an outfit called Leisure Time Centre, which is simply projecting the old rent-all trend into its logical extension: leasing. If you fancy watercraft, for instance you can lease a glass-fibre canoe for a year, for \$2.93 a month, or a 15 foot runabout for three years, for \$39.00 a month.

That second example may sound like a high rent item when you consider you're paying that rate summer and winter, but after your three-year lease is up, you can buy the boat for \$1.00. Not satisfied with getting a man all leased up for years with a yacht he can't afford Leisure Time wants wives to come out and browse too: it has equipped its new Toronto suburban showroom with a mod boutique stocked with swimsuits and lingerie.

## Wallpaper remnants create designer kitchen

Irregularly shaped remnants, or part rolls of wallpaper left over from a recently remodeled kitchen or dining area provide you with a golden opportunity to put your creative talents to work.

Since vinyl coated wallpaper is scrubbable, those left overs can be put to practical use recovering cannisters, breadbox, recipe containers, etc. The same adhesive you used for the walls will serve this purpose as well, and a light sanding or application of an undercoat on glossy surfaces will further strengthen the bond.

A cherry and useful "notice board" can be fashioned by applying strips of vinyl paper and a square of felt, color-keyed to the wallpaper, to a piece of stiff cardboard.

The wall is strippable as well as scrubbable. To change your decor, merely life one corner of the vinyl and peel it off!

You'll be surprised at how far the "odds and ends" can stretch with a little ingenuity, and how easily you can create a designer effect in your kitchen.

# Roaming the Globe

## MAKING A LIST SMOOTHS THE WAY:

The most important part of a car trip comes before it begins—the planning. When you know where you want to go, your local motor league, or the big oil companies, can map out the way to get there, and can also tell of interesting things to see and do along the way. Write to government tourist bureaus, and to chambers of commerce in individual cities. They will be happy to send information on special attractions and events in their particular areas. You will find addresses of U.S. government bureaus in road guides; a letter simply sent to the chamber of commerce in any city you plan to visit will find its way.

In Canada, addresses are: Newfoundland and Labrador Tourist Development Office, Confederation Bldg., St. John's Nfld.; Dept. of Tourist Development, Prince Edward Island Travel Bureau, Charlottetown; Nova Scotia Travel Bureau, 5670 Spring Garden Road, Halifax New Brunswick, Dept. of Natural Resources, Travel and Tourist Development Branch, 796 Queen St., P.O. Box 1030, Fredericton; Quebec Dept. of Tourism 930 St. Foy Rd., Quebec City; Ontario Dept. of Tourism and Information, 185 Bloor St. E., Toronto, 5; Manitoba Dept. of Tourism and Recreation, 408 Norway Bldg., 401 York Ave., Winnipeg 1; Saskatchewan Tourist Development Branch, Power Bldg.,

Regina; Alberta Government Travel Bureau, 1629 Centennial Bldg., Edmonton 15; B.C. Dept of Travel Industry, Victoria; Yukon Dept of Travel and Information, P.O. Box 2703, Whitehorse, Travelarctic Tourist Development Section, Yellowknife, N.W.T.

Letters usually reap plenty of pamphlets and information, both general and specific, on accommodations and their cost, restaurants, history, local fairs and other subjects.

In planning, lists are invaluable. Write down everything you plan to take and mark off the items as you pack. Sun glasses, aspirin, tissues, notebook and pencil, sewing kit, a small bottle of cleaning fluid, paper towels, a flashlight, suntan lotion, road maps and tour books, a small first aid kit—all can go into the glove compartment. Cameras and film cannot; the heat may ruin both. There is another kind of useful list—things to be done before leaving home. Have the car checked to ensure it is in good condition. Stop the newspaper and clean out the refrigerator. Pay the rent if it will be due while you are away.

If not tied too tightly to school vacation time, plan a trip before or just after the peak season—which varies with destination. Off-season travel has the advantages of uncrowded roads and accommodation where rates may be cut by as much as half. It helps to start out early

in the morning. This is the nicest time of the day for driving; the air is fresh, roads are almost traffic-free. Another advantage to starting early is that you can get planned mileage done in time to be choosy about a motel if you have no reservations. If you stay in motel chains, most will make reservations ahead if asked.

Costs of course vary with individuals, but experts say \$40.00 a day is plenty for a couple—\$14 for meals and snacks (except in big cities this is enough); \$14.00 for lodging, \$8.50 for gas and oil, \$3.50 for extras. Add a bit for admissions and amusements.

**AROUND AND ABOUT:** British West Indian Airways (BWIA) has a 64-page brochure, Unheard-of places for Unheard of Prices, featuring off-season package vacations on the nine Caribbean islands served by the airline, or by Leeward Islands Air Transport (LIAT). The islands are Antigua, Montserrat, Cominica, St. Lucia, Barbados, Grenada, St. Vincent, Trinidad and Tobago.

**AIR WAVES:** Japan Air Lines offers, until Sept. 1971, a 21-day theatre tour, \$699.00 from New York. The tour includes six days in London, five days in Moscow, Leningrad, and Paris. The rate includes 13 visits to shows, air fare, hotels, breakfasts in London and Paris, three meals a day and daily sightseeing in the U.S.S.R. An optional week-long extension to Japan is available.

Scandinavian Airlines System (SAS) has a block of 78 seats in the economy section of its Boeing 747-B planes reserved for non-smokers. The airline also has a no-smoking section on domestic Swedish routes.

Icelandic Airlines offers Scandinavia Bargains and More, threeweeks, \$409.00. This includes air fare from New York to Oslo, Gothenburg or Copenhagen, one night hotel accommodation, use of a car with unlimited mileage or unlimited first-class train travel for 21 days. There is a \$65.00 high season supplement, 1 June-31 Aug. 1971.

**MISCELLANEOUS:** The 1971 edition of the Guide to New York State Hotels, Motels and Resorts is available free from travel agents or direct from the New York State Hotel and Motel Association, 141 West 51st St., New York, N.Y. 10019. The guide lists more than 500 members of the Association with 95,073 rooms and rates.

The Edinburgh Festival will celebrate its 25th anniversary, 22 Aug.-11 Sept. and is centered on the 200th anniversary of Sir Walter Scott. There will be two big exhibitions, one at Parliament House and the other at the Waverly Market. Four opera companies, seven symphony orchestras will take part in the festival as well as dance companies and theatre groups.

# Mining News

**QUEBEC MINES MAY BE CLOSED BY YEAR-END:** The Quebec Resources Department is predicting that six Northwestern Quebec Mines will be shut down soon, possibly before the end of this year. Basing its prediction on condition and information supplied by the mining companies, the department says the shut-down appears inevitable. The mines involved are situated in the Rouyn-Noranda and Val d'Or regions of the province bordering on Ontario, about 225 miles northwest of Ottawa. They employ about 1,500.

Four of them, Wasamac Mines Ltd., East Malartic Mines Ltd., Marban Gold Mines Ltd. and Malartic Gold Fields (Quebec) Ltd., are almost exclusively involved in gold. Even with federal or provincial government assistance, a resources department spokesman said, they could not avoid shutting down eventually. High mining costs have made it impossible for them to operate profitably.

Preissac Molybdenite Mines Ltd. and Quemont Mine, the others named in the departments prediction, produce base metals.

Preissac, affiliated with Molybdenite Corp. of Canada Ltd., which closed in February has been offered a \$1.2 million subsidy by the Quebec government to continue operations at a mine near Cadillac, Que., formerly operated by Cadillac Moly Mines Ltd. A spokesman for Kerr Addison Mines Ltd. of Toronto, which operates the Quemont mine near Rouyn-Noranda, said recently, it probably will close this summer.

**RADEX BEGINS STRIPPING:** Crews have begun stripping operations on RADEX minerals at St. Lawrence on Newfoundland's Burin Peninsula. A D-8 equipped with a ripper has started construction of twenty miles of access road. When completed this will eliminate the need for helicopter transportation, which presently is unreliable due to poor weather conditions.

Since 15 March, when crews first moved in to begin the 1971 field season, fifty thousand feet of base lines have been cut and twenty line miles of soil sampling has been completed on a density

of six hundred samples to the square mile.

**CHESBAR TACKLES PELLET GRADE:** Chesbar Iron Powder Ltd., which has had its share of starting problems at its two operations shortly expects to be producing higher-grade iron pellets at its Niagara Falls, Ont. plant. It is completing a minor change in the coal addition and distribution system, after which directors are confident that pellets will grade 94 per cent plus 95 per cent iron content.

Initial production of reduced pellets was achieved in February, while output of iron ore concentrates at its mine near Miquelon, on the south shore of Waswanipi Lake in Northwestern Quebec, started in September. Mine and concentrator operations through the winter months were quite satisfactory, with each successive month showing improvements in both concentrate grade and cost of production, President R.E. Fasken said. The Niagara Falls pelletizing reduction plant has a capacity of 50,000 tons of pellets yearly. On the basis of inquiries from various companies for test shipments, there appears little problem in marketing the entire plant output, Fasken said.

Right now, Chesbar's production of high-grade pellets is aimed at the electric steel-making industry. However, Fasken said that developments in the iron powder field continue to be assessed. Should the latter indicate a more economic source for sales, a portion of the output will be directed towards this market.

Reserves at Miquelon are placed at more than 40 million tons of magnetic iron formation grading about 30 per cent which can readily be beneficiated into higher grade iron concentrates.

**STEEL SHIPMENTS:** So far this year, the amount of iron ore shipped from Great Lakes ports in the United States and Canada is down more than one million gross tons for each country, according to the American Iron Ore Association. Total tonnage from the United States at the end

of April, the first month of the Great Lakes shipping season, was 3,892,909, compared with 4,941,383 the previous year. Canadian tonnage was 4,147,056 for 1971, compared with 5,457,011 a year earlier.

(Continued on page 8)

## Legal Card

### DAVID B. SPARKES

Lawyer - Advocate  
Shopping Centre Mall

OFFICE HOURS: - 9 to 12 and 1:00 to 5:00  
Telephone 944 - 5948 (Residence).  
944 - 5555 (Office).

## WESTLAB

For All Your Favourite Beers

India—Black Horse — Labatt 50  
Molson's Export — Dominion  
Blue Star — O'Keefe  
Molson's Canadian

Home Delivery Service:  
Monday to Saturday 1  
p.m. to 9 p.m.

Warehouse Pick-up  
Service: Monday to  
Saturday 9 a.m. to 9 p.m.

Telephone orders  
taken Monday to  
Saturday 9 a.m. to 9  
p.m.

We have Cooler Service  
permitting us to  
provide our customers  
with chilled beer at all  
times.



Phone 282-6877  
or 282-6632

## CAROL PAINTING LTD. PAINTING CONTRACTOR DOMESTIC AND INDUSTRIAL PAINTING

REASONABLE  
PRICES  
5 MAPLE  
CRESCENT  
APARTMENTS  
PHONE 944-5551

PHONE  
TODAY  
FOR FREE  
ESTIMATE



PHONE 944-5551

# Labrador TV

## WEDNESDAY, JUNE 2

- 2:30 - Mr. Dressup
- 3:00 - Sesame St.
- 4:00 - 55 N Maple
- 4:30 - Take Thirty
- 5:00 - Edge of Night
- 5:30 - Drop-In
- 6:00 - Bobino
- 6:30 - Boite a Surprises
- 7:00 - Ooops
- 7:30 - Quote and Comment
- 8:00 - Singalong Jubilee
- 8:30 - Cent Mille Chansons
- 9:00 - Consommateurs
- 9:30 - TNA
- 10:30 - TBA
- 11:30 - News
- 11:50 - Gunsmoke

## THURSDAY, JUNE 3

- 2:30 - Mr. Dressup
- 3:00 - Sesame St.
- 4:00 - 55 N Maple
- 4:30 - Take Thirty
- 5:00 - Edge of Night
- 5:30 - Banana Splits
- 6:00 - Bobino
- 6:30 - Boite a Surprises
- 7:00 - Wildlife Country
- 7:30 - The Interns
- 8:30 - Cher Uncle Bill
- 9:00 - Dossiers
- 9:30 - Program X
- 10:00 - The World We Live In
- 10:30 - TBA
- 11:00 - Encounter
- 11:30 - News
- 11:50 - Name of the Game

## FRIDAY, JUNE 4

- 2:30 - Mr. Dressup
- 3:00 - Sesame St.
- 4:00 - 55 N Maple
- 4:30 - Take Thirty
- 5:00 - Edge of Night
- 5:30 - Drop-In
- 6:00 - Bobino
- 6:30 - Boite a Surprises
- 7:00 - TBA
- 7:30 - Beverly Hillbillies
- 8:00 - TBA
- 8:30 - Minos Cinq
- 9:00 - Donald Lautrec
- 9:30 - Laugh-In
- 10:30 - Tommy Hunter
- 11:30 - News
- 11:50 - Feature Film

You can smile again, when you use Tartaroff to remove tartar and stains from your teeth. Easy with new powder form formula. Pleasant tasting. Special with Tooth Brush only 98c at City Drugs Ltd-Labrador City: Northern Drug Stores Limited-Wabush.

## SATURDAY, JUNE 5

- 3:00 - Hockey
- 6:00 - Spiderman
- 6:30 - Bugs Bunny
- 7:30 - Phil Silvers Show
- 8:00 - Zut
- 8:30 - Zoom
- 9:30 - TBA
- 10:00 - Hawaii 5-O
- 11:00 - Pierre Jean Jacque.
- 11:30 - News Digest
- 12:00 - Cinema

## SUNDAY, JUNE 6

- 3:30 - Mr. Piper
  - 4:00 - Tween Set
  - 4:30 - Road West
  - 5:30 - Tour de Terre
  - 6:00 - Country Canada
  - 6:30 - Walt Disney
  - 7:30 - Quelle Famille
  - 8:00 - Le Monde Sous Le Masque
  - 8:30 - Ed Sullivan Show
  - 9:30 - Sunday at Nine
  - 10:30 - Week-end
  - 11:30 - News
  - 11:50 - Here and Now
  - 12:20 - Midnight Theatre
- The Vikings. (1958). Starring Kirk Douglas, Tony Curtis, Janet Leigh, and Ernest Borgnine. Viking king and his son kidnap Welsh princess and hold her for ransom.

## MONDAY, JUNE 7

- 2:30 - Mr. Dressup
- 3:00 - Sesame St.
- 4:00 - 55 N Maple
- 4:30 - Take Thirty
- 5:00 - Edge of Night
- 5:30 - Drop-In
- 6:00 - Bobino
- 6:30 - Boite a Surprises
- 7:00 - Skippy
- 7:30 - Reach for the Top
- 8:00 - Land and Sea
- 8:30 - A la Seconde
- 9:00 - Paradis Terrestre
- 9:30 - Partridge Family
- 10:00 - Front Page Challenge
- 10:30 - The Bold Ones
- 11:30 - News
- 11:50 - Nature of Things
- 12:20 - Love American Style

## TUESDAY, JUNE 8

- 2:30 - Mr. Dressup
- 3:00 - Sesame St.
- 4:00 - 55 N Maple
- 4:30 - Take Thirty
- 5:00 - Edge of Night
- 5:30 - Banana Splits
- 6:00 - Bobino
- 6:30 - Boite a Surprises
- 7:00 - TBA
- 7:30 - All Around the Circle
- 8:00 - TBA
- 8:30 - Men at Law
- 9:30 - Moi et l'Autre
- 10:00 - Rue des Pignons
- 10:30 - Tuesday Night
- 11:30 - News
- 11:50 - Here Come the Brides



Mr. R.F. Martin, District Superintendent, Lab. West, Integrated School Board, with Hon. E. John A. Harnum Lieut.-Governor of Newfoundland during the official opening ceremonies of A.P. Low Elementary School.

## A.P. Low school opening

MAY 15, 1971

**DISTRICT SUPERINTENDENT:**  
R.F. MARTIN, B.A. (Ed.) B.Sc., M.A.

Mr. Chairman, your honour the Lieutenant Governor, Mrs. Harnum invited guests, ladies and gentlemen, students, I must admit that what I have to say here tonight has taken considerable thought. This is not because it will be very long or for that matter very profound, but because the Chairman gave me a time limit and with so many incidents related to this opening I had to struggle over what to actually include in my remarks.

Anyone who has lived in this area for the past five years has probably been confused as to what exactly the Integrated School system in Labrador City consists of. You saw the formation of the Amalgamated School Board which operated the system in 1967-1969. In 1967-68 we had our classes in the C.E. McManus Building and in part of Labrador City Collegiate. At that time people naturally had trouble distinguishing us from the Collegiate system to which we belonged the previous year and with which we were then sharing a building.

In 1968-69 we had a similar type of physical arrangement to the 1967-68 one, with the same

identity problems.

Late 1969 saw the Amalgamated System renamed the Integrated System, in accordance with the changing structure of education in Newfoundland.

In 1969-70 it was necessary that we extend our sharing of schools and occupy half of Labrador City Collegiate, ten rooms in the planned extension Notre Dame Academy and all of C.E. McManus Building. Unfortunately, work did not progress as hoped and in September 1969 the 10 rooms at Notre Dame Academy were not ready and we had to establish classes in the various church facilities in the area. This was a difficult period for us and we were thankful for the co-operation received. As you may well imagine, after trying to tie together a system spread over what seemed to be any and all available classroom space, everyone connected with our system was elated and relieved to learn that we would be moving into a new school in 1970-71.

The actual planning of this school goes back to the spring of 1969, when consideration was given as to what type of school to build and which of the local school systems would occupy it. This planning was done in conjunction with the Iron Ore Company of Canada officials and the School Boards. The eventual decision was that the Integrated School Board would be receiving

an Elementary School.

Since extensions to other schools here were also being planned at this time it was decided to visit several new schools in Toronto. Members of our group included the local principals, an architect, school board representatives and a representative from the Iron Ore Company of Canada. The schools visited were of the open area design with all the latest education concepts in action. There was much seen which was impressive and in certain cases a little frightening. All of us saw innovations which should be considered when planning new schools or school extensions in our area.

After the Toronto visit, the Architect spent several months preparing possible school plans incorporating what we hoped would be the best of what we had seen.

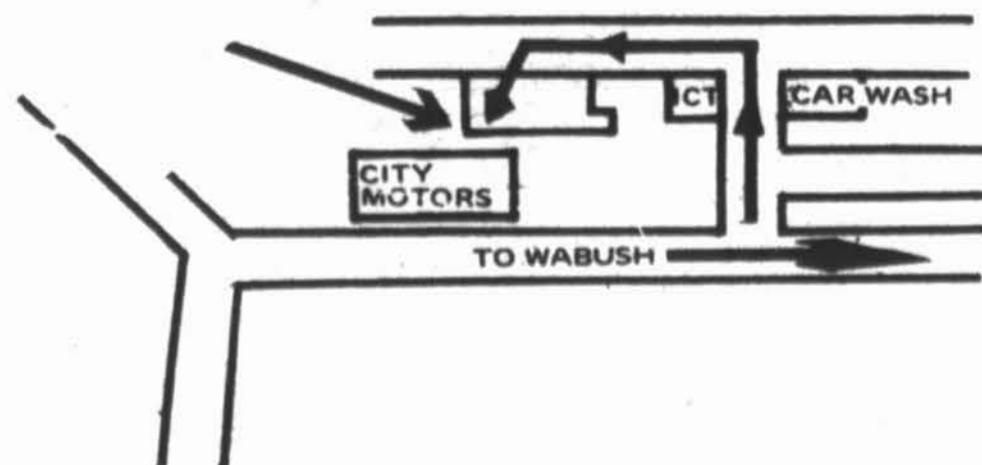
The plan for the building which we are now in was settled on in late 1969 and since that time we have seen the processes take place which led to our being here tonight.

The last statement was much easier to say than to achieve! We have had our difficult periods. We found that the school could not even be partially occupied until mid September. The extended holiday was very well received by students and teachers alike, but not the parents.

# Bruno Carpet & Furniture Ltd.

LABRADOR CITY

944-3111



# ANNUAL FINANCIAL REPORT

Presented by Mr. R. Gaudet, Treasurer, at the General Meeting held Sunday 23 May, 1971. . .  
Following the presentation of the President's Report, the following officers were elected for the 1971-72 year.

PRESIDENT: A.A. Bradshaw	DIRECTOR: Alex Snow
VICE-PRESIDENT: C.S. Devine	DIRECTOR: A.J. Knee
SECRETARY: P.J. Myers	DIRECTOR: Rollie Gaudet
TREASURER: L.J. Martin	DIRECTOR: C.J. Stamp
DIRECTOR: C.J. Masters	DIRECTOR: Jean Morency.

## ASHUANUPI SOCIAL CLUB LIMITED BALANCE SHEET APRIL 30

1970		1971
<u>\$70,877.40</u>	Total Current Liabilities	<u>\$70,378.11</u>
	Long Term Liabilities	
120,500.00	Bank Loans	97,794.00
36,000.00	Club	25,200.00
21,025.00	Apartment Building	21,025.00
<u>\$177,525.00</u>	Iron Ore Company of Canada	<u>\$144,019.00</u>
<u>\$248,402.40</u>	Total Long Term Liabilities	<u>\$214,397.11</u>
	Total Liabilities	
<u>\$12,895.47</u>	Total Current Assets	<u>\$18,280.96</u>
398,010.44	Property and Equipment	
105,009.93	Club	403,719.61
<u>503,020.37</u>	Apartment	105,009.93
267,513.44	Less: Appropriated Surplus	<u>508,729.54</u>
<u>\$248,402.40</u>	Total Assets	<u>\$214,397.11</u>

## ASHUANUPI SOCIAL CLUB LIMITED STATEMENT OF INCOME

FOR THE YEAR ENDING APRIL 30

\$176,783.12	Income	
4,095.00	Net Sales	\$213,472.48
53,327.61	Membership	4,947.00
	Other Income	52,875.70
<u>\$234,205.73</u>	Total Income	<u>\$271,295.18</u>
	Expenses	
81,197.73	Lounge	79,894.59
28,148.40	Tavern	32,250.49
2,357.73	Warehousing	6,309.05
40,333.93	Buildings	46,058.73
29,502.90	Administration	28,002.77
9,241.50	Donations & Sports	9,113.72
22,175.16	Fixed Charges	<u>23,230.39</u>
<u>\$214,285.47</u>	Total Expense	<u>\$224,859.74</u>
<u>\$19,920.26</u>	Income over Expenses	<u>\$46,435.44</u>

  
TREASURER

# On the labor front

## JOBLESS TREATED NOW AS DEADBEATS

In a short, but critical, 33-page document released recently, the National Council of Welfare sharply condemns the country's social and economic system and expresses serious reservations over the federal government's white paper on income security.

In unequivocal language not usually associated with government agencies, here are some excerpts from that report:

On economic growth  
"The gap between the rich and the poor will not be narrowed by the pursuit of economic goals of the past or the adherence of an economic philosophy of another era..."

"Invariably the choice is made of investing in economic growth today to end poverty tomorrow."

"But how is the economic

situation of the aged, the disabled or mothers with dependent children enhanced by larger corporate profits?"

"Even the argument that the working poor benefit from economic growth reduces itself to the crudest form of the long-discredited 'trickle down' theory, that the poor live off the leavings of the rich..."

On inflation control

"When a sudden, massive increase in unemployment results from government fiscal and monetary policy, as at present, welfare rolls increase accordingly."

"People who have always been self-supporting through employment find themselves with no source of income and must apply for social assistance."

"The response to this increase in welfare rolls...has been to cut back on already inadequate benefits and to apply eligibility

requirements even more repressively.

"Those who involuntarily sacrificed their employment in the interest of the national struggle against inflation should surely have been hailed as heroes..."

"Instead they find themselves denounced as deadbeats."

"Rejecting the work ethic in establishing national policy but employing it against the victims of that policy is the kind of contradiction which continues to permeate and distort our thinking."

Jobs and the Post-Industrial Society

Jobs and economic growth may have been synonymous in the industrial era, but it is "certainly not true of the post-industrial era of cybernation."

"On the contrary, the recent emergence in collective bargaining of job security as an issue larger even than wages indicates that economic growth will shortly be dependent on less jobs not more."

"In the period 1968-70, the size of the Canadian labor force increased by 3.9 per cent while the number who found employment increased by only 2.9 per cent."

"And yet the real Gross National Product (adjusted to remove inflation factors) jumped by 8.1 per cent in this period..."

"How long will it be before a completely automated assembly line makes men redundant at General Motors?"

"If our thinking remains tied to the concepts of the industrial era then we will enter cybernated society providing some men with full employment incomes for idleness while grudging offering bare subsistence to others."

Welfare patchwork

"There is at present a 'patchwork quilt of income support programs, producing widely disparate levels of financial support to persons in similar financial circumstances—disparities resulting from geography and from programs developed in isolation from one another, not from principles..."

"There are almost no assistance programs, either federal or provincial, to supplement the wages of the working poor..."

"No attempt has ever been made to justify differential treatment of citizens of equal need."

"It has simply been permitted to happen as, from time to time, over the years, each of the levels of government has added its ad hoc responses to particular situations..."

"The ... inconsistency of the result argues strongly for a consolidation of income support programs."

On welfare mothers

"The inconsistency of our

programs with our professed values is nowhere more clearly illustrated than in the allowances provided to welfare mothers and foster mothers respectively.

"A welfare mother is provided with \$20 to \$25 per child each month. If she finds it impossible to raise her child properly on that amount and gives him up, the child is sent to a foster home, where the foster mother is given \$80 or more a month for the care of the same child."

Taxes and Income security

"A good proportion of the taxes which most Canadians probably think now go to finance income transfer programs actually do no such thing."

"In 1970, for instance, the \$3.1 billion total of earmarked taxes collected by the federal government allegedly to finance three income transfer programs—Old Age Security, Canada Pension Plan and Unemployment Insurance—covered not only all federal outlays on these three programs but almost all federal expenditures under the family allowance and Canada Assistance plan (public assistance or welfare payments) as well."

"In other words, if the federal government is expending any money at all out of its general revenues for income security, it is only because it is using earmarked income transfer taxes for other purposes." — (Reprinted from Montreal Star).

## CERTIFICATES ISSUED

Stephen A. Neary, Acting Minister of Labour has announced the Provincial Apprenticeship Board has approved the issuance of Certificates of Apprenticeship to thirty-three apprentices throughout the Province who have completed training under the Apprenticeship Program. The certificates were approved at the Board's 107th meeting held at St. John's on 4 May, 1971. The successful candidates are as follows:

Name	Trade	Address
1. Howard Baker	Industrial Mech. (Millwright)	Labrador City
2. Kevin E. Rowsell	Industrial Mech. (Millwright)	Labrador City
3. Bertram A. Freak	Industrial Mech. (Millwright)	Labrador City
4. Jai Boong Kim	Industrial Electrical	Labrador City
5. Arthur Linfield	Industrial Electrical	Labrador City
6. Francis Hennebury	Industrial Electrical	Labrador City

Mr. Neary emphasized that information on plans of training available to young Newfoundlanders is obtainable from the Apprenticeship Branch, Provincial Department of Labour, Confederation Building, St. John's, or the Department of Labour branches at Corner Brook and Grand Falls.

## CRTC considers remote areas as priorities

OTTAWA — The Canadian Radio Television Commission says it is determined to maintain a priority for establishment of broad-

casting services in geographically remote areas of Canada such as Labrador, the Gaspe Peninsula, and Quebec's North Shore.

In a statement to CRTC said it will "accelerate discussions with the CBC, Telsat, the common carriers in formulating plans to expedite the extension of service as rapidly as possible."

The Commission will also initiate immediate discussions with the federal government on the matter.

It is also inviting submissions from interesting parties with constructive views on solving the problem of coverage more rapidly.

The CRTC statement said:

"Television has been in existence for 20 years in Canada. Viewers in the more densely populated areas have had their choice of television viewing expanded from two or more off-air channels to a multiplicity of choices on conventional and cable television. Currently, the Commission is aware of the energy and attention being given to the proliferation of services in these areas where a wide variety of choice already exists, and feels this development makes concern for Canadians without any ser-

vices or without service in their own language, to be of the utmost urgency."

Ambrose Peddle, Conservative M.P. for Grand Falls-White Bay-Labrador, lauded the statement from the Commission, but lamented it had taken so long to recognize the need. "Take the coast of Labrador for example... they have no television. Goose Bay primarily has a canned variety of TV, thanks mostly to the U.S. base. Wabush-Labrador City, that's completely canned from the benevolence of the Iron Ore Company of Canada. And Churchill Falls has a frontier package. So there is no network programming at all in Labrador."

"Imagine watching the hockey, a week later. Or Christmas programs in February."

Peddle said he had discussed the problem with the CBC some time ago, but the only method of transmitting networking programming into Labrador would be by micro-wave and by the time such a link was built, Telsat would be available to deem TV signals by satellite.

"I think it is high time CBC or someone make a public statement, defining what Telsat will mean, and when. In laymen's terms. No one understands the high-sounding technological phraseology that has been uttered so far," Peddle added.

The CRTC statement emphasized that not only would broadcasting services in remote areas contribute culturally and recreationally but they "are also vital to economic and resource development. These are factors which are often disregarded in considering Canada as a developing nation."

## Mining News

(Continued from page 5)

### TAX CHANGES COULD AFFECT MINERAL OUTPUT:

The Ontario Mining Association, representing 50 mining companies, says in its annual report that the tax white paper's main impact will be felt toward the end of the decade. This is a somewhat longer view than some mining industry objections have taken. The O.A.A. believes the proposed tax changes will have little immediate impact on mineral output. "The effects, in all probability, it will not be apparent for five to 10 years, by which time the lack of incentives will have curtailed the exploration necessary to maintain the flow of mining production." The association also foresees a decline in small mining operations, a trend already evident.

Mr. John A. Pigott, Vice President of operations for International Nickel Co. of Canada Ltd. warned the O.M.A.'s annual meeting that several metals are being depleted at an alarming rate. He referred specifically to tungsten, tin, mercury, and silver. However, heavily-used industrial metals such as copper and nickel are in no danger of running out because new techniques can mine lower grade ores, he added. Mr. Pigott was succeeded as association president by Mr. J.H. Stovel, president of Kerr Addison Mines Ltd.

## Mind Teaser

If a man sold 6 acres more than 3-5 of his land, and this left him with 14-1/2 acres less than 1/2 of his original land, how many acres does he now own.

ANSWER

85 acres. Letting X equal present acreage, form equation: 3X-5 plus 6 plus X-2 minus 14.5 equals X. Solve for X.

## LEGAL CARD

**ISAAC MERCER. Q.C., L.I.B.,**  
Lawyer, Notary & Advocate

365 Duckworth St.,  
Phone 726 - 8844

St. John's, Nfld.  
P.O. Box 1028.

**ARTHUR F. MILLER**

ADVOCATE - LAWYER

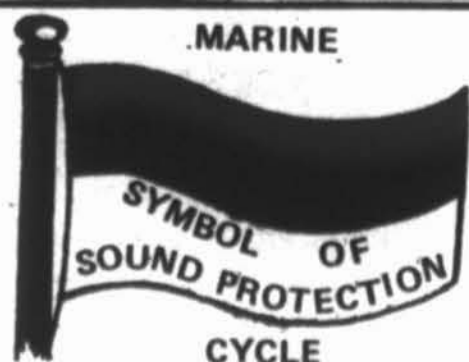
**SHOPPING CENTRE MALL**

LABRADOR CITY

OPEN 9:00 a.m. - 5:30 p.m.

PHONE MONDAY THROUGH FRIDAY 944 - 5909

FIRE



AUTO

W.A. MUNN INSURANCE LTD.,  
HOWARD FROST - AGENT  
PH. 944-2067

BLUE SLIPS-EASY PAYMENT PLAN-MEMBER C.U.A.

## SOLVE—A—CRIME

## YOU ARE THE DETECTIVE

There have been three knife-slayings of political figures in town during the past six months, and you know the killer is one of the seven members of a local hoodlum gang.

In your files are the names of these seven hoodlums. They are Al Rollins, a slick man with the cards; Sam Stevenson, confidence game artist; Benny Vance, racetrack tout; Bugs Bailey, stock-car racing enthusiast; Terry Maloney, slot-machine king; Karl Koenig, expert safe-cracker; and Jeff Green, professional wrestler.

You have managed to collect the following information on this gang: Al Rollins, Terry Maloney, and the knife-killer are the toughest and most ruthless of the gang, and have been under suspicion of involvement in at least a dozen brutal muggings during the past six months. Benny Vance, Jeff Green, and the gang leader were tried a year ago for armed robbery of a bank, but were acquitted.

Sam Stevenson and the killer have long been close pals, and recently Benny Vance, Jeff Green, and the gang leader threatened to expel them from the gang on suspicion of having held out on some of their "income." The killer and Bugs Bailey were at one time partners in a floating crap game. Bailey was operated on a month ago for stomach ulcers. The killer was at one time a lifeguard at a local swimming pool. The gang leader and Terry Maloney each has a girl friend in the chorus line of a current musical show.

Karl Koenig and the leader recently scouted another city in the state as a possible location for one of the gang's rackets. Al Rollins and the leader were at one time cellmates in prison.

Now, after studying this information, can you determine just who is the gang's leader and who is the knife-killer?

## SOLUTION

Al Rollins, Benny Vance, Sam Stevenson, Terry Maloney, and Jeff Green are all eliminated by the information as either leader of killer. Bugs Bailey is eliminated only as the killer. Karl Koenig is eliminated only as the leader. Therefore, Bugs Bailey is the leader and Karl Koenig is the killer.



## GLUE APPLICATORS

Wooden tongue depressors, such as are used by a doctor and obtainable at any drugstore, make fine glue applicators and paint stirrers. And they're so reasonable in cost . . . you have no qualms about throwing them away when they have served their purpose. (Gene Von)

## Home owners' ad column

FOR SALE: 1971 "Pinto", only two months old. For further information. Phone 282-3135

FOR SALE: (1) Xcnex, Cassette Tape Recorder. Includes ear phones, mike, two cassette tapes, head cleaner, etc. Only two weeks old, in perfect condition. Price \$30.00. Phone 282-3293.

FOR SALE: Westinghouse, Wringer-Washing Machine, in excellent condition. Complete with instructions. Phone 944-2559 after 6:30 p.m.

FOR SALE, 1964 Rambler "Classic". Price \$150.00. (Not licensed for 1971.) For further information Phone 282-3385.

FOR SALE: (1) Portable Radio, new, Price \$30.00. (1) Traverse drape rod, extends 13 to 20 feet. Phone 944-5692.

FOR SALE: (1) Family size Tent (Size 10 x 12 feet). Full floor, storm-flaps, double zippered door. Green, yellow roof. Outside poles. Used only four nights. Phone 282-6968.

FOR SALE: One "Starflite 6", Starcraft Camper. Also (1) 1963, one-half ton G.M.C. Pick-up. These items may be inspected at 23 Gilbert, Wabush, or Phone 282-6613.

FOR SALE OR LEASE: One house trailer 10 x 40 feet. Includes Stove and Refrigerator. For further information Phone 944-2741.

WANTED: Apartment. Man and Wife. No Children. Phone 944-5533.

WANTED: Furnished Living Accommodations for married couple. From 16 July to 1 August 1971. Please contact: G.F. Miller, P.O. Box 1520, Labrador City, Nfld.

WANTED: To Buy. A Piano. Please Phone 282-6658.

WANTED: To Rent. Basement apartment. Married couple with no children. Phone 944-5324 or 944-5108.

WANTED: To Rent. Apartment in Labrador City or Wabush. Please call 282-6271.

WANTED: To Rent. Furnished house for summer months. Interested parties contact Russell Payne, McNamara (Canada) Ltd. P.O. Box 5,000. Labrador City.

AVAILABLE: Can accommodate (2) male roomers. Please call 944-3163.

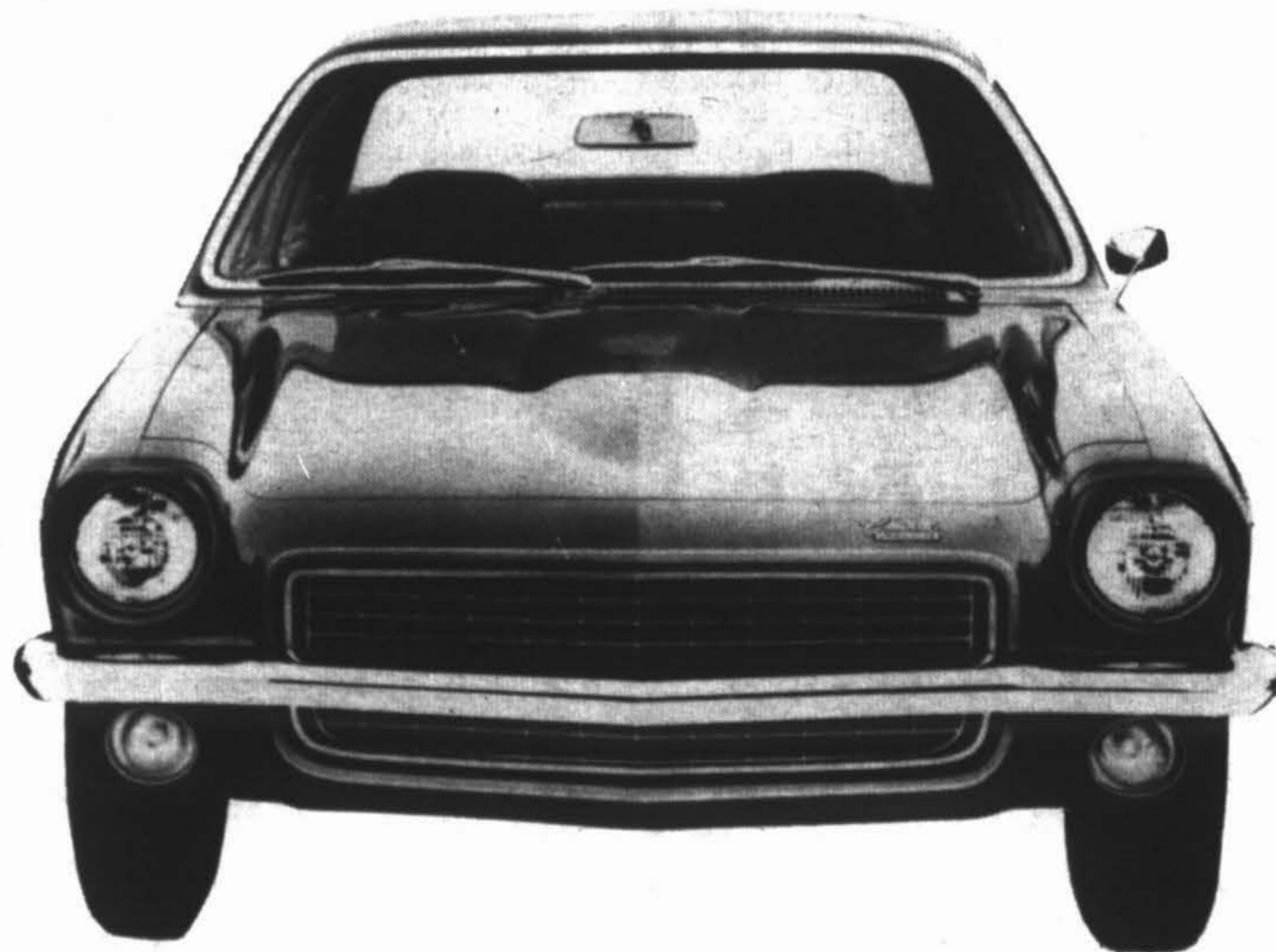
AVAILABLE: Room for Rent, in Carol Shopping Centre, for working girl only, to share with same. Phone 944-5979.

AVAILABLE: Room for Rent. In Labrador City. For further information Phone 944-3263.

AVAILABLE - Tool sharpening service. Hand saws, cross cut and rip saws. Setting, Joining and Retooling. Also circular saws, band and meat saws. Jointing and setting skates. Sharpening Knives, Axes, Wood Chisels, Plane Irons, Planer Blades, Scissors. For further information call 944-3397 or call at 804 Beothuck, Labrador City.



## VEGA NOW ON DISPLAY



THE LITTLE CAR THAT DOES EVERYTHING WELL

SEE IT TODAY

AT:

**CITY MOTORS (LABRADOR) LTD.**  
LABRADOR CITY NFLD. PHONE 944-2617

# Scanning the market

**CAPITAL-GAINS TAX:** With capital-gains tax imminent, there are two important implications for Canadian investors, especially small investors:

1. Understanding how a capital-gains tax should and should not affect his investment decisions.

2. The need for keeping complete records of every transaction for capital-gains tax purposes, in addition to the usual records kept for personal income tax purposes.

Record-keeping, particularly, will prove difficult for those investors who prefer to supervise their own investments. On the other hand, investors such as mutual fund shareholders, who, in most cases, have received prompt and comprehensive records for tax purposes from the funds in which they invested, will, in future find this record-keeping service even more valuable than it has been in the past.

A capital-gains tax is a tax on the price appreciation of an asset, whether it is a financial asset (stocks or bonds) or a real asset (land or building, with the possible exception of an individual's residence). One important feature of a capital-gains tax is its "refundability." For example, capital losses may be deducted from capital gains under certain circumstances. Details of this loss offset provision will not be known until the final tax bill is introduced.

Another important aspect of a capital-gains tax is the roll-over provision which allows tax-free transfer of assets under certain conditions. Whether it will be wise for Canadians to indulge in the U.S. practice of year end "tax-selling" depends on the roll-over details of the final legislation. The federal tax white

paper did not suggest roll-over provisions for stock transactions similar to those in effect in the U.S. In addition, we are not likely to have U.S.-style distinction between short-term (six months or less) and long-term (more than six months) capital-gains tax rates.

A good guess on the effective rate of Canada's capital-gains tax is that it will be no higher than, and possibly lower than, the U.S. capital-gains tax. The rate in the U.S. is 25 per cent, or one half the individual's personal income tax rate, (whichever is less).

A capital-gains tax should NOT lead you to the conclusion that you are locked in a profitable asset because you will have to pay a tax if you sell. This is only true under very special circumstances.

Nor is the opposite extreme position valid either, that you should continue to buy and sell as if no capital-gains tax existed once the tax legislation is passed.

What you SHOULD do is, unfortunately, rather difficult to execute but relatively easy to explain. In a world of capital-gains taxation, we will have to accustom ourselves to thinking of the government's "share" of our profits as an interest-free loan from the government. This is because a capital-gains tax is a liability to the government on which you do not have to pay any interest as long as you do not pay the liability (in other words, as long as you hold the stock).

With this kind of reasoning, a decision to hold rather than sell a profitable security merely POSTPONES this tax liability rather than AVOIDS it. Under these circumstances, when an investor is considering switching from one stock to another, the appropriate question to ask is: Is

it more profitable to hold this security in terms of its future dividend and capital-gains potential based on the current investment value (including the government's "share"), or is it more profitable to switch to another security from which you expect a higher overall return, but which will be earned on a smaller current investment (excluding the government's "share")? For example, if an investor sells 200 shares of a security at \$7.50 per share for \$1,500 (which he bought at \$5.00 per share), he has a \$500 capital gain, on which the gains tax payable is say 25 per cent—i.e., \$125. Therefore, the amount that is available for reinvestment is only \$1,375. This means that to justify an exchange of investments, the investor must ask if the \$1,375 reinvested in a different security will earn him more than his investment of \$1,500 in the original security. Since the method of arriving at this answer is extremely complex, the following general answer is given:

Neither extreme position or (a) ignoring the capital-gains tax completely or (b) expecting a percentage drop in price equal to the capital-gains tax rate before selling, is valid. The answer lies between these two extremes, and could also be affected by the investor's personal income tax bracket, the proportion of capital gains present in the current price—and the expected future performance of the asset and of any potential substitute asset with the same risk. For example, it can be shown that under the U.S. capital-gains tax laws, a 50-year-old investor with an income of \$7,500, who has held a stock for five years with a 50 per cent profit (bought at \$5.00 per share

with current market price \$7.50 per share) and who expects to earn about 6 per cent (after taxes) in the future on the same stock, need only find another investment with 6.32 per cent return in order to be at least as well off.

One of the major reasons for keeping adequate records is to enable the investor to gain all the advantages of the loss-offset and roll-over provisions legally available to him. Thus to satisfy the legal process of tax collection, and to guarantee the individual investor is minimizing his tax payable, it is extremely

important to have adequate proof of his transactions.

Introduction of a capital-gains tax will complicate life for the individual who does not have the resources or the desire to collect investment information and security transaction data. Therefore, investors would be wise to take steps either to prepare themselves for these new responsibilities, or seek the counsel and services of professionals in the industry, both from the point of view of investment decision-making and record-keeping.

## Daily Light

By D. R. PARSONS

*"Produce your cause, saith the Lord; bring forth your strong reasons, saith the King of Jacob."*

Isaiah 41:21

There lived in this great land of ours some years ago an Irish saint called Holy Ann. She lived to be one hundred years old. When she was a young girl, she was working in a family for very small wages under a very cruel master and mistress. They made her carry water for a mile up a steep hill. At one time there had been a well dug there; it had gone dry, but there it stood year after year.

One night she was very tired, and she fell on her knees and cried to God; and while on her knees she read these words: "I will open rivers in high places, and fountains in the midst of the valleys: I will make the wilderness a pool of water, and the dry land springs of water." "Produce your cause, saith the Lord; bring forth your strong reasons." (Isaiah 41: 18,21.) These words struck Holy Ann, and she produced her cause before the Lord. She told Him how badly they needed the water and how hard it was for her to carry the water up the steep hill; then she lay down and fell asleep. She had pleaded her cause and brought forth her strong reasons. The next morning early she was seen to take a bucket and start for

the well. Someone asked where she was going, and she replied, "I am going to draw water from the well." "Why it is dry," was the answer. But that did not stop Holy Ann. She knew whom she had believed, and on she went; and, lo and behold, there in the well was water, pure, cold water. That is the way the Lord can fulfill His promises. "Produce your cause, bring forth your strong reasons," and see Him work in your behalf.

How little we use this method of holy argument in prayer; and yet there are many examples of it in the Scripture, Abraham, Jacob, Moses, Elijah, Daniel—all used arguments in prayer, and claimed the divine intervention on the ground of the pleas which they presented.

In Isaiah we read, They that wait upon the Lord shall renew their strength they shall mount up with wings as eagles; they shall run, and not be weary; and they shall walk, and not faint. Fear thou not; for I am with thee: be not dismayed; for I am thy God: I will strengthen thee; yea, I will help thee; yea I will uphold thee with the right hand of my righteousness. (Isaiah 40:31. 41:10.) Call unto me, and I will answer thee, and shew thee great and mighty things, which thou knowest not.

(Jeremiah 33:10.)

When you feel at the end of your tether, remember God is at the other end.

# Dixie Lee Fried Chicken TAKE-HOME MENU

Sir Wilfred Grenfell Hotel

WABUSH



IF YOU LIKE CHICKEN — YOU'LL LOVE DIXIE LEE		
<b>DIXIE SNACK</b> 2 Pcs chicken with french fries \$1.05	<b>DIXIE DINNER</b> 3 Pcs chicken, french fries cole slaw and roll \$1.55	<b>ECONOMY BOX</b> 10 Pcs chicken \$3.60
<b>DIXIE BUCKET</b> (4-6 Persons) 12 Pcs chicken french fries and rolls \$4.95		<b>DIXIE BARRELL</b> (7-10 Persons) 20 Pcs chicken \$5.95

NO WAITING

Phone 282-3221

FAST SERVICE

## LABRADOR CITY COLLEGIATE

### INVITES APPLICATIONS FOR THE POSITION OF SCHOOL NURSE

FOR THE ACADEMIC YEAR 1971-72

Preference will be given to applicants having public health nursing or experience in school nursing. All applicants must possess a registration licence for the Province of Newfoundland.

The successful applicant must be prepared to teach health care and first aid as well as perform regular nursing duties.

Applications, stating qualifications, should be made to the following on or before JUNE 12, 1971:

The Principal  
Labrador City Collegiate  
P.O. Box 1670  
Labrador City

# Forest fire travel regulations are announced

Forest Fire Regulations and the Forest Travel Order came into effect this year at midnight, May 21, the Minister of Mines, Agriculture and Resources, W.R. Callahan, has announced.

The Forest Fire Regulations ban all outdoor fires except in specified instances, and the Forest Travel Order provides conditions governing woodland travel during the summer.

Mr. Callahan said the regulations, which cover all of Newfoundland and Labrador, will be in effect until midnight, September 1, but may be extended beyond that date if warranted by high forest fire hazard conditions.

It was also announced that all burning permits have been cancelled, effective midnight May 21. Until further notice, the only burning permits issued will be special permits signed by the Minister.

Mr. Callahan outlined the main points regarding the lighting of outdoor fires and the forest fire safety precautions as they apply to all persons frequenting forest lands during the summer months.

A person may NOT light an outdoor fire without a permit, except:

a) in a prepared location in a Provincial Park when an officer of the Parks Service is in attendance and permission to light a fire is given by the attending officer;

b) on a sand or gravel beach, if i) the fire is located more than fifty (50) feet from the nearest woods, brush or other inflammable material;

ii) the fire does not exceed a surface area of four (4) square feet, and

iii) the fire is located within four (4) feet from a body of water whose surface area exceeds one hundred square feet.

c) in a garbage disposal unit, if i) the unit completely contains the fire and is adequately screened to prevent the escape of sparks and other burning material, and

ii) the unit is located on private property and at least fifty (50) feet from any woods, trees, or brush.

**Fires on sand or gravel beaches and in garbage disposal units are not permitted when the forest fire hazard is extreme.**

Cigarettes, cigars and pipes may be smoked outdoors when the smoker is in a sitting position.

The use of a wood burning stove is prohibited unless the chimney is equipped with a screen to prevent the escape of sparks and other inflammable material.

More detailed information concerning the Forest Fires Regulations and the Forest Travel Order may be obtained from local Forestry Officers and Forest Ranger Stations.

The Minister said the Regulations and Travel Order set down the basic precautions which must be followed if we are to prevent the careless destruction of our forests. Any infringements of these precautions could have serious consequences, and those responsible will be dealt with severely.

Under the Forest Travel Order, non-residents may not travel the woodlands unless accompanied by a licenced guide.

## TO RESIDENTS OF LABRADOR CITY AND WABUSH

Dear Constituent:

The Humber Valley Broadcasting Company Ltd. of Corner Brook, Nfld. has applied to the Canadian Radio-Television Commission for a licence to establish a radio station at Wabush to serve the Wabush Labrador City area.

The proposal is for a fully functional studio with continuous broadcasting from early morning to late night including, of course, live broadcasting.

I personally think this would be a valuable addition to the Labrador City-Wabush area and I fully support the proposal.

I am enclosing a short questionnaire on which I request that you indicate your approval or otherwise and return to me in the enclosed self-addressed envelope. No postage is required. I would request that all persons aged 19 years or over sign the questionnaire.

I request your co-operation in returning promptly. If the response is as great as I expect it will be, it is my intention to appear at the CRTC hearing in Ottawa on June 8th and present your wishes to that body.

Ambrose Peddle, M.P.  
Grand Falls-White Bay-Labrador

QUESTIONNAIRE REGARDING The Proposal of Humber Valley Broadcasting Co. Ltd. to establish a Radio Station at Wabush, Labrador

1. Q. How many persons reside in your household?

A. \_\_\_\_\_

2. Q. Do you approve of the proposal for the establishment of a private radio station to serve the Labrador City-Wabush area by the above named Company?

A. Yes No

ADDITIONAL COMMENTS:

\_\_\_\_\_  
\_\_\_\_\_  
\_\_\_\_\_

Signed: \_\_\_\_\_  
Address: \_\_\_\_\_

## A.P. Low school opening

(Continued from page 6)

Partial occupation day came, minus things such as enough desks for teachers and students, waste paper baskets, sufficient washrooms, P.A. system, drapes, clocks and bells. Upon partial occupation of this building we found that instead of being under one roof, we still had certain classes in other schools. We did, in fact, have students in each school in Labrador City.

Finally the day arrived!, when in December of 1970 we were able to have all of our Kindergarten, and Iv-VIII students in this building. Our I-III's occupy the C.E. McManus Building. Thus after four years we were in a situation of some permanence. I trust that since that time our pupils and their parents can see a more definite picture of the Integrated School System.

While I may seem, and in fact I am, overjoyed to have our system in a more physically manageable and recognizable plant, I imagine that the other principals are happy to be free of us.

I take this opportunity to most sincerely thank the principals of Labrador City Collegiate and Notre Dame Academy for their co-operation during our "sharing years". I also wish to publicly thank our teachers for their patience during our most trying periods. Mr. Spracklin deserves credit for his ability to look on the good side of things even when he needed to be in 10 different class locations at the same time. To the students, I think they even enjoyed some of the situations they found themselves in, their ability to adjust seemed much better than ours. I trust that they will have the proper appreciation for our new facilities. To the parents, if you managed to bear with us in the past, I assure you that the

future seems more straight forward. That is said with some hesitation since the word "expansion" is very common around here now and that has always spelled trouble for school facilities. I realize that it must be a relief for parents to know exactly which school their child is attending and to know that you will not have to do the 100 yard dash from school to school when we have parent nights.

Other thanks are in order also. I would personally like to thank Mr. Hubert Warsch of the Iron Ore Company of Canada for his part in co-ordinating the work which has taken place here. He has been a driving force behind the school construction and furnishing, we are most appreciative of his services.

The school opening tonight is the culmination of many efforts especially from a planning and construction point of view. Now comes the real test, how are we going to make the best and most effective use of our facilities for the education of our students. Time will be the arbitrator of how far we get toward the goals of education. The motto of the school, "Ipsa Scientia Potestas Est", "Knowledge Itself Is Power"; with compliments to the originator Sir Francis Bacon and the Latin knowledge of Mr. Maxwell Haines, a local teacher who suggested it, this motto gives some indication of how strongly we feel about what we are trying to achieve.

Worried about falling hair, dandruff, or scaly, itchy scalp? Try Lanex, a new scalp treatment, Lanolin based. Greaseless. Satisfaction or money back. \$2.50 jar, at City Drugs Ltd.- Labrador City Northern Drug Stores-Wabush.

# CAMPBELL'S SERVICE

"WHERE THE CUSTOMER COUNTS"

944-2673

FOR ALL YOUR MOTORING NEEDS

TUNE-UPS, BRAKE SERVICE, MUFFLERS,

SHOCK ABSORBERS, GREASE & OIL

FRONT END ALIGNMENT & WHEEL BALANCING

TIRES BATTERIES, etc.

OPEN 8:00 a.m. to 5:30 p.m.

GAS: 24 HOURS PER DAY

REMEMBER: Our employees are members of

U.S.W.A. Local 6480

# For your information

**R.C.L. RAFFLE:** The Royal Canadian Legion, Grant-Crerar Branch No. 57, P. O. Box 159, Wabush, Labrador, wish to announce that tickets for their draw of 30 July 1971, are now on sale. The prize list is as follows: 1st Prize — \$20,000.00 (Last ticket Drawn). 2nd Prize — 1971 Chrysler New Yorker, plus 22 ft. travel trailer (Winning ticket at half way Mark of the total tickets sold). 3rd Prize. \$5,000.00 fur coat or cash (winning ticket quarter way Mark of the total tickets sold). Plus money refunded on every fiftieth ticket drawn. Tickets at \$100.00 may be purchased at the Legion or from Legionnaires of Branch No. 57, Wabush.

**C.W.L.:** The Catholic Women's League of Wabush will be holding their monthly meeting on Sunday 6 June at 8:00 p.m. in the church basement. This will be the last meeting until September.

**RETARDED CHILDREN'S ASSOC.:** Our special thanks this week to the Ladies Auxiliary of the K. of C. who presented us with a cheque for \$100.00. Part of this will be used to purchase a set of traffic signs and signals for use in teaching the children the fundamentals of traffic safety. A use for the remainder will be decided upon later. One suggestion is a set of cars and trucks suitable for creative play but also sturdy enough to be ridden upon by a small child.

The children were looking forward to a visit from Mrs. Connie Woodford of the K. of C. Auxiliary last week but unfortunately family circumstances prevented her from coming. Hopefully she will be

able to visit before school closes for the year.

The cupboards donated by the Lions Club are proving very useful and convenient. The appearance of the room was much improved by the coat of paint also donated by the Lions. The Lions have been among the Association's staunchest friends and their support is most appreciated. Mr. Jean Morency, President of the Lions, is also a Local Director of the Retarded Children's Assoc. and made the arrangements to have these jobs done. Basic supplies for the class were provided by the three local school Boards, without whose promise of support the project could never have been started. These will stay with the class when it transfers to the control of the Special Services Division of the Dept. of Education, while gifts for individuals or groups will remain with the Assoc. for use with future projects, such as a pre-school class or an activity center.

The Assoc. hopes to hold a general meeting on Tuesday 15 June in the classroom, where members and friends can have a chance to see some of the work done by the children. The main purpose of the meeting will be to discuss the matter of setting up a pre-school or head-start program for the handicapped children of the area.

Anyone who feels they have a child who could benefit from such a program should get in touch with Mr. Kay Armstrong at the Public Health Office, 944-5000, or Mrs. Helena Moore at 944-2241, unless the child was among those seen by Dr. Neville Smith, in February.

## THE REVOLUTION IN EDUCATION

More than eight out of ten of the mentally retarded could be taught enough to go out into the world to live with other people, and even to support themselves.

Unfortunately, until now, all but two out of the ten have been denied the opportunities they need in education. What they need from the schools is a little more than others receive. What they have been getting is a great deal less.

This too is changing — as we learn that it helps the community, as well as the retarded, to provide them with proper training. Prepared to take their place in society through special education and vocational training, the retarded become contributing members of the community, rather than drains on it.

As part of the revolution, a great deal of research is going on now about the learning processes and about how to improve the quality of education — for the retarded and, consequently, for everyone.

It has been discovered, for example, that the crucial period in the development of a child's intelligence is his first three years — a period which formal education has been neglecting.

And now we know that intelligence is not fixed at birth, but that a child's mind can be stretched and strengthened by stimulating contacts.

We have learned, also, that children who are apparently normal but who received none of the stimulation that comes from parents reading to them, talking with them, playing games with them, arrive at school age hopelessly behind others. They begin a pattern of failure that eventually results in a form of mental retardation. Now it has been demonstrated that these same children, provided a special enrichment program during their

preschool years, can be saved from mental retardation.

Advances in teaching methods continually offer more hope. The advances have been many and include such things as teaching machines which have proved surprisingly effective in some situations.

One such device exposes the child to information in very small, connected units.

In a typical situation, a little girl sits in front of a desk-size machine, answering simple questions. The machine also provides correct answers immediately, so she can check and correct himself. As the little girl builds a stock of correct answers, the machine begins to lead her into more difficult areas but not until her basic information and, even more important, her confidence have been solidly established.

New devices, new techniques, have demonstrated that skills formerly regarded as beyond the retarded now can be learned by many of them.

This is an exciting area of adventure. And you can be a part of it too.

You can:

1. Use your own influence, or that of a group to which you belong, to urge your school system to:

a. Provide an adequate number of classrooms for the retarded.

b. Hire specially trained teachers or help those already in the program get the special training they need.

c. Employ more psychologists in elementary and nursery schools so that retarded children can be identified and helped as early as possible.

d. Provide vocational training for the teenage retarded — along with regular academic subjects — so that they can begin preparing for employment.

2. Provide gifts of special equipment for classes for the retarded, or help raise funds to buy this special equipment.

3. Volunteer to help the over-worked teachers of the retarded in public and private schools and day care centers. Even in the best of systems, teachers generally can use the help of volunteer aids.

## MIND TEASER

If 13 years ago the ages of Tom and Jerry totaled 36 years, and if in 4 years from now Tom will be as old as Jerry is now, how old is each today?

## ANSWER

Tom 29 and Jerry 33 years old. Letting Z equal Tom's age now, and (X plus 4) Jerry's age, form equation: X minus 13 plus (X minus 9) equals 36. Solve for X, Tom's age; add 4 for Jerry's age.

## COMMUNITY CONCERTS

On May 14th the members of the local Community Concerts Association were treated to a most enjoyable evening. The last concert for this season was given in an expert and informal manner by harpists John Escosa and Joseph Longstreth. The varied and interesting music selections were further enhanced by the light and informative comments of the performers on the development of the harp as a musical instrument. After the performance the audience was invited to take a closer look at the harps and many were delighted at the opportunity to talk further with Mr. Longstreth and Mr. Escosa. The evening was one to be remembered and it was expressed that even one such evening warrants a community concert membership. Your patronage during the year was appreciated and we look forward to your support in the fall campaign for next year's concerts.

## THEATRE

Il y aura les samedi et dimanche, 29 et 30 mai au Labrador City Collegiate a 8:30 p.m., une piece de theatre intitulee "L'Effet des Rayons Gamma sur les Vieux Garçons" de Michel TREMBLAY.

Les billets sont presentment en vente.

Il s'agit d'une quebecoise ecrite en joul, a la fois tres drole et tres tragique. L'action se passe dans un quartier de taudis. La veuve, Beatrice, personnage principal, garde un vieillard (un "zombie") pour gagner la vie. Elle a deux filles, une epileptique, et une "moitie genie". Beatrice considere qu'elle a rate sa vie ("zero, zero, zero..."). Le tout se termine deses perement.

—mettreur en scene:  
G. MASSE

**J.R.S. COLLEGIATE:** The school will be presenting a Music Festival on Friday 4 June from 9:00 a.m. - 5:00 p.m. and 7:30 p.m. - 9:00 p.m. The finals are tentatively scheduled for the Auditorium on Sunday 6 June at 7:30 p.m. The General Public are cordially invited to attend.

**O'BRIEN HALL:** The O'Brien Hall is now available for Weddings, Dances, Meetings, Stag Parties, etc. For further information Phone 944-5094.

**MEDICAL:** Dr. James Dolan has moved his practice from Wabush to Labrador City. Dr. Dolan may be contacted at the Captain William Jackman Memorial Hospital.



## CITY DRUGS


*for Your Drug Needs*



### Aids for a Speedy Recovery

Illness at home? A few little do-gooders — the right sickroom aids — go a long way in keeping patients comfortable, making care easier. See us for sickroom supplies.


CALL 944-5395  
CAROL SHOPPING CENTRE, LABRADOR CITY



... means money out of your pocket.

A wheel 1/2 inch out of alignment will scrub sideways 87 feet in every mile! It takes only a few minutes to check wheel alignment the scientific "beam of light" way with the Visualiner. A few minutes may save you many dollars!

Come in for a  
**"VISUALINER"**  
check-up

**CAMPBELL'S**   
**SERVICE**

Where the Customer Counts™ 844-3871

# TV REPAIRS

PHONE 944-5011

ALL WORK GUARANTEED

# On the lighter side

**ONE SIDED:** In Miami, Florida, a man called for jury duty pleaded to be excused from serving because he could not hear out of one ear. The judge denied the request, saying: "You need only one ear. This one a grand jury and it will be hearing just one side of the case."

**PLAY BALL!:** An Englishman came to the United States for the first time, and was taken by his friend to see his first baseball game. The first man up hit a single and dashed madly to first base. The next man up hit a short double. The man on first ran swiftly to third, and the double-hitter nearly broke his neck sliding into second. The third man up was purposely walked to fill the bases, and he sauntered lazily to first. The Englishman said, "Why does he walk so slowly while the others ran so fast?" His friend replied, "Because he got four balls." The Englishman thought a moment and mused, "By Jove, that would slow him down a bit, wouldn't it?"

**OUT TO BREAKFAST:** The man walked into the cafe and ordered eggs for breakfast. "Scrambled?" asked the waitress. "Fried," said the man. "But the scrambled are much better," the waitress insisted. "Fried!" the customer repeated. "But the chef puts in bits of bacon. You'll like them better scrambled." "The man put his head in his hands. "Look, lady," he shouted, "if I wanted a fight during breakfast, I could have stayed at home!"

**OPERATION BEDROOM:** The president of Guatemala has instructed wives of his cabinet ministers to wear a black negligee at night to deter their husbands from extra-martial adventures.

**A SMASHING PERFORMANCE:** Five furniture salesmen claimed a world record in London, England, for smashing a piano to bits, one minute and 23.5 seconds, before a B.B.C. television audience.

**LOCATION:** A visiting friend was admiring our neighbor's new home. "It's really nice Jack," he said. "Yes, I like everything about it except the location," said Jack. "What's wrong with the location?" asked the friend. "Well," said Jack: "It's just a little too far out of my income bracket."

**THREES' A CROWD.** They were standing in the hall outside her door. He was trying to make out with her, and trying to get inside of her apartment, but having little luck. Finally, in disgust he said, "Well, I might as well go on home... there's no need for the three of us standing here in the hall."

**WELL ROUNDED FIGURES!** The London county council has received an application from a sugar importer to open a restaurant featuring belly dancers, in the heart of the city's financial district.

**EVERY MAN TO HIS OWN SPORT!** A woman in Vancouver was granted a divorce after testifying that her husband was a man of "great enthusiasm" and spent five nights a week at the bowling alleys.

## The Bible Today

Following the election of Dr. Salvadore Allende, a Marxist politician of Chile, a Te Deum was held at the Cathedral in which Roman Catholics, Orthodox Catholics and Evangelicals were present by invitation and took part. This was the first such service on record, and it was held at the express request of the newly-elected President, Dr. Allende. All his Cabinet Ministers, many of them Marxists, were present.

Cardinal Archbishop R.S. Henriquez presented a beautiful copy of the Jerusalem Bible to President Allende with the following inscription: "I dedicate this copy of the Bible, the Book Supreme, with affection and respect to Excelentissimo President Salvador Allende". The President thanked him and said: "Though many would think differently, I have spent many hours of my life reading this great holy Book." In mid-December the Bible Society of Chile gave 50,000 copies of the Scripture Selection 'A Saviour', beautifully illustrated in colour, to the wife of the President, Mrs. Tencha Bussi de Allende. These Selections were to be inserted in the Christmas packets for poor children which were sent out as part of a campaign of which Mrs. T.B. de Allende was the head.

### Suggested Daily Bible Readings

Thursday, June 3: Isaiah 44: 1-3.  
Friday, June 4: Isaiah 61: 1-3.  
Saturday, June 5: Isaiah 63: 7-14.



St. John's Old Comrades, Eastern Representative, in the Dominion Darts Finals held recently at Labrador City.

# ULTRA WIDE TIGER PAW 60

**BELED**

## FASTRAK

— Blackwall  
Dual white stripe sidewall styling  
The "ORIGINAL EQUIPMENT"  
Tire on many 1971 model cars

THE AUTHENTIC "DRAGSTER" CONTOUR with racing-image and raised white lettering

2-plus-2 construction  
2-ply nylon cord body  
2-ply hi-modulus rayon belt

## BELED LAREDO

BETTER KNOWN AS **The rain tire**

- COMPLETE TIRE SALES AND SERVICE
- INDUSTRIAL RUBBER PRODUCTS
- STRATOFLEX HIGH PRESSURE HOSE AND FITTING
- PREMIUM BATTERIES



# Hancock Tire

COMPANY LIMITED

LABRADOR CITY PHONE 944-2641

# Speaking of Sports

**TRACK MEET:** The 1st Labrador West Inter School Track Meet was a tremendous success, both from the participant and spectator viewpoint. And Mr. Dennis Furlong and his fellow organizers are to be congratulated on a splendid job.

This week we are publishing the winners in the Junior events. In our next issue, names of the various senior winners will be published.

**ARENA HOURS OF OPERATION:** Monday, Wednesday, Saturday. 8:00 a.m. to 10:00 p.m.  
Tuesday, Thursday, Friday. 8:00 a.m. to 4:30 p.m.  
Monday thru Saturday, closed from 12:00 Noon to 1:00 p.m.  
Sunday, closed all day, except for special events.

**SPORT FIELDS:** Over recent days, people learning to drive, were observed on local sports fields. The turf has been badly disrupted on the new field and soccer goals damaged. Please keep vehicles of these fields, they are not public thoroughfares.

**FLOOR HOCKEY:** Teachers and Whitemen are, at this writing, tied for first with eight points each. While the Bears and Hawks share the cellar with just two points. Leading scorers are J. Murphy, D. Miller and P. Dube.

**TEEN AGE SUMMER PROGRAM:** At a recent meeting, an Adult Policy Committee was elected, also a Youth Advisory Committee (consisting mainly of student council members of both high schools). Following further meetings a complete program has been mapped-out. And from perusal of planned activities it looks like a very promising program. The Committees wish to thank Major Johnson, Administrator of the Capt. Wm. Jackman Memorial Hospital, for her work in obtaining a Federal Government grant to assist the program.

## LABRADOR WEST INTER SCHOOL TRACK MEET RESULTS 1971 GR. FOUR GIRLS

50 Yds., 1. Debbie White, N.D.A.; 2. P. McWilliams, J.R.S.; 3. P. Reddick, N.D.A.; 4. S. Smith, A.R.L.  
Spud and Spoon: M. Hickey, N.D.A.; White, A.P.L.; 1. Dorcan, J.R.S.  
Standing Long Jump: M. Hickey, N.D.A.; L. Ste Marie, N.D.A.; L. Dignard, A.P.L.; E. Felker, A.P.L.  
220 Yds: B. Simms, A.P.L.; P. Reddick, N.D.A.; C. Dawson, N.D.A.; S. Smith, A.P.L.  
Medicine Ball Throw: 1. S. Janes, J.R.S.; 2. F. Mould, J.R.S.; 3. C. Christie, N.D.A.; 4. P. Reddick, N.D.A.  
Sack Race: 1. C. Christie, N.D.A.; 2. C. Hussey, J.R.S.; 3. K. Butt, A.P.L.; 4. D. Arnold, A.P.L.  
Relay: 1. N.D.A.; 2. A.P.L.; 3. J.R.S.  
Top individual Points: Margo Hickey, N.D.A. 20.

## GRADE FOUR BOYS

50 Yds.: 1. W. Flynn, J.R.S.; 2. G. Austin, A.P.L.; 3. R. Leonard, N.D.A.; 4. T. Lawlor, N.D.A.  
Spud and Spoon: J. Burchert, N.D.A.; C. McHattie, A.P.L.; P. Leonfellner, A.P.L.  
Standing Long Jump: P. Leonfellner, A.P.L.; K. Ritzey, A.P.L.; T. Lawlor, N.D.A.; A. Bouchard, N.D.A.  
220 Yds.: C. McHattie, A.P.L.; B. Lake, A.P.L.; R. Leonard, N.D.A.; A. Bouchard, N.D.A.  
Medicine Ball Throw: T. Lawlor, N.D.A.; A. Tremblett, A.P.L.; T. Hopkins, A.P.L.; V. Burns, J.R.S.  
Sack Race: 1. P. Leonfellner, A.P.L.; 2. P. Penney, J.R.S.; 3. D. Hayward, J.R.S.; 4. G. Hoyles, J.R.S.  
Relay: 1. N.D.A.; 2. A.P.L.; 3. J.R.S.  
Top Individual Points: Perry Leonfellner, A.P.L. 25.

## SQUIRTS BOYS (Gr. 5-6)

50 Yds.: D. Penney, A.P.L.; A. Trahan, N.D.A.; N. Thibault, J.R.S.; K. Bolger, N.D.A.  
880 Yds.: C. McInnis, A.P.L.; D. Brown, A.P.L.; D. Linfield, A.P.L.; T. Williams, J.R.S.  
Standing Long Jump: Hearn, J.R.S.; D. Arnolds, A.P.L.; A. Trahan, N.D.A.; T. Brazil, A.P.L.  
Shot Put: T. Brazil, A.P.L.; G. Shave, A.P.L.; D. Brown, A.P.L.; K. Bolger, N.D.A.  
220 Yds.: D. Timmons, N.D.A.; T. Brazil, A.P.L.; B. Barns, J.R.S.; D. Snow, A.P.L.  
High Jump: Gus Shave, A.P.L.; C. McInnis, A.P.L.; D. Linfield, A.P.L.; P. Dugais, N.D.A.  
440 Yds.: D. Brown, A.P.L.; C. McInnis, A.P.L.; B. Barns, J.R.S.; D. Penney, A.P.L.  
Relay: 1. A.P.L.; 2. J.R.S.; 3. N.D.A.  
Top Individual Points: Charlie McInnis, A.P.L. 24.

## SQUIRTS GIRLS (Gr. 5-6)

50 Yds.: S. Christie, N.D.A.; V. Whitten, N.D.A.; D. Mandville, N.D.A.; L. Parsons, A.P.L.  
880 Yds.: D. Starn, A.P.L.; B. Homer, A.P.L.; C. Butt, A.P.L.; C. Hamel, N.D.A.  
Standing Long Jump: C. Butt, A.P.L.; S. Leonfellner, A.P.L.; L. Reddick, N.D.A.; C. Smith, A.P.L.

(Continued on page 15)



## GARDEN MARKERS

Small glass jars with screw tops make excellent waterproof and windproof markers for the vegetable or flower garden. Simply nail the lid to a stake and inset the empty seed package. (Gene Von)



**Gander Team. Provincial Darts Champions, pictured at the Ashuanipi Social Club, shortly after clinching 1st Place.**

# From the national press

## A SHORTAGE OF EXPERTISE

(Reprinted from The Toronto Globe & Mail)  
The sum and total of the economic know-how in the federal Cabinet now that Eric Kierans has departed, is not conducive to confidence

Prime Minister Pierre Trudeau has dabbled in economics, but not even he, surely, would describe himself as a heavyweight in the profession. Finance Minister Edgar Benson is not an economist at all he is an accountant, and his performance since the production of the white paper on taxation has been uncertain that one is left with very grave doubts that he knows what he is about.

Mitchell Sharp was an economist but he was also a civil servant and his ap-

proach, even as Finance Minister, remained that of the mandarin, in any case he has plainly put all thought of economics behind him as he deals with great affairs of the world. President of Treasury Board C.M. Drury was in business, it does not seem to have equipped him for the economics of a technological and supranational age.

Minister of Regional Economic Expansion Jean Marchand was a union leader.

Minister of Industry, Trade and Commerce Jean-Luc Pepin was a university professor and a political commentator. Liberal House Leader Allan MacEachen has spent a considerable amount of time in the vicinity of economic studies, but if any of it took it never showed in his political career, Minister of Fisheries and Forestry Jack Davis is an

engineer-economist, and there was a time when he talked a good deal of sense about using Canadian resources to make Canadian jobs, but Cabinet membership seems to have stopped his tongue.

Then there is Minister of National Revenue Herbert Gray, off somewhere with that long delayed report on foreign ownership of industry and what if anything, should be done about it.

Is there any artillery in that line-up informed enough to challenge the economic policies laid before Cabinet? Eric Kiernas could have and would have; Paul Hellyer would have. But the rest? If you loaded the lot of them on one side of the know-how scale, couldn't Bank of Canada Governor Louis Rasminsky-all by himself on the other side- bounce them shyward?

(Continued on page 15)

## FREE ASHTRAYS

WITH ALL ORDERS OVER \$5.00

"WHILE THEY LAST"  
**CAROL DRYCLEANERS**

TELEPHONE 944-2226 - LABRADOR CITY



**Minor Hockey's Trophy Winners at the Annual Presentation of Awards held last month at Labrador City.**

**SPORTS - Continued**

Shot Put: C. Hamel, N.D.A.; G. Tibbs, A.P.L.; H. McIntire, A.P.L.; V. Corcoran, N.D.A.  
 220 Yds.: S. Christie, N.D.A.; C. Hamel, N.D.A.; C. Virag, J.R.S.; D. Mills, J.R.S.  
 High Jump: 1. A. Mendham, A.P.L.; 2. S. Baxter, J.R.S.; 3. L. Parsons, A.P.L.  
 440 Yds.: 1. V. Power, N.D.A.; 2. B. Hawkins, N.D.A.; 3. D. Starn, A.P.L.; 4. J. Hickey, N.D.A.  
 Relay: 1. N.D.A.; 2. A.P.L.; 3. J.R.S.  
 Top Individual Points: Tie. Chantal Hamel, N.D.A. 20; Susan Christie, N.D.A. 20.

**ARENA SCHEDULE**

Wed. June 2nd, Roller Skating, 8:00 p.m. - 10:00 p.m.  
 Sat., June 5th, Roller Skating, 8:00 p.m. - 10:00 p.m.  
 Mon., June 7th, Roller Skating, 8:00 p.m. - 10:00 p.m.  
 Wed., June 9th, Roller Skating, 8:00 p.m. - 10:00 p.m.  
 Sat., June 12th, Roller Skating, 8:00 p.m. - 10:00 p.m.  
 Mon., June 14th, Roller Skating, 8:00 p.m. - 10:00 p.m.  
 Wed., June 16th, Roller Skating, 8:00 p.m. - 10:00 p.m.  
 Sat., June 19th, Roller Skating, 8:00 p.m. - 10:00 p.m.  
 Mon., June 21st, Roller Skating, 8:00 p.m. - 10:00 p.m.  
 Wed., June 23rd, Roller Skating, 8:00 p.m. - 10:00 p.m.  
 Sun., June 27th, Amateur Boxing, 8:00 p.m.  
 Mon., June 28th, Roller Skating, 8:00 p.m. - 10:00 p.m.  
 Wed., June 30th, Roller Skating, 8:00 p.m. - 10:00 p.m.

**PLAYGROUND:** Visitors are reminded that bicycles are not permitted on the playground area. Many hundreds of small children are playing in this area and operating bicycles is extremely dangerous. Please park your bike before entering the playground.

**LABRADOR CITY RECREATION DEPARTMENT**

MINOR SOFTBALL \_\_\_\_\_  
 Check One \_\_\_\_\_  
 MINOR FLOOR HOCKEY \_\_\_\_\_  
 NAME: \_\_\_\_\_  
 AGE: \_\_\_\_\_  
 TELEPHONE NUMBER \_\_\_\_\_

Return to Labrador City Arena, P. O. Box 2180, L.C., on or before 12 June 1971.

**GOLF:** The Tamarack Golf Club was officially opened for the season by William Campbell, Chairman of the Board of Trustees, Local Improvement District, Town of Labrador City, on Saturday 29 May at 2:00 p.m. More info. and pictures in our next edition.

**LADIES SOFTBALL**

Readers are reminded of the Bikeathon, sponsored by the Ladies Softball League, and scheduled for Sunday, June 6th. Anyone wishing to participate is asked to call 944-3390. President Pat tells us tickets at \$25.00, for the Car Draw, are going well. All proceeds to assist this year's Ladies Provincial Softball Championship being held at Labrador City.

**NO. 1 SOFTBALL FIELD SCHEDULE**

**Weekly Schedule:  
 From May 31st  
 through June 19th**

Monday: 9:00 to 12:00 noon, Recreational Play (open); 12:00 to 3:00 p.m., Recreational Play (open); 3:00 to 4:00 p.m., Maintenance; 4:00 to 6:00 p.m., Schools; 6:00 to 8:00 p.m., "B" League; 8:30 to 10:00 p.m., ((A" League (Pract.).  
 Tuesday: 9:00 to 12:00 noon, Recreation Play (open); 12:00 to 3:00 p.m., Recreation Play (open); 3:00 to 4:00 p.m., Maintenance; 4:00 to 6:00 p.m., Schools; 6:00 to 10:00 p.m., "A" League.  
 Wednesday: Same as Monday from 9:00 to 6:00 p.m.; 6:00 to 8:00 p.m., "B" League; 8:00 to 10:00 p.m., Senior Ladies.  
 Thursday: Same as Monday from 9:00 to 6:00 p.m.; 6:00 to 10:00 p.m., "A" League.  
 Friday: Same as Monday from 9:00 to 6:00 p.m.; 6:00 to 10:00 p.m., Ladies.  
 Saturday: 9:00 to 12:00 noon, Recreational Play (open); 12:00 to 1:00 p.m., Recreational Play (open); 1:00 to 2:00 p.m., Maintenance; 2:00 to 4:00 p.m., Senior Ladies; 4:00 to 6:30 p.m., Recreational Play (open); 6:30 to 10:00 p.m., Senior Ladies.  
 Sunday: 9:00 to 10:00 a.m., Recreational Play (open); 10:00 to 12:00 noon, Senior Ladies; 12:00 to 1:00 p.m., Maintenance; 1:00 to 3:00 p.m., Senior Men's "B"; 3:00 to 5:00 p.m., Recreational Play (open); 5:00 to 6:00 p.m., Maintenance; 6:00 to 10:00 p.m., Senior Men's "A".

**SMOKEY MOUNTAIN SKI CLUB**

The Annual Meeting of the Smokey Mt. Ski Club was held on May 22 at 8 p.m. in the ski lodge. The meeting was called to order by Club President, C. Jardine, and the minutes of the last annual meeting were read by Secretary G. Krueckl. Year end reports were presented by the Directors concerning Finances, Nancy Greene League, Transportation and Accommodation, Entertainment, Races and other Events, and Membership.

It was the opinion of the Directors that the Club had experienced a most successful year, despite the lack of snow, and a decreased membership. The highlight of the season at Smokey Mt. included the Nancy Greene League which produced Labrador Trophy winners for the second year, the formation of the Granny Greene fun racing club for adults, the Iron Mug Invitational, and the Eastern Division Championships.

A summer training camp has been organized by Rene Beauchamp at the request of the Directors. Tigne near Val d'Isere has been chosen as a training location, and it is hoped that the club will be able to maintain this as an annual camp for our most promising skiers. This summer, seven racers plus coach Beauchamp will leave for a one month program.

The Directors elected for the 1971-72 season are: President, Colin Jardine; Vice President, Flip Dawson; Secretary, George Krueckl; Treasurer, Bud Perry; I.O.C.C. representative, Paul Penney; Maintenance, Al Leonfellner; Entertainment, Leo Meewis; Transportation and Accommodation, Ken Hubbard; Fund Raising, Charlie Graham. The Directors in charge of Events and Races are Gunter Swierkot and Mac McKim who are respectively, Sec.-Treas., and President of the Atlantic Division of the C.S.A.

Mr. Flip Dawson thanked the 1970-71 executive on behalf of the members.

Membership for the 1971-72 season are currently available from Mr. Dawson.

**NATIONAL PRESS**

(Continued)

It can always be argued, of course, that expertise is not necessary in a cabinet minister, that expertise can be bought. But in that case the Cabinet does not seem to know enough even to buy very good expertise.

The economy of Canada is in a mess. The highest unemployment in a decade has been deliberately induced by the Government in its war against inflation, and inflation is still with us and taking a new lease on life. The Government studies and studies and delays and delays and then in vital areas seems to tumble into ad hoc decisions without study.

Take one of the matters in which Eric Kierans has been in dispute with some members of the Cabinet-the advisability of bringing oil and gas from Alaska and the Canadian Arctic through mid-Canada pipelines to the United States.

Mr. Kierans disapproves. Minister of Energy, Mines and Resources J.J. Greene and Minister of Indian Affairs and Northern Development Jean Chretien have been trying to sell the project to every body.

We don't know, at this time, whether the pipeline corridor is a good idea or not. But one thing we do know: the Government doesn't know either. The research which was supposed to determine if pipelines could be built without serious damage to the northern environment was originally to take years and is now being compressed into months. We simply don't believe that that is possible.

In fact, we would feel safer if Mr. Kierans were inside the Cabinet, asking the questions that everybody else seems to overlook.

# Woolworth

# DOOR

**WHILE QUANTITIES  
LAST**

# CRASHERS

LADIES' SHORT SLEEVE

**BLOUSES**

**2/1.88**

NOXZEMA 14 OZ.

**SKIN CREAM**

**1.88**

9' x 12' 100% POLYESTER

**SHAG RUG**

**55.88**

JERGENS 13 1/2 OZ.  
**HAND LOTION**

**1.47**

16" MAVERICK

**BICYCLE**

**39.88**

DOROTHY REED  
**BEAUTY AIDS**

**3/1.44**

FIRST QUALITY, LADIES

**PANTY HOSE**

**2/1.50**

ANTI-PERSPIRANT,  
RIGHT GUARD 6 OZ.  
**DEODORANT**

**1.27**

BOYS' PANTS LIMITED QUANTITIES

UP TO **50% OFF**

SAMSON-DOMINION  
**KETTLE**

**6.88**

SPINNING  
**ROD & REEL**

**8.88**

MEN'S PANTS LIMITED QUANTITIES

UP TO **25% OFF**

LIGHTED  
**SMOKER**  
ASST. COLOURS

**15.88**

SOFT & DRI ANTI-PERSPIRANT  
**DEODORANT**

5 OZ. **1.37**

5 PIECE  
**CANNISTER SET**

**3.88**

DELUXE  
**BADMINTON SET**

**10.97**

**LOOK FOR THESE AND MORE EXCITING BARGAINS**