

MERIT INSURANCE COMPANY
 All Canadian Coast to Coast
 DEPENDABLE PROTECTION
 Complete Coverage
 Low Rates
 Fast Fair, Friendly Claim Service
 Our Policy is your Protection
 Labrador Representative
GORDON MANSTAN
 768 Stirling Crescent
 944-3301

A U T O

F I R E



The Aurora

The weekly newspaper of Labrador West

Vol. 2 No. 29

AURORA, LABRADOR, OCTOBER 21, 1970

PRICE 10 CENTS



Shown here are some of the winners at the recently-held presentation of prizes for the Cariboo Tennis Club. Details on this and other athletic news stories will be found in "Speaking of Sports", inside this issue of The Aurora.

Ashuanipi "Indians" "B" League Hockey Champs, '69-70, following a presentation of jackets made by the club. To the left is Mr. J. Knee, Ashuanipi Director.





Canada Choice-Red Brand Beef-Boneless

ROUND STEAK or RUMP ROAST

Tender and Juicy-Delicious!
Tendre et Juteux-Delicieux!

BIFTECK DE RONDE ROTI DE GROUPE

1.09

lb.

Boeuf de Marque Rouge-Canada de Choix.

Red Brand Beef-Canada Choice-Boneless-Well Trimmed

SIRLOIN POINT Steak or Roast lb.

1.35

Poir.te de Surlonge-Desosse-Boeuf de Marque Rouge

Fresh Every Hour!

GROUND ROUND STEAK lb.

1.05

Bifteck de Ronde-Frais Hache a chaque Heure!

ECCNOMISEZ
AVEC DES BONS
De Rabais
8" x 36"
TABLETTES DECORATIVES



SAVE WITH COUPONS!

\$1.90 OFF 8" x 36"

CUSTOM DECORATOR SHELF

(Choco-chips - Coco Pecan)

DAVID BISCUITS

Biscuits David-Brisures de Chocolat ou Pacanes

Pqt.
14 oz.
Pkg.

59¢

Assorted Colours

SYMPHONY TOWELS

Essuie-Tout Symphony

2
Roul
Rolls

61¢

Monarch

PIE CRUST MIX

Melange Croute a Tarte-Monarch

Pqt.
18 oz.
Pkg.

42¢

Domino

LIQUID DETERGENT

Deferisif Liquide Domino

Cont.
64c

1.09

Del Monte

SLICED PINEAPPLE

Ananas Tranches-Del Monte

Bte
28 oz.
tin

59¢

Dominion's Own!

COUNTRY CLUB COFFEE

Cafe Country Club

Bte
16 oz.
Tin

99¢

Dominion
FLOUR-FARINE

Dominion
Tout Usage!

sac
20 oz.
Bag **2.19**

Pepsodent (Reg. or Mint)
TOOTHPASTE DENTIFRICE

Pepsodent
Merthe ou Reg.

Format Fam.
Fam. Size

91¢



Maple Leaf Brand

RINDLESS BACON

Bacon Sans Couenne-Marque Maple Leaf

Pqt.
1 lb.
Pkg.

83¢

Maple Leaf-Economical

WAX BOLOGNA by the piece lb.

Bologne en Morceau-Maple Leaf-Economique

49¢

ALWAYS FRESH FRUITS & VEGETABLES!

FRUITS et LEGUMES TOUJOURS FRAIS!

Prince Edward Island-Canada No. 1-Winter Keeping

TABLE POTATOES

Mesh
Bag

POMMES DE TERRE

de Table-De L'Ile du Prince Edouard
Canada No. 1
Se Conservent
L'Hiver
(Sac Jute)

75 lb.

2.99

Quebec Grown Canada Fancy Grade

McINTOSH APPLES 5 lb.

89¢

Pommes McIntosh-Du Quebec Canada de Fantaisie

Quebec Grown-Canada No. 1 Tender

CELLO CARROTS 5 lb.

59¢

Carottes en Bottes - Du Quebec Canada No. 1

Nous nous reservons le droit de limiter les Quantites!
Prix en vigueur jusqu'a sam. 24 Oct. 1970
Prices effective until Saturday, Oct. 24th. 1970
We reserve the right to limit Quantities!

DOMINION STORES LIMITED



●CENTRE D'ACHATS CAROL LAKE
SHOPPING CENTRE, LABRADOR CITY
et-and ●WABUSH PLAZA, LABRADOR

On the local scene

Work on the expansion of the Wabush Shopping Plaza is progressing favorably and both Ayre's and Dominion hope to be operating in their expanded areas by Christmas. This addition will add approximately 10,000 square feet of shopping space to these stores. Plans for further expansion to house one, or more, national chains will probably proceed during the spring. This construction would take place at about the same time as the addition to Sir Wilfred Grenfell Hotel.

We noticed recently from Dominion Bureau of Statistics figures that housing starts and completions, in this area, are not included in Provincial figures. Housing construction may have been down on the island of Newfoundland and throughout the Atlantic region but it has been a boom year for Labrador City-Wabush. By year end it is expected that over 200 housing units (houses and apartments) will have been constructed here during 1970. We wonder where D.B.S. and Central Mortgage and Housing list these figures or are we completely forgotten.

Ayre's Fall Fashion show sponsored by St. Paul's Anglican Church Ladies of Labrador City, held at the Ashuanipi Social Club last week, was a whopping success. The event was a sellout and those in attendance seemed to express keen interest in the various fashions displayed. We liked the music, the placards and especially the models. Congratulations to Mr. Hounsell of Ayre's and his staff, and Mrs. Knee and her Anglican Church ladies group for making the first

fashion show of the season a resounding success.

Notice quite a number of pieces of equipment preparing the area, adjoining the Ladies Staff House, Labrador City, for the start of construction of the Carol Inn, which is scheduled to begin early in the Spring. We also have it on good authority that it has been recommended, construction on the Carol-Wabush Co-op be postponed until next spring. It seems the area selected has been backfilled only recently and there will probably be some settling of the material during spring breakup. According to latest reports approximately \$70,000 has been raised toward construction of the building.

The recent troubles in Montreal may have a direct affect on plans at Mount Wright, Port Cartier and possibly even Sept. Iles. According to a Canadian Press report, U.S. interests are taking a second look at the situation, in fact all investment in Quebec. The murder of Mr. Laporte will definitely have a detrimental affect on the business climate in that province and could very well spill over here, causing a delay and possibly a postponement of expansion plans.

The Fourth Carol Brownie Pack held a Pack Holiday under the direction of Mrs. Theresa Henry, assisted by Miss Joan Gushue, on October 2-4, in the C.E. McManus Gym. The camp was attended by seven brownies who flew up to Guides and was visited by Mrs. Ron Hardie, District Commissioner. It is hoped to have more Pack

Holidays in the near future. The Fourth Carol Brownie Pack held its annual fly up ceremony on Tuesday, October 6 at 6:30 p.m. in the C.E. McManus Gym. The ceremony was attended by Mrs. Ron Hardie, District Commissioner, the Second Carol Guide Company, parents and friends. Flowers were presented to Mrs. Hardie by mothers of Brownies flying up. The Brownies presented a gift to Mrs. Henry (Brown Owl) as a token of appreciation. The Brownies who flew up were L. Tremblay, T. Corbeil, K. Fillion, D. Mercer C. Ouellette, D. Jackman, R. White, and A. Plue. We would like to say so long and good luck to Denise Jackman who will soon be leaving us.

Eastern Provincial Airways announces a new schedule effective October 26, it will include the following changes. Depart St. John's 9:00 a.m., arrive Wabush 12:25 p.m. Depart Wabush 5:05 p.m., arrive St. John's 9:55 p.m. The complete revised schedule will be available within a few days.

Because of sufficient public response and generous financial help from the Labrador West Branch of the Memorial Alumni, it has been announced by James Dunn that a branch of the Humanities Association of Canada has been formed in Labrador West. The Humanities

Association was happy to greet their first speaker, Dr. J.C. Hammer of Memorial University, who spoke last evening in the Labrador City Collegiate Staff Room. Dr. J.C. Hammer has had a distinguished teaching career. A native of Dover, England, he was educated in England and Germany. His Doctorate at the University of Hamburg, Germany, consisted of a dissertation on the influence in England of the German romantic poet Friedrich Holderlin. His thesis was published in 1966. Dr. Hammer has lectured for the British Council in Germany, taught in England as well as Switzerland, before coming to Canada. Presently, he is teaching German at Memorial University and working on a book concerning the contemporary German dramatist, Peter Weiss. Members of the general public may join the local branch on payment of five dollars, which will cover the eight lectures, for the current year. It is planned to have speakers rotate such that during the year, there will be two speakers on each available weekday night. So, two speakers will be scheduled to speak on Mondays nights, two on Tuesday nights, etc., so that all interested parties will have an opportunity to attend a majority of the talks. The topic that Dr. J.C. Hammer dealt with in depth, last evening, was "The Creative Writer and the State". An election of officers for the local branch was also held during the meeting.

Appreciation. Carol Cubs and Scouts are very grateful for the generous support of the people

of Labrador City on their Annual Boy Scout Apple Day, October 3. (Sorry but Aurora was unable to reproduce, satisfactorily, the picture received.)

Congratulations to Mr. and Mrs. Howard March on the birth of their first baby, a son, Glenn Howard.

The annual general meeting of the Labrador West Liberal Association was held at the McManus School, Labrador City, on Wednesday, October 14, with W. Woodward, Labrador Regional Vice-President, in attendance. The following officers were elected for the ensuing year: President, E. Chaulk; Vice-President (Labrador City), W. Raymond; Vice-President (Wabush), G. Roberts; Secretary, Miss M. Holden; Treasurer, G. Crawley. Miss Holden and T. Gillespie were selected to attend the Liberal Policy Convention in Ottawa, November 20-22.

OVERWEIGHT ?

Reduce the easy Slendor Reducing Plan way. Eat three satisfying meals a day. \$2.50 and -\$6.00 sizes. At City Drugs & Northern Drugs.

Statutory Notice

In the matter of the Estate of Frederick Ross Woodward, late of Labrador City, in the Province of Newfoundland, Mechanic Foreman, deceased.

All persons claiming to be creditors of or who have any claims or demands upon or affecting the Estate of Frederick Ross Woodward, late of Labrador City aforesaid, Mechanic Foreman, deceased, are hereby requested to send particulars thereof in writing, duly attested, to Norma Woodward, P.O. Box 458, Labrador City, Administratrix of the Estate of Frederick Ross Woodward, on or before the 15th day of December, A.D. 1970, after which date the Administratrix will proceed to distribute the said Estate having regard only to the claims of which it then shall have had notice.

DATED at Labrador City this 14th day of September, A.D. 1970.

ARTHUR F. MILLER
Solicitor for Norma Woodward,
the Administratrix of the Estate
of Frederick Ross Woodward.
Sept. 24, Oct. 22, Nov. 19,



Peter J. Walsh of Wabush will carry the P.C. banner for the District of Labrador West in the next Provincial Election. Mr. Walsh received 180 of the 323 ballots cast in nominating conventions held at Labrador City and Churchill Falls. In conversation with Mr. Walsh, Aurora learned he expects to kick-off the organizational part of his campaign within the next few days. Mr. Walsh is the first declared candidate for Labrador West.

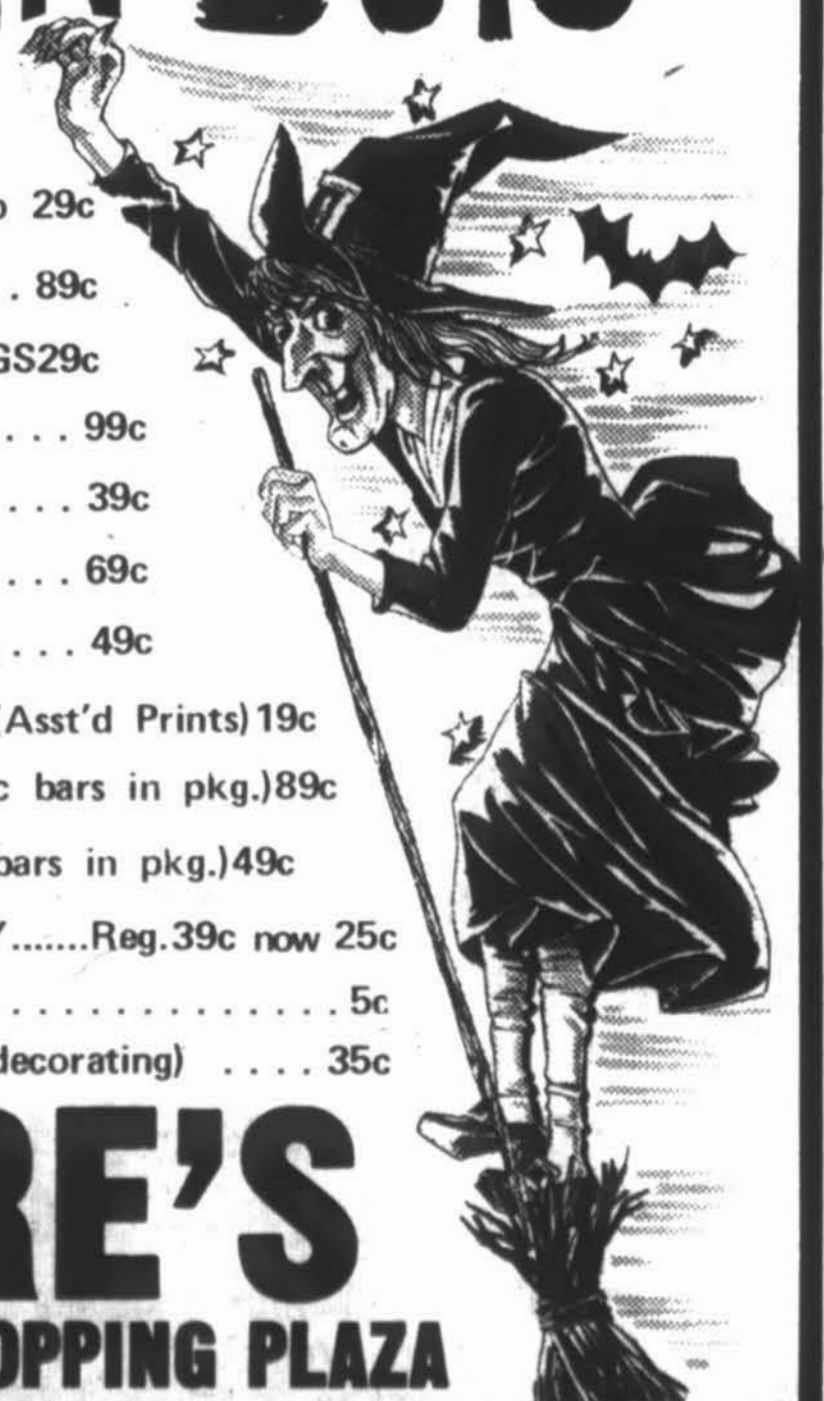
BEWITCHIN' BOYS

- HALLOWEEN MASKS 5c to 29c
- HALLOWEEN WIGS 89c
- HALLOWEEN 'TRICK N TREAT' BAGS 29c
- HALLOWEEN COSTUMES 99c
- 6" PLASTIC PUMPKINS 39c
- 10" PLASTIC PUMPKINS 69c
- HALLOWEEN BUCKET 49c
- HALLOWEEN DECOR CUT-OUTS (Asst'd Prints) 19c
- CHOC. BAR ASSORTMENT (ten 10c bars in pkg.) 89c
- CHOC. BAR ASSORTMENT (12-6c bars in pkg.) 49c
- PACKAGES OF ASSORTED CANDY Reg. 39c now 25c
- HALLOWEEN PARTY HATS 5c
- HALLOWEEN CREPE PAPER (for decorating) 35c



AYRE'S

WABUSH SHOPPING PLAZA



The Aurora

Published every Wednesday at Labrador West, Newfoundland and Labrador and printed by Robinson-Blackmore Printing and Publishing Limited, O'Leary Avenue, St. John's, Newfoundland. Subscription rate Canada and Foreign \$6.50. Mailing address, P.O. Box 2090, Labrador City.

Editorially speaking

COMPETITION AND COMMUNICATIONS

Recently the "service" provided by our "local" radio station at Goose Bay (nearly 300 miles from Labrador City-Wabush) passed from the control of C.B.C. Northern Services to the C.B.C. Newfoundland Network. According to many people an improved service, according to others a downgrading of the previous service. Well as we see it there is far more news emanating from the island and in our opinion, much to much St. John's news, at the expense of national news bulletins. Depending on working schedules, a listener may not hear world news for considerable periods, during broadcasting hours. Possibly this may be corrected with the time change next week.

However with this "so called" improved service, the "local" station, subsidized entirely by you as a Canadian taxpayer, decided to go commercial, and has been soliciting business throughout Labrador at cut rate charges; income from which would not even pay the travelling expenses of a C.B.C. junior executive, who peddle's commercial advertising in area's such as ours.

For years the C.B.C. hierarchy claimed it was not financially feasible to operate a private commercial radio station here and they were providing this service at great public expense to the Canadian Taxpayer. (Don't forget you working here were paying thru the nose for this service). But of late we see the truth of the matter. Now they want Western Labrador to pay directly to the cost of maintaining the Goose station.

Aurora is certainly not afraid of justifiable competition. We have supported the establishment of a local (in Labrador City or Wabush) Radio station for years. Since assuming the editorship of this weekly in June past, we have on several occasions, urged the matter be again investigated. Only last month in conversation with Dr. N. Murphy, President of Humber Valley Radio, we stated. Aurora was 100% behind him in his efforts to establish a local commercial Radio station HERE.

Competition is good for business, but when this "local" station supported by you as a taxpayer asks that the advertiser in Western Labrador help pay for C.F.G.B., we feel this is going too far.

We will be forwarding a copy of this editorial to C.B.C. Regional Director, Mr. Morrow and C.B.C. President, Mr. Davidson. Also forwarding copies to our Federal M.P. and the Canadian Radio and Television Commission asking them to do all in their power to hasten the establishment of a truly Local Commercial Radio Station.

For those interested we would be pleased to have your comments, written or verbal on this subject.

FIREMAN'S BALL: The Wabush Volunteer Fire Brigade has completed plans for their Sixth Annual Fireman's Ball. Tickets may be obtained from any fireman or the Wabush Recreation Centre. Tickets are also available by calling 282-3182, 282-6705 or 282-3035.

MARITIME LIFE ASSURANCE COMPANY

HEAD OFFICE HALIFAX

The Company with "Venture Growth"
the modern concept of life protection.

Resident agents in Labrador City,

Ron Brown 944-2294

Phil Lozman 944-2666

Branch Office Millbrook Shopping Centre,
Corner Brook, Nfld.

W. Roberts, Branch Manager.

Here 'n' There

WIGS: The next man who tries to pull the wool over your wife's eyes may be simply a wig salesman. A Hong Kong manufacturer has started buying wool from New Zealand and making it into wigs ("styled by a famous London Stylist") for sale in Britain and Europe. International woolmen are predicting their product could supply as much as one third of the 9,000 tons of fibre need in Hong Kong ("wig capital of the world") next year.

DEFICIT PROJECTED: The Unemployment Insurance Commission probably will have a deficit of between \$30-million and \$130 million next year, the unemployment insurance advisory committee says. The committee, in a report tabled in the Commons last week, said this should not create a problem for the commission, as the unemployment insurance has a current balance of \$460 million.

The commission had a surplus for 1969 to 1970 of \$76 million but this is less than the predicted surplus of \$125 million. The estimate was based on assumptions on unemployment that did not prove correct, the advisory committee said. Unemployment had "significantly worsened" during the year. The advisory committee said its estimated deficit for the coming year is based on unemployment being between 5.5% and 6.5% of the labour force.

PREFAB HOMES FOR HAPPY VALLEY: Atlantice Design Homes Ltd. of Stephenville, a subsidiary of Lundrigans Ltd., has been awarded a contract to prefabricate 84 semi-detached four-bedroom homes for Happy Valley, Labrador. The parent company has been awarded a contract to service the lots on which the homes are to be erected and to supply water and sewage services. The contract is valued at \$1,432,720. It is anticipated that 40 of the units will be erected before the end of this year.

DIRECT SELLING: Door-to-door canvassing accounted for 72% of the \$712.1 million worth of goods sold directly to household consumers by manufacturers and specialist direct-sellers in 1969, the Dominion Bureau of Statistics reports. Mail order sales accounted for 19%, counter sales at manufacturing plants made up 6% and other channels, including house parties and exhibitions, composed the remaining 3%.

The \$712.1 million total was up 2.1% from \$697.4-million in 1968. Annual sales through retail store locations totalled \$27.4 Billion in 1969.

THE CAR SHOW: How cool can a strike get? Earlier this month strikebound General Motors of Canada rented Oshawa's big Civic Auditorium for three days to show off its 1971 models just for the employees. Well before the start of the strike in mid-September, invitations went to all employees, including the 10,600 hourly rated workers now in strike. It was the biggest showing of new cars GM of Canada has ever held for its employees and it was, GM believes, a resounding success.

The union didn't try picketing the auditorium and according to GM, "thousands came." Some certainly were strikers, with their families, curious to see the cars they're not making.

REUSE CONTAINERS: A quick-release fastener seals and re-opens triple-corrugated board packing containers without damage. This means that the same container can be used many times. The fastener, developed by a British firm, is mold-flush-fitting so that it cannot be damaged during shipment or handling.

JAPAN LEADING SHIPBUILDER: Japanese lead all countries in shipbuilding. In the fiscal year ended March, 1970, the country launched 8.3 million gross tons, or 48% of total tonnage launched in

the world, according to the Japanese Ministry of Transport. The country's total was 2% higher than in the previous 12 months. In the same period to the end of March this year, Japan also received orders for 13.3 million gross tons (a record.) Of this total, 8.6 million tons were from abroad. The value of the ships ordered was \$2.7 billion, U.S. funds. The previous record year for orders was 1966, \$2.0 billion, U.S. funds.

The backlog in Japanese shipyards at the end of March was 19.8 million gross tons, enough work for two years. The shipyards are not without worries; Specifically; A shortage of labor. This has helped push up labor costs, one reason given by the industry for reporting a profitability rate of 4.7% compared to a 6.0% average for all Japanese manufacturing. Shipyards have been investing heavily in automated building techniques to overcome the labor shortage. There is also the possibility that the yen will be revalued upward. If this happens, it will raise the selling price of Japanese vessels. And the industry could lose revenue on any contracts written in a way that would protect the buyer of ships against revaluation.

BOWATERS: The four unions of Bowaters Newfoundland Ltd., Corner Brook mill, will seek voluntary retirement at 62 in contract negotiations with the company, which began last week. Earl Thistle, chairman of the joint unions, says the group is seeking accommodation for employees affected by automation, including higher wages and benefits for those employed, long-term disability payments and insurance. He said membership of his own local, the largest at the mill, has declined to 807 from 1,100, in recent years.

BOEING AIRCRAFT: Boeing Co. of Seattle has sold one of its 747 jumbo-jets to Japan Air Lines and a 707 to B.O.A.C. While prices are not disclosed, 747's generally sell for about \$22 million and 707's for \$9 million.



CAMPBELL'S ESSO SERVICE

ATLAS ANNUAL SNOW TIRE SALE

WINTER GRIP SAFE TIRE

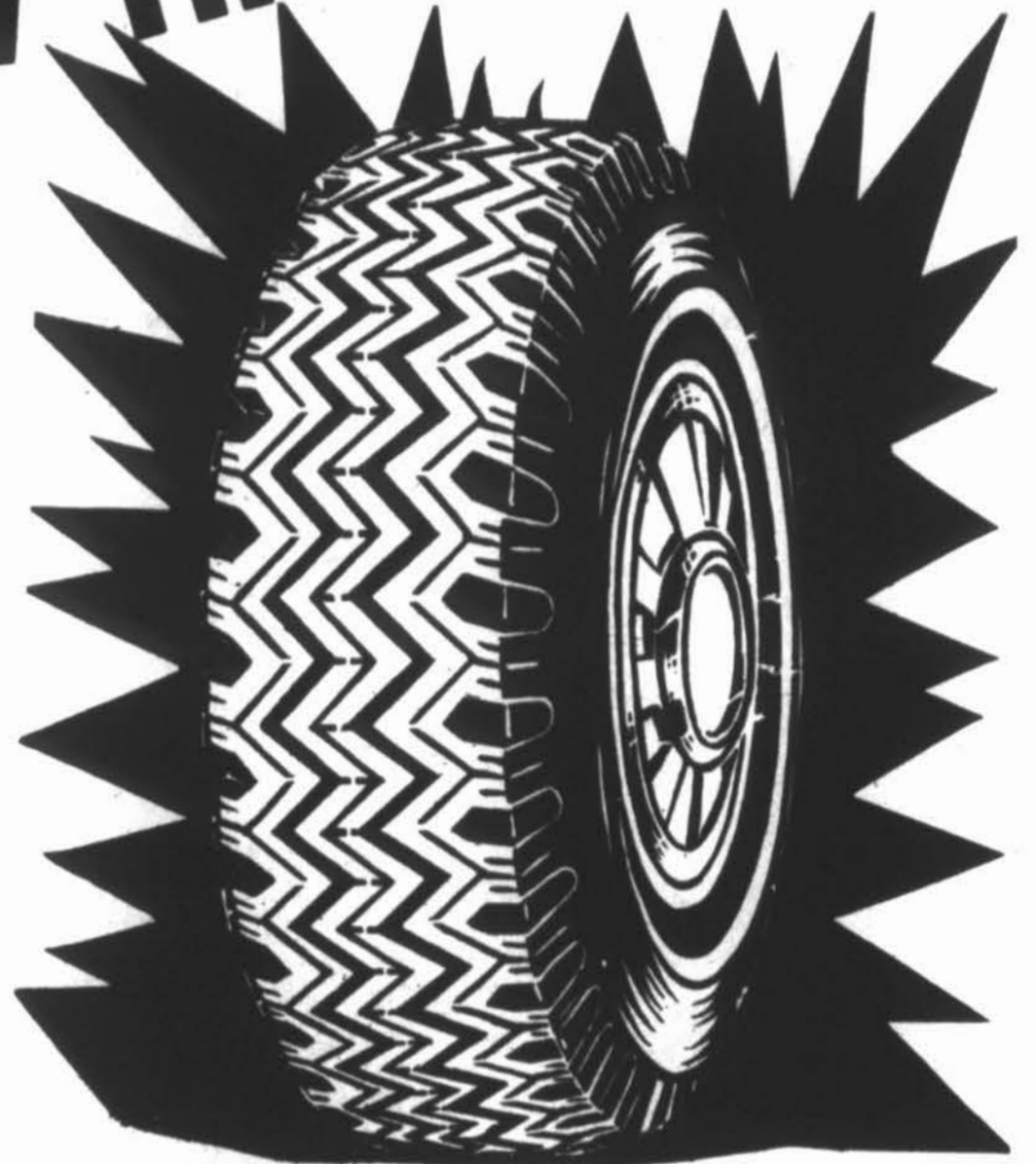
775-14

19⁸⁸

WEATHER GIARD "S"

775-14

24⁸⁸



NOW IS THE TIME TO WINTERIZE WITH ESSO-RAD ANTI-FREEZE

CAMPBELL'S IS FULLY EQUIPPED TO PROVIDE TUNE-UPS

WE HAVE THE ONLY VISUALINER ALIGNMENT IN THE AREA

REMEMBER A WHEEL OUT OF ALIGNMENT
JUST 1/2 INCH WILL SCRUB SIDWAYS
87 FEET IN EVERY MILE

**FOR ALL YOUR WINTERIZING NEEDS
SEE**

CAMPBELL'S ESSO

"WHERE THE CUSTOMER COUNTS"

What's the latest at Labrador City Collegiate?

Another school year has begun for High School students at Labrador City Collegiate and perhaps this is a good time to bring you up to date on some of the aspects of school activities. Last year was a very successful one for Labrador City

Collegiate. The examination results which were released in August were the best on the records of the school. Of the sixty students who wrote the Newfoundland Provincial Examinations, fifty-seven were successful for ninety-five

percentage of passes. The Business Education class of twenty students also wrote provincial exams for Newfoundland, and all passed, ten with honors. The grade eleven students in the French section wrote provincial



THE LIBRARY at Labrador City Collegiate. A full-time professional librarian has been added to the staff this year.

examinations from the Province of Quebec and all four of the students writing these examinations succeeded in meeting the requirements for a diploma. At this time our congratulations are extended to all the students and teachers who helped to achieve these excellent results.

Every school year always involves a certain amount of planning for future years and last year was no exception. During the Spring a committee of teachers worked very long hours to devise a timetable for this September. This new timetable was accepted by the staff as a whole and went into operation the first week of this school year.

This timetable has many features which are being used for the first time at Labrador City Collegiate. The school now operates on a six-day cycle with every day having eight forty minute periods. Having eight forty-minute periods means that school hours have changed slightly this year but this has resulted in more time being made available after school for extra-curricular activities. With this new timetable subject promotion has become a reality in most subject areas.

Another improvement in the school's operation this year is made possible by the addition of a full-time professional librarian to the staff. The library has been moved to a new location in the building to provide more space and this combined with the new library hours of 8.30 a.m. - 5.00 p.m. and 7.00 - 10.00 p.m. and a librarian who is trained to help students use the library to the full advantage, is a big step forward in library services.

Discussions began early last fall concerning the introduction of a senior matriculation program or its equivalent at Labrador City Collegiate. In March

meetings were held with representatives of Memorial University of Newfoundland and as a result, the Senate of the University granted Labrador City Collegiate approval to offer a program which is recognized by them as equivalent to their first year studies. This means Labrador City Collegiate is affiliated with Memorial University for this program. This is quite a unique situation in Newfoundland and places quite a responsibility on the shoulders of Labrador City Collegiate as a precedent is being set.

Classes began in the "University Year" program on September 14 with 37 students. The courses of study follow the same outline as their counterparts on campus at Memorial and the final exams will be set and marked at the University. Students who complete the year's work successfully will be admitted into the second year at Memorial the following year.

Many people were concerned as to the acceptance of this program by other universities, so letters of inquiry were sent out to six universities selected at random in Canada. Answers have already been received from three of these, namely, Queen's, McGill and Mount Allison universities. All state their willingness to grant recognition of this program to students who apply for admission to their institutions. Such students however, must send a letter of standing from Memorial University with their applications and Memorial has agreed to co-operate in this matter.

In summary then, the year 1970-71 promises to be an exciting one at Labrador City Collegiate with great steps being made in the improvement of educational facilities to the town.

Church calendar

OUR LADY OF PERPETUAL HELP
Rev. F. Lemire, Rev. T. Laperriere O.M.I.
9:00 a.m. - Mass
11:00 a.m. - Mass
5:00 p.m. - Mass (French)
7:00 p.m. - Mass
Weekday Masses
7:00 p.m. - Mass (Sat. Evening)

OUR LADY OF ASSUMPTION (WABUSH)
Rev. Jos. Blouin, O.M.I.
10:00 a.m. - Mass
7:00 p.m. - Mass
Weekday Masses 5:00 p.m.

PENTECOSTAL CHURCH GLAD TIDINGS
Pastor Gillett
11:00 a.m. - Morning Worship
3:00 p.m. - Sunday School
7:30 p.m. - Evangelistic Service
Tuesday, 8:00 p.m. - Prayer Meeting

Saturday, Young People's Meeting.

ST. PETER'S ANGLICAN CHURCH
Rev. W.J. Bellamy
7:15 Evening Prayer

CAROL UNITED CHURCH
Rev. Wm. Mayberry
10:30 a.m. - Sunday School (Kind. - Prim. - Inter.)
11:30 a.m. - Morning Worship
11:30 a.m. - Junior & Nursery
7:15 p.m. - Evening Worship

SALVATION ARMY
Lieut. R. Bungay
11:00 a.m. - Holiness Meeting
2:30 p.m. - Sunday School
7:30 p.m. - Evangelistic Service
Thursday, 7:30 p.m. - Band Practice
8:00 p.m. - Home League

CHRIST CHURCH (WABUSH)
Rev. J.B. Dickey
9:45 a.m. - Church School
11:00 a.m. - Morning Worship Nursery Held During Worship

Serving the United, Baptist and Presbyterian families of Wabush.

ST. PAUL'S ANGLICAN CHURCH
Rev. W.J. Bellamy
8:00 a.m. - Holy Communion
10:00 a.m. - Morning Prayer

Sir Wilfred Grenfell Hotel

Coming Four Days Only.

22 - 23 - 24 - 25 Oct.

"THE DUCATS"

Admission \$1.00 per Person.

Saturday \$1.50 per Person.

For your information

BOWATERS: The four unions of Bowaters Newfoundland Ltd., Corner Brook mill, will seek voluntary retirement at 62 in contract negotiations with the company, which began last week. Earl Thistle, chairman of the joint unions, says the group is seeking accommodation for employees affected by automation, including higher wages and benefits for those employed, long-term disability payments and insurance. He says membership of his own local, the largest at the mill, has declined to 807 from 1,100, in recent years.

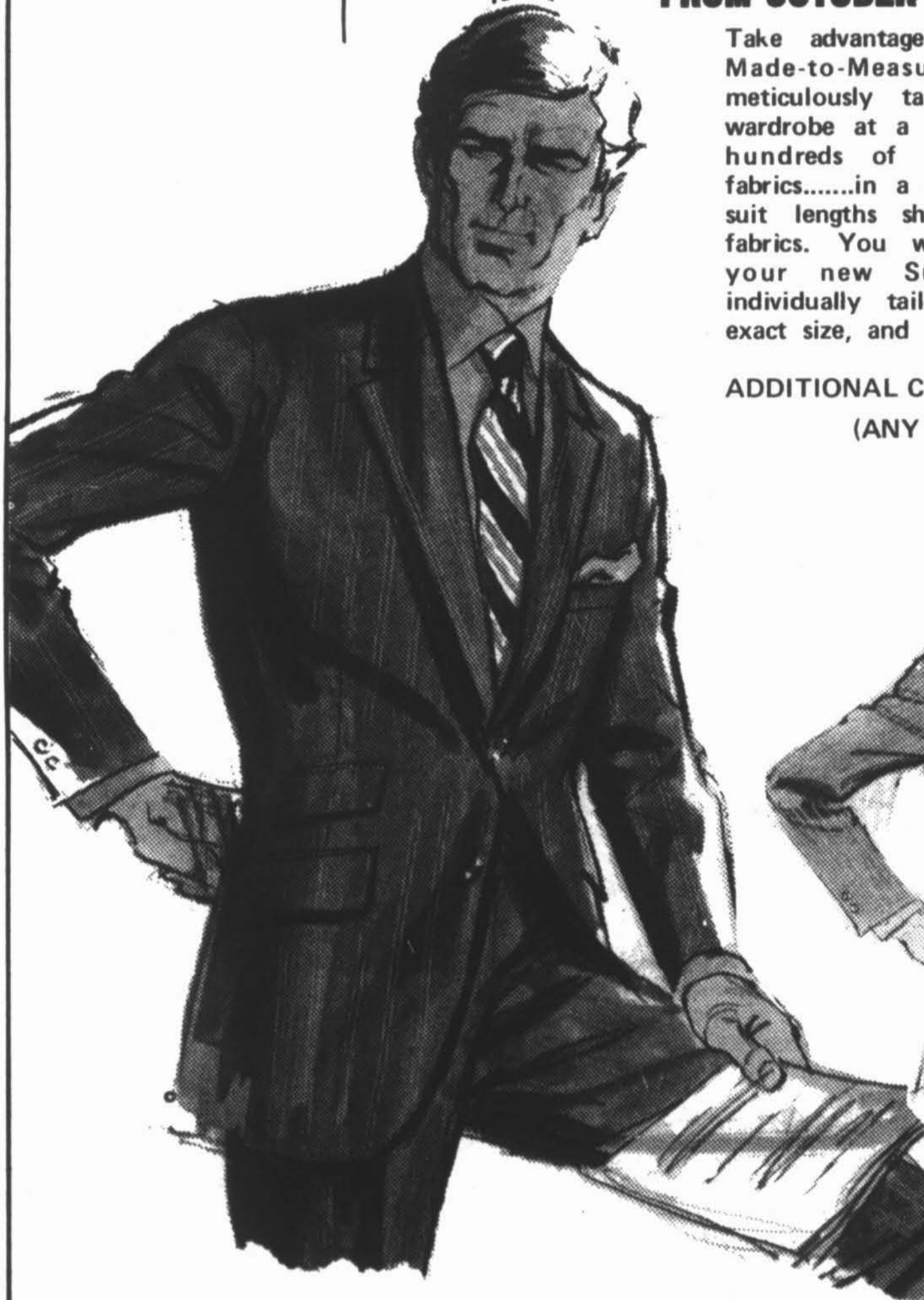
MODULAR KETTLE: A Canadian company is now manufacturing a modular electric kettle. It has three component parts; pan, control housing and lid, which snap together in seconds. With this kettle, the housewife can remove the lid easily and scour out the mineral deposits that form in the bottom of the kettles.

Other advantages: If the kettle is plugged in while empty or boils dry, the heating element will automatically turn off to prevent damage. The handle is positioned so hands do not get scalded when pouring water. The pan section is one piece construction, eliminating the possibility of leaks.

TRAWLER CREWS: The first collective agreement covering Newfoundland trawler crews has been signed by Fishery Products Ltd. of St. John's, and the Amalgamated Meat Cutters and Butcher Workmen's Union of North America. The contract covers the crews of trawlers supplying fish processing plants at Burin and Trepassey. The company operates 20 trawlers and five other plants.

SORE-MOUTH?

Amazingly quick relief for discomfort of mouth sores, white canker spots, dental plate sores, tender gums, with Fletcher's Sore-Mouth Medicine. \$1.00 at City Drugs and Northern Drugs.



**"SAVILE ROW"
Made - To - Measure
- SUIT
- EVENT**

FROM OCTOBER 22nd. TO NOVEMBER 10th.

Take advantage of this special Savile Row Made-to-Measure Suit offer to put a meticulously tailored-to-measure suit in your wardrobe at a really great saving. Select from hundreds of patterns in 100% All Wool fabrics.....in a wide colour range, also regular suit lengths showing weight and quality of fabrics. You will be expertly measured for your new Suit....and it will then be individually tailored by Savile Row to your exact size, and in the style you prefer.

ADDITIONAL CHARGE FOR OVERSIZE
(ANY SIZE OVER 46)

COAT AND PANTS. . . . \$98.50
EXTRA PANTS. . . . \$27.95
VEST \$15.95

CHARGE IT! on your
BOWRINGS A.P.A. All-Purpose
Account CREDIT CARD



BOWRINGS
LABRADOR CITY

From the national press

on guards, announce-
ial to the press in
calls.
e two victims, Jose
erto Damasa, were
treet riddled with
tied round
to a
over C

strikes
RIO DE JANEIRO
dreaded Brazilian deat
killed hundreds of p
the last two years, en
inactivity during the

EXPERIMENTS IN HOUSING: The housing industry has responded to Ottawa's experimental low-cost housing scheme with a variety of projects that prove they can do the job and turn a profit at the same time. Central Mortgage and Housing Corporation has committed about 90% of the \$200 million fund established in February. The key to the special fund was experimentation and speed. In effect, Ottawa told the industry it was willing to try almost anything that looked good. But it was also anxious to translate the money into housing starts this year to bolster the sagging housing market. As a result, the new building technology has played very little part in the program; there was not enough time to carry out the necessary research and development. Instead, most of the innovation has been in land use and financing arrangements. The most intriguing example of innovation in financing low-cost housing is a project by Victoria Woods Development Ltd., in Toronto. The developer is building 1,000 units of housing and 100,000 square feet of commercial space. The government is financing the whole thing. When it is completed, half the revenue from the commercial space will go into rent rebates on the housing. In addition, one-third of the units will be rented at a loss, one-third at cost and the remaining one-third at whatever the market can bear.

Ottawa's call for proposals yielded about 1,000 submissions. Of those, the government has approved about 150 projects in principle and over \$40 million has found its way into actual housing starts. The \$180 million committed will produce about 14,000 units of housing. Quebec and Ontario have received the lion's share of the money, over 70%, while the prairie provinces will get about 17%. The Atlantic provinces and British Columbia will get the rest.

Geography appears to be the main determinant of the kind of projects builders have been suggesting. Here is a rundown of the ways the money is being spent.

In Sydney, N.S., CMHC joined a welfare group to buy old houses in good condition and offer them to welfare mothers whose husbands are no longer with them.

Shell housing is popular in New Brunswick, Nova Scotia and Newfoundland. The builder puts up the foundation, walls and rough flooring and installs insulation, plumbing and wiring. From there, the home-owner takes the house, puts in his own partitions and finishes the house the way he wants it. In Halifax and St. John's, where land and construction costs are high, this has been

particularly popular.

In Montreal, builders offered to put up three-bedroom houses that would cost \$10,000, land included. Such houses would be within the buying range of people earning between \$3,000 and \$4,000 a year. The soft market for higher priced housing is one factor behind the low costs. The slump in housing left 1,500 builders in the city who were hungry for any kind of work.

The emphasis in Toronto has been on rental housing. The Victoria Woods project is the biggest. Others include a 250-unit high-rise boarding house which will serve as a hostel for transients, and a condominium with units in the \$5,000 income range.

Home ownership is the most popular form of tenure on the Prairies. In Alberta, a government subsidy on interest rates has helped cut the cost of some houses by about one-third.

The money is not directed solely to new housing. In Montreal and Toronto, CMHC is also experimenting with ways to fix old houses that have fallen into disrepair, either because a landlord will not fix them or because he cannot afford to. Although most of the innovations have been connected with land use and financing, CMHC officials say they have run across some new ideas in building systems that have not yet reached the market. Because they are not used in projects this year, the corporation gave their proponents encouragement but no cash. It will be another one to three years before Ottawa can begin to assess the value of the projects. Some may turn out to be duds, but officials feel they are just as likely to come out of the experiment with a few projects that can be used as models for large scale developments. They are happiest about the reaction of the housing industry and provincial and municipal governments. There has been some feeling that the industry spent the 1960s catering to only the top fifth of the market. When the boom ran dry, it was not prepared to move into building houses for low income earners. As Ottawa sees it, the special fund challenged the builders to recognize the market for lower cost housing and try to fill the gap. The industry took up the challenge, aided by co-operative provincial and municipal governments, and, as one expert noted pointedly, "none came up with a loss."

SLIGHT INCREASE IN CAR PRICES: Many 1971 model cars sold in Canada will be more expensive than the comparable 1970 models but the increases appear

generally favorable in comparison with changes in the consumer price index. Average suggested prices for manufacturers' lines range up to about 3% more than 1970 prices and there were some price cuts. The auto makers also say they have added new equipment, to comply with new safety and emission-control standards, and cost increases are greater than price changes reflect. The consumer price index compiled by the Dominion Bureau of Statistics increased by 2.8% during the latest 12-month period. Importers of foreign-made cars say change in their price structures were moderated by the increase in the value of the Canadian dollar in relation to other currencies.

Ford Motor Co. of Canada Ltd. said the prices of its 1971 models were increased by about 3%. The United States parent corporation announced last week a slight upward revision of previously-announced prices. A spokesman for Ford of Canada said it is still studying its price structure and there may be changes.

General Motors of Canada Ltd. increased its prices by an average of 1.6%. The price for models with average optional equipment went up 2.1% compared with comparably-equipped 1970 models.

Chrysler Canada Ltd. cut the average price, except for compacts, by 0.5%. The average price for compacts went up 2.2%.

American Motors (Canada) Ltd. announced an average increase of 1.9%. The price of its basic Gremlin, which came out in the middle of the 1970 model-year, was unchanged, while the larger four-passenger Gremlin increased in price by 1.1%.

Volkswagen Canada Ltd. increased its average prices by about 1.5%. Prices of Volkswagens in Germany went up by about 3.5%.

Canadian Motors Industries Ltd., distributors of Toyota, did not make any price increases. Hector Dupis, director of the company's sales division, said some price increases had been planned but were not implemented when the Canadian dollar was freed and subsequently rose.

The dollar, until June 1, was pegged by government action at 92.5 cents U.S. and traded on international currency markets at within 1.0% of the pegged value. The government allowed the dollar to float free and recently it has traded at about 97.5 cents U.S.

Car manufacturers, when averaging suggested price increases, generally deal with weighted averages to account for different sales volumes for different models.

Ashuanipi Social Club

"Casino Night"

Wednesday 28 Oct.

Time 8:00 P.M.

Sponsored By The Ashuanipi Athletic

Association Proceeds To Assist:

"Braves" - "Indians" & Darts.

For your information

WABUSH LIBRARY: Hi! Are you leaving Wabush? Or moving house? Have you any books you don't want? (Hard or Soft covers). Place them where they can do the most good, in **WABUSH REGIONAL LIBRARY**. For pick up service phone 282-6821 or 282-3479.

LIBRARY: The following hours are now in effect:

Monday-Wednesday-Thursday. 7.00 p.m. to 9.00 p.m.

Tuesday - Friday. 2.00 p.m. to 5.00 p.m.

Saturday - 10:00 a.m. to 1.00 p.m.

FINISH HIGH SCHOOLS: At home in your spare time. The fastest, cheapest and most convenient way to complete Grade Eleven Matriculation. The National College also offers Business Courses: Accounting, Bookkeeping, Business Administration and Secretarial Courses. Prepare to write the Provincial Public Examinations. For further information call 944-5207.

KULE-TOPS: The Kule-Tops Club meet every Monday night at the Wabush Recreation Center. Time 8.00 p.m.

CATHOLIC WOMEN'S LEAGUE: The Catholic Women's League of Wabush will be holding their regular monthly meeting October 25th in the R.C. Church basement at 8.00 p.m. This meeting is being held in place of the regularly scheduled November meeting. All members are requested to attend.



MORE TRAVEL AT HOME BY CANADIANS: Despite an economic slump and high unemployment, people still want to get away from it all and take a summer vacation. However, a Cross-Canada Survey by the Canadian Press showed a trend to cheaper vacations as people spent less time and money on their holidays in the summer just past.

The number of tourists visiting most provinces was slightly above last year. However, statistics compiled by the Canadian Government Travel Bureau show that the tourist business has increased by 10% a year for the past ten years. Two bright spots were the cities of Montreal and Toronto, where hotels and visitors' bureaus reported business was booming. Prince Edward Island was the only eastern province to report it was maintaining the 10% growth in tourism but Manitoba, where centennial celebrations were the big attractions this year, was leading the West with what tourist officials forecast will be a 30% increase over 1969. But in neighbouring Saskatchewan, tourism was down.

Tourism kept pace last year in British Columbia and Alberta, as in Ontario and Quebec, while the Atlantic Provinces showed an overall slight increase.

But just about everywhere there were more campers and tent-trailers on the roads, meaning Canadians were looking to camping to beat motel and hotel costs. In British Columbia, the provincial ferry system reported a 20% increase in the number of trailer and camper units boarding its vessels. Increases were also reported in the purchases of camping units in Alberta and Saskatchewan. In

Ontario, an official of the government tourist bureau said there has been a growth in campsites while business at resorts and tourist homes has fallen off. One Toronto camper dealer said his sales were up 25% although rentals decreased. The opposite was true in Ottawa where camper sales were down due to "tight money" but rentals were brisk. Quebec also reported steadily increasing sales in camping units and an increasing number of campsites throughout the province. The Atlantic provinces also went along with this trend.

GERMANY'S BLUE LAWS: For the visitor to Germany shopping hours may pose a problem. "Order is half of life," goes an old German aphorism. In some cases, that leaves the other half to be filled with frustrations. The country that invented the delicatessen has none practicing its major virtue, being open most of the time. Weeknights, German stores close at 6:30 p.m. Saturdays they close at 2 p.m., except on the first Saturday of each month when customers can shop until 6:00 p.m. The squeeze leads to what some Germans call the "Saturday Olympics" in supermarkets, and hit-and-run accidents in aisles crammed with speeding shopping carts. On Sundays, stores are left to cats and mice.

All this order is imposed by Germany's most controversial law. Oddly, it was not passed until 1956. Before then, customers could browse and buy until 7:00 p.m. every night except Sunday. The Association of German Retailers, aided by unions that thought sales clerks were being exploited, sneaked

the new bill through the Bundestag when many members were absent. The vote was 153 to 123, out of a possible 493 votes. After 14 years of doors closed in their faces, many Germans are advocating repeal. Recently, the big picture magazine Stern lampooned the regimentation of shoppers, and the plain fact is that a third of German housewives wangle food out of their local grocers after hours. "This law is something out of the horse-drawn trolley car era," says Josef Wickern, chairman of Comelius Stoessgen, a Cologne-Bonn supermarket chain. Instead of throwing them out at 6:30, Wickern's stores advertised that its customers could "get inside by 6:29 and we'll let you do your buying in complete peace." That got him hauled into court, but surprisingly he won, getting some 45 minutes more for his customers. German customers are far worse off than those of other European countries. Big stores in Paris stay open late one night a week and operate all day

Saturday. Little charuterries and patisseries in France often open Sunday mornings to peddle their sausage and pastries. In Belgium, most shops must simply close for 24 hours once a week. Many a Brussels housewife buys her Sunday roast only minutes before popping it into the oven. The butcher will deliver it via bicycle or motorcycle.

Still, many Germans seem to prefer order over ease of living. Says Herbert Tessar, spokesman for the Association of German Retailers: "We believe the mass of customers accept the closing law." Tessar claims that Germany's 450,000 retail outlets are short of 100,000 sales people. And he claims 300,000 more sales clerks would be needed if the law were liberalized. The law's most vocal opponent, the Association of Consumer Societies, released its own survey recently and apparently stumbled and fell on its own sword. Its researchers conducted a study on whether consumers felt they had

sufficient time to purchase a broad variety of items, ranging from food to bedsheets. Only one in five avowed discontent. But there are ways around the law, even in Germany. Vending machines now line the streets like al fresco automats dispensing everything from wine to flowers. A pocketful of change is the prerequisite, and a 50-pfenning coin will come up with such weird combinations as a soup cube and a pack of bubble gum. Small groceries often furtively flout the law like speakeasies, though the obliging tradesmen expose themselves of fines up to \$300. Spas and recreation areas get relief in the form of later closing hours, as do stores in railroad stations, if the train schedule is heavy. Local authorities can grant special exemptions in the name of public interest, a loophole used by Hamburg to keep business flourishing in its red-light district. There, 28 businesses ranging from pornography shops to clothing stores can stay open until midnight.

our Invitation to...

Fall Fashion Opening



BOYS' COATS & COAT SETS

Rough and ready boys' look their Sunday School best in quality coats and matching hats, of wool, Herringbone tweed and Persian. Brown, green and grey, in sizes 4 to 6x.

\$21⁰⁰ to \$30⁰⁰

JUST SAY CHARGE IT!

Arthur's
WABUSH PLAZA

ARTHUR F. MILLER

AVOCAT - LAWYER

SHOPPING CENTRE MALL

LABRADOR CITY

OPEN 9:00 a.m. - 5:30 p.m.

PHONE MONDAY THROUGH FRIDAY 944-5909

Home-owners' ad column

FOR SALE: 1967 Plymouth 4-door Sedan. 225 cu. in. engine. Automatic transmission. Engine recently overhauled and conversion made to manual choke. New exhaust system. In good condition. Phone 944-5249.

FOR SALE: Phillips (4) Track Tape Recorder. Also Stereo Component Stand. Phone 944-5706 or 944-5433.

FOR SALE: Dodge automobile. Dual exhaust. Mag wheels. Blue exterior. For further information call 944-2598.

FOR SALE: 1969 Volkswagen in excellent condition. Only 3,000 miles. Phone 282-5336.

FOR SALE: Boys skates. Size 12. Worn only twice. Too small for present owner. Phone 944-5604.

FOR SALE: One crib & Mattress. Also one posture-mattress and support (like new). For further information phone 944-2972.

FOR SALE: Sony T.C.-521, 4 Track-Stereo Tape Recorder. Also complete Kodak 8 m.m. Camera outfit. Phone 282-3144.

FOR SALE: 1963 Pontiac Convertible, 2-door. Completely reconditioned. For further information phone 944-2391.

WANTED: To buy. Extra small hockey togs for enthusiastic hockey player, who reaches for the top. Phone 944-5417.

WANTED: To rent. Basement apartment. By couple with one child two years old. Phone J. Emond. I.O.C.C. Personnel Dept., 944-8327.

NOTICE: The Carol Boy Scout Group urgently requires used uniforms of all sizes. Persons with uniforms available please call Joe Sheppard at 944-5885.

LOST: One hub cap for 1968 L.T.P.T. Station Wagon. Reward offered. Phone J. Masters, 944-2531.

LEGAL CARD

DAVID B. SPARKES

Lawyer - Advocate

Shopping Centre Mall

OFFICE HOURS: - 9 to 12 and 1:00 to 5:00
Telephone 944 - 5948 (Residence).
944 - 5555 (Office).

Phone
282-6877
or
282-6632

WESTLAB

FOR ALL YOUR FAVOURITE BEERS

India - Black Horse - Labatt 50
Molson's Export - Dominion
Blue Star - O'Keefe
Molson's Canadian



Home Delivery Service:
Monday to Saturday 1 p.m.
to 9 p.m.

Warehouse Pick-up Service:
Monday to Saturday 9 a.m.
to 9 p.m.

Telephone orders taken
Monday to Saturday 9 a.m to
9 p.m.

We have recently installed
Cooler Service permitting us
to provide our customers
with chilled beer at all times.

282-6877 or 282-6632

Recreation consultant

The Honorable Dr. F.W. Rowe, Minister of Education and Youth, wishes to announce that Mr. Gratton Sheely, formerly a field worker with the Physical Fitness Division, Department of Provincial Affairs, has returned from Post Graduate Studies in the U.S.A. and is now employed with the Physical Education and Youth Division, Department of Education and Youth, as Community Recreation Consultant. In future, recreation commissions and committees are requested to direct enquiries as follows:

Mr. Gratton Sheely,
Community Recreation
Consultant,
Physical Education
and Youth Division,
Department of Education
and Youth,
Confederation Building,
St. John's, Nfld.

Phone 722-1435-6-7

Social calendar

ASHUANIPI SOCIAL CLUB
October 22 - Darts Night at 7:00 p.m. Followed by Movie, "Five Card Stud" at 10:00 p.m.
October 23 - Movie "Decline and Fall of a Bird Watcher"
October 24-25 - Dancing to the music of the "Iron Drum"
October 26 - Movie "Naked Prey"
October 27 - Games Night
October 28 - Casino Night

R.C.L. No. 47 LABRADOR CITY

October 22 - Dominion Darts
October 24-25 - Dancing to the music of the "Newfoundland Showband"
October 28 - Games Night at 8:30, followed by dancing to the music of "Newfoundland Showband"

O'BRIEN HALL
October 22 - Games Night
October 23 - Dance and Installation of K. of C. officers
October 24 - Industrial Hockey League Banquet
October 25 - Games Night & Skidoo Draw
October 28 - Dominion Darts

**R.C.L. No. 57
WABUSH**
October 24 - Dancing to the music of the "Good Life"
October 25 - Mixed Darts at 1:45 p.m.
Games Night at 8:30 p.m.
October 26 - Dominion Darts at 7:00 p.m.
October 27 - Games Night at 8:30 p.m.
October 28 - Movie "Golden Girl"

**SIR WILFRED
GRENFELL HOTEL**
October 22-25 - "The Ducats" Newfoundland's leading entertainment group
October 26-27 - Movies

The lighter side

NO PROBLEMS: A hippie wrote home to his parents: Things are awful. Haven't a thing in the refrigerator. Didn't pay the rent. Landlord is throwing my wife and baby out onto the street..... Then he took another drag of his cigarette and added, 'If there's anything you need, just let me know.....'

KNOWLEDGEABLE: The husband came home unexpectedly, in the middle of the afternoon, and found his wife in bed with his best friend.

"Ah-ha!" he cried. "Now I know everything!"
"Oh yeah?" his wife said. "When did Sir Francis Drake defeat the Spanish Armada?"

PERFUME: Girl: "What is this perfume called and how much does it cost?"
Salesgirl: "It's forty dollars an ounce, and it's called 'Maybe.'
Girl: "At forty dollars an ounce it's got to be 'Positively'!"

INSURANCE: 1st business man: "I just collected \$5,000 from my insurance company because of a fire in my store."

2nd business man: "That's nothing. I just collected \$50,000 from insurance company because of a flood in my store."
1st business man: "No kidding? How do you start a flood?"

PERFECTION: He was seated at the bar and noticed this very luscious blonde sitting alone down at the other end. Finally, after several belts, he got up his courage and wandered down and took the barstool next to her.

"How about coming up to my place baby?" he asked thickly.
"I am sorry, sir," she said, "but I don't go to men's apartments with perfect strangers."

And he muttered, "Who the hell said I was perfect?"

NATIONALITY: The teacher asked her pupils what nationality they were. One kid said he was Irish. One kid said he was French. One said, "My momma told me I was Caesarian."

THE OFFICE PARTY: Just before the bank opened for business, two robbers with guns forced their way in and commanded the employees to take off all their clothes and lie face-down on the floor. They complied, except that one very pretty teller took off her clothes and got down on the floor face-up. "Face-down, Mabel," her girl friend hissed at her. "This is a holdup, not an office party."

THE VISITOR: A man with a little black bag knocked at the front door. "Come in sir, come in," said the father of fourteen children, "and I hope to goodness you're a piano tuner."

RELATIONSHIP: A college professor doing research in a poor mountain section of the country asked a hillbilly father if he practiced incest. The old man drew back in anger. "What do you think I am?" he demanded. "Some kind of degenerate fooling around with my daughter? Besides, my son Luke and me are practically engaged."

GREETINGS: A smart young minister abandoned the idea of shaking hands with his parishioners at the end of the service. Instead, he went outside and shook hands with parents in cars waiting to pick up their children from Sunday School.

THE MAID: A young executive brought his boss home for dinner. A woman met them at the door, took their coats and hats, and disappeared with a word. "Is that your wife?" the boss asked. "Would I have a maid that ugly?" the man asked.

FROM MR. FISH, LONDON BOUTIQUE OWNER: "Throughout history the most virile of men have worn skirts or robes.....trousers are a Victorian invention that goes with a rigid mind."

WEDDED BLISS: The lawyer came to congratulate an old friend on celebrating his Golden Wedding anniversary.

"You bum! the old man shoulded. "You're some friend!"
"Why?" the lawyer protested. "What did I do?"
The old man said, "Remember fifty years ago, on my honeymoon, I wanted to kill my wife and you talked me out of it? Well, I would have been getting out tomorrow!"

THE B & J LUMBER CO. LTD.

BUILDING MATERIALS

WABUSH INDUSTRIAL PARK

Phone 282-6617

FREE DELIVERY

P.O. 1108



Speaking of Sports

HOCKEY: This season's "A" League will have 3 teams. The Braves, Saints and Grenfell Huskies. The Braves are sponsored by the Ashuanipi Athletic Association and are coached by Reg Pottle. According to Coach Pottle he has been disappointed by the poor turn-out-for practice, to date. The team is still seeking players and several positions are open. The Saints are sponsored by Real St. Marie and are coached by Hubert Hynes. Coach Hynes reports his team is shaping up well and are ready for their opening game. The third team, a new name in local hockey, are the Grenfell Huskies, sponsored by the Sir Wilfred Grenfell Hotel and are coached by Barry Cloutier. Coach Cloutier is very optimistic on his team's chances of copping the league title. He noted the team has three strong forward lines backed by a good defence and strong in goal. So all in all, it looks like a good season ahead with 3 well balanced teams. Opening game is scheduled for Sunday, October 25 at 7:30 p.m.

The "B" League will also consist of 3 teams. The Indians, Wabush and Juniors. Opening game for this league is set for Friday, October 30, at 8:00 p.m. We hope to have more information on the teams for our next edition.

MINOR HOCKEY: The Mosquito Division swung into action last week. The league has 6 teams. Schedule for the coming weekend is as follows: Friday, October 23, at 4:45 p.m., Blues vs Hawks; Maple Leafs vs Huskies. Friday, October 23, at 5:45 p.m., Penguins vs North Stars; Maple Leafs practice. Saturday, October 24, at 10:00 a.m., Huskies vs Blues; Hawks vs North Stars. Saturday, October 24, at 11:00 a.m., Maple Leafs vs Penguins; North Stars practice. The following is the current roster of the Mosquito League.

Team No. 1 Blues: R. Myles, D. Chaulk, F. Walsh, M. Maurice, G. Homer, G. Blake, G. Austin, K. Cook, R. Costigan, W. Dove, S. Felker, R. Hicks, J. Mercier, K. Porter, D. Sumner, S. Welling, T. Mudge.

Team No. 2 Penguins: G. Pittman, M. Pittman, F. Power, N. Peckham, C. Pike, M. Decker, F. LeDrew, B. Rodgers, L. Drover, J. Dunphy, J. Follett, D. Lodge, F. Mills, M. Reilly, G. Sutherland, J. Sutherland, C. Ste. Marie.

Team No. 3 North Stars: J. Boland, D. Whitten, M. Murphy, H. Pittman, R. Leonard, C. Leonard, G. Hiscock, R. Cheater, T. Olson, L. Manning, I. Goulding, C. MacEachern, D. Mullaly, J. Tobin, G. Whitten, R. White, D. Todd.

COACHES: R. Mudge, S. Squires, A. Pittman, M. Murphy, G. Rose, L. Wicks.

Team No. 4 Maple Leafs: J.T. Bartlett, B. Lake, T. Hopkins, B. Hall, M. Byrne, P. Pitcher, J.G.

Bartlett, H. Chambers, G. Mayo, D. Hancock, D. Gullage, R. Jenkins, R. O'Driscoll, F. Penney, T. Granter, K. Mercer. Team No. 5 Hawks: C. Bouldreault, T. Bullen, J. Tobin, G. Brennan, M. Davis, T. Lawlor, L. Hammond, S. Squires, S. Brinelle, M. Farr, T. Gullage, W. Ledrew, A. Paananen, A. Dumais, B. Loranger, R. Pantry, O. Tucker.

Team No. 6 Huskies: V. Barnes, K. Dicks, K. Brinston, K. Hayward, D. Hayward, B. Hiscock, R. Hiscock, G. Hoyles, S. Hunt, L. Janes, N. Kent, R. March, S. Peddle, T. Tilley, M. Todd, C. Porter.

COACHES: C. Brown, J. Myers, L. Deschesnes, S. Williamson.

Team rosters for Pee Wee, Bantams, and Midget-Juvenile will be published in subsequent issues of Aurora.

All squads will be reviewed early in November and if necessary changes will be made to balance the teams.

An all star team will be selected in the three junior sections and will play in a higher division.

Pee Wee Schedule: Friday, October 23, at 6:45 p.m., Wings vs Canucks.

Saturday, October 24, at 9:00 a.m., Canadians vs Canucks.

Tuesday, October 27, at 5:00 p.m. Canadians practice.

Tuesday, October 27, at 6:00 p.m. Kings practice.

Bantam Schedule: Friday, October 23, at 7:45 p.m., Seals vs Flyers.

Saturday, October 24 at 8:00 a.m., Flyers practice.

Sunday, October 25 at 5:00 p.m., Seals practice.

There will be two teams involved here until the Pee Wee all stars are selected to make a third team. They will be known as the Royals.

Midget-Juvenile Schedule: Sunday, October 25, at 5:00 p.m., Saints vs Carol Cleaners.

Monday, October 26, at 4:45 p.m., Carol Cleaners practice.

Monday, October 26, at 5:30 p.m. Saints vs Rangers.

MEN'S BROOMBALL: Results of the first night of play: Raiders 3 - Aces 2; Rangers 4 - Hawks 2; K. of C. 2 - Apollo 0; Bears 3 - Lambs 1.

This league plays at the Labrador City Arena every Monday night.

INDOOR SOCCER: Junior High (Girls). Latest team standings: P-W-L-T and Pts: N. D. A. 4-2-2-0-----6; A.P.L. 3-1-1-1-----4; J.R.S. 3-1-1-1-----4. N.B. 3 points are awarded for a win.

Next games will feature J.R.S. vs A.P.L. on October 21; A.P.L.

vs N.D.A. on October 23.

Boys' Junior Soccer: Latest team standings: P-W-L-T and Pts: J.R.S. 5-3-0-2-----8; N. D. A. 4-2-1-1-----5; A.P.L. 5-0-4-1-----1.

Playoffs between the 1st and 2nd place finishers will take place between October 26-30.

Boys' High School Soccer: Latest team standings: P-W-L-T and Pts: L.C.C. 5-3-0-2-----8; J.R.S. 5-0-3-2-----2.

Girls' High School Soccer. This is a best 4 of 7 series and at this writing L.C.C. leads J.R.S. with 2 wins and a tie in the three games played to date.

AURORA, LABRADOR. OCTOBER 21, 1970 - 11
FIGURE SKATING: Mr. Allan Davidson, professional instructor, arrived on October 17 and will be in the area until October 31, after which he will visit Schefferville, returning here on November 15.

BASKETBALL: Games are played at the A.P.L. Gym each week as follows: Tuesday from 7:00 - 9:00 p.m. and Thursday 7:30 - 9:00 p.m.

CURLING: The new compressor has arrived and ice-making will begin shortly.

SKATING: For parents and tots, Tuesday and Thursday, 10:00 - 11:30 a.m. The professional skater will be available, to offer assistance, during the last two weeks of each month.

PUBLIC SKATING: This schedule is now in effect: Wednesday, 8:15 to 10:00 p.m.; Saturday, 1:15 to 3:15 p.m.; Saturday, 8:15 to 10:00 p.m.; Sunday, 2:15 - 4:00 p.m.

The club has a full membership of 125 members, divided into 5 age groups. The first exhibition of the season will be held in conjunction with the U.S.W.A. Xmas Party on December 12. The annual club show will again be held in April. Judges from the Canadian Figure Skating Association will be visiting during the season to rate skaters. Four local instructors have been rated by the C.F.S.A. and they will be conducting a battery of National Tests during the coming months.

BOXING: A boxing card has been arranged for the Labrador City Arena, Sunday, November 1, 1970. We hope to be in contact with Terry Hayward within the next few days and should have more details for our next issue.

The Labrador City Recreation Commission advises that some time is still available for Arena bookings. For further information call 944-5277.

our Invitation to...

Fall Fashion Opening

GIRLS' COATS

The belted Midi and double breasted Safari give sweet little ladies' the total look for fall. Fashioned from Vistram, Tweed and Melton in red, tan, beige, navy, green, grey and walnut. Sizes 4 to 6x.

\$23⁰⁰

to

\$30⁰⁰



Ayre's
WABUSH PLAZA

Mining news

IMPROVED TRANSPORT HELPS MINING IN NWT:

Improvement of transportation by road, air and water has been a major factor in increasing production and interest in the Northwest Territories mining. Mining production now exceeds \$120 million a year. Lead and zinc are the leading metals, accounting for approximately \$100 million of the Territories' total production.

Pine Point Mines Ltd. (a subsidiary of Cominco Ltd.) is the biggest individual contributor at a rate of 8,000 tons of ore milled daily, a 3,000-ton addition to its concentrator capacity having been completed in 1968. It is a lead-zinc producer.

Five gold mines are in production, Giant Yellowknife Mines Ltd., Con-Rycon and Vol Mines Ltd. (operated by Cominco), Supercrest Mines Ltd. and Lolor Mines Ltd. The major gold producer is Giant Yellowknife. All these are at Yellowknife.

In tungsten, Canada Tungsten Mining Corp. is the only active operation, with a 350-ton mill 125 miles north of Watson Lake. Echo Bay Mines Ltd., a silver-copper operation, at Great Bear Lake, is owned by International Utilities Corp., Toronto. Terra Mining & Exploration Ltd. is operating a silver-copper property in the Camsell River area, 30 miles south of Port Radium on Great Bear Lake.

Many companies have been participating in development. Newconex Holdings Ltd., based in Toronto, has been planning production of its lead-zinc property in the Pine Point area, held by Buffalo River Exploration Ltd., Conwest Exploration Co. and Central Patricia Gold Mines also have share interests in Buffalo River.

Claim staking has been steadily increasing in the Territories, and the number of claims recorded has doubled within the past three years, several millions of dollars having been spent on exploration in the Coppermine River area, where

Coppermine River Ltd. has been leading the way. Among other companies involved are Bernack Coppermine Exploration Ltd., Rose Pass Mines Ltd. and Hearne Coppermine Exploration Ltd.

Transportation costs have been a deterrent in the Coppermine area, but co-operative action in a large scale geophysical survey is an example of how the problem of access is being surmounted. A new means of transportation in some areas of the Territories has been introduced by Pacific Hovercraft Ltd., whose machines have expedited delivery of personnel and supplies. Helicopters have been an important factor in opening up areas for the Muskox Syndicate, in which several large companies have an interest. Copper is the main target. Grandroy Mines Ltd. has been one of the independent companies using helicopters effectively.

Yellowknife Base Metals Ltd., a subsidiary of Consolidated Manitoba Mines Ltd., has also been active in the Pine Point area. Geological surveys have

been made by Discovery Mines Ltd. Near Indian Lake in quest of gold, and Selco Northern Ltd. has been interested in gold showings at Eric Lake. Among the companies active in exploration for uranium are Hogan Mines Ltd., Eastern Mackenzie Syndicate, Hanna Gold Mines Ltd. and N.H. Ursel Associates on the Melville Peninsula. A new nickel mineralized area has been explored by Newmont Mining Corp. near Artillery Lake, 250 miles east of Yellowknife.

takeovers of Canadian companies and would also be concerned with foreign-directed investments in Canada. The committee proposes that guidelines be established for international unions to encourage Canadian members to seek increased autonomy.

The purchase of a 51% interest would depend upon the availability of Canadian capital and the willingness of Canadians to buy shares of foreign subsidiaries. It was indicated that if a company offered its shares to Canadians who failed to buy them the company would have complied with its responsibility in trying to reach the 51% target.

The committee endorses the idea of a Canada Development Corporation which has been approved by the Cabinet and is to be introduced in Parliament this fall. This company would be used as a vehicle to finance new projects and to purchase investments in existing companies. Mr. Wahn said that while Canadians reject anti-Americanism they want policies that recognize the problems, protect Canada's national interests, and encourage to the fullest extent the development of Canada's economic potential.

RESTRICTING FOREIGN OWNERSHIP PROPOSED:

Subsidiaries of foreign companies operating in Canada should be owned 51% by Canadians. That is the recommendation of a Commons committee under the chairmanship of Ian Wahn. No time limit was set when subsidiaries should reach the 51% target, but Mr. Wahn indicated it would be sought first in specific instances where it would be most important.

The committee also proposed establishment of a Canadian ownership and control bureau to supervise foreign-controlled industry. This bureau would issue permits for foreign

Labrador television guide

THURSDAY, OCT. 22

- 1500 - Mr. Dressup
- 1530 - Edge of Night
- 1600 - Take 30
- 1630 - 55 North Maple
- 1700 - Banana Splits
- 1730 - Bobino
- 1800 - La Boite
- 1830 - Arthur & Square Knights
- 1900 - Bill Cosby
- 1930 - Nature of Things
- 2000 - Cher Oncle Bill
- 2030 - A la Branche D'Olivier
- 2100 - Theatre Canada
- 2130 - Flying Circus
- 2200 - The Interns
- 2300 - News
- 2330 - Quote & Comment

FRIDAY, OCT. 23

- 1500 - Mr. Dressup
- 1530 - Edge of Night
- 1600 - Take 30
- 1630 - 55 North Maple
- 1700 - Birdman & Galaxy Trio
- 1730 - Bobino
- 1800 - La Boite
- 1830 - World of Man
- 1900 - Julia
- 1930 - Music Album
- 2000 - Minos 5
- 2030 - Donald Lautrec
- 2100 - Laugh-In
- 2200 - Mission Impossible
- 2300 - News
- 2319 - Feature Film
Down 3 Dark Streets

SATURDAY, OCT. 24

- 1500 - Hockey
- 1730 - Galloping Gourmet
- 1800 - Bugs Bunny
- 1900 - Rainbow Country
- 1930 - The Music Machine (one occ.)
- 2000 - Zoom
- 2100 - Name of the Game
- 2230 - Pierre Jean Jacques
- 2300 - CBC News
- 2320 - Cinema

SUNDAY, OCT. 25

- 1500 - The Group
- 1530 - New Majority
- 1600 - Hi Diddle Day
- 1630 - Klahanie
- 1700 - Tour de Terre
- 1730 - Skippy
- 1800 - Walt Disney
- 1900 - Quelle Famille
- 1930 - Atomes et Galaxies
- 2000 - Ed Sullivan
- 2100 - Pomerantz & Michaels No. 1
- 2200 - Weekend

MONDAY, OCT. 26

- 1500 - Mr. Dressup
- 1530 - Edge of Night
- 1600 - Take 30
- 1630 - 55 North Maple
- 1700 - Super 6
- 1730 - Bobino
- 1800 - La Boite
- 1830 - D'Iberville
- 1900 - TBA

- 1930 - Telescope 71
- 2000 - A la Seconde
- 2030 - Paradis Terrestre
- 2100 - This Land
- 2200 - Bold Ones
- 2300 - News

TUESDAY, OCT. 27

- 1500 - Mr. Dressup
- 1530 - Edge of Night
- 1600 - Take 30
- 1630 - 55 North Maple
- 1700 - Banana Splits
- 1730 - Bobino
- 1800 - La Boite
- 1830 - Rocket Robin Hood
- 1900 - News Digest
- 1930 - Red Skelton

- 2000 - Storefront Lawyers
- 2100 - Moi et l'autre
- 2130 - Rue des Pignons
- 2200 - Tuesday Night
- 2300 - News
- 2330 - Labrador Profile

WEDNESDAY, OCT. 28

- 1500 - Mr. Dressup
- 1530 - Edge of Night
- 1600 - Take 30
- 1630 - 55 North Maple
- 1700 - History Makers
- 1730 - Bobino
- 1800 - La Boite
- 1830 - Odyssey
- 1900 - Singalong Jubilee
- 1930 - One More Time (one occ.)
- 2000 - 100,000 Chansons
- 2030 - Consommateurs Avertis
- 2100 - Canadian Specials
- 2200 - Somerset Maugham
- 2300 - CBC News
- 2330 - All Round the Circle

A good reason for borrowing is a good reason for lending at HFC

Got a money need? See HFC. We'll understand and help... because in our 92 years we've seen... and solved... just about any kind of money problem you can imagine. When you need to borrow... to pay bills, buy a better car, take a vacation, or accomplish some other important purpose... we're glad to help. And we provide a wide choice of convenient repayment terms. Bring your money need to us today. Let us show you why, every year, more than 2½ million people borrow with confidence from Household Finance.

Apply for your loan by phone. We'll supply your loan by mail.

AMOUNT OF LOAN	MONTHLY PAYMENT PLANS					
	60 months	48 months	36 months	30 months	24 months	12 months
\$ 100	\$.....	\$.....	\$.....	\$.....	\$6.12	\$9.46
300	18.35	28.37
500	23.73	32.86	51.24
1000	41.45	58.11	91.56
1500	60.47
2500	77.16	94.48
3000	92.59	113.38
4000	107.53	123.46	151.17
5000	134.41	154.32	188.96

Above payments include principal and interest and are based on prompt repayment but do not include the cost of life insurance.

HOUSEHOLD FINANCE 
Corporation of Canada

LABRADOR CITY
Carol Lake Shopping Centre... Telephone 2647
Ask about our evening hours

The theory of evolution

PART FOUR

Down through the years, since this world-wide interest in the ancestry of man began, the great aim and goal of all paleanthologists has been to dig up the missing link, or some fossil of some creature that is neither man nor mammal but somewhere in between; in other words, the link between man and mammal - proof that such an evolving process took place.

Many have been the finds but because of the incomplete condition in which most skeletons were found, many if not all of the finished fossils are unreliable. It appears that the imagination of man was relied upon too heavily. For example, the Java Man, apparently discovered by a Dutch anatomist, Eugene Dubois in 1891 on the banks of the Trinity River in Java, was reconstructed from a skull bone, a left femur and two teeth. All other features such as the hair, ears, lips, hairy body, beastlike face and stooped position were merely surmised and served to strengthen the belief that present day man is related and directly descended from animals. Scientists believed that the Java man was actually an ape man and gave him the name 'pithecanthropus erectus', which means an erect ape man. The Java man was considered to be the missing link.

The Heidelberg man, often pictured to be part beast and part man was actually constructed from one lone lower jaw. It appears rather insane to accept this as substantial evidence for the theory of evolution.

The Piltdown Man, discovered in 1911 and long considered to be another part of the missing link, was constructed from skull fragments and part of a lower jaw found in Piltdown, England. It was actually a hoax performed by Charles Dawson, an English biologist, to claim credit for the discovery of the missing link.

In 1927, a fossilized tooth was found in cave deposits, thirty-seven miles northwest of Peking, China. Some years later, two nearly complete skulls and some teeth and jaws were found. From this was created 'sinanthropus pekinensis' which today is known as the Peking Man.

These and other fossils have been and are today used by scientists as a basis for their assumption that man evolved. Nothing has yet been found to be much more dependable in the way of fossils, yet we often see headlines in our newspapers and articles in numerous magazines proclaiming; 'Missing link found at last'; 'Mystery of the Origin of Man unfolds', 'Man, the top of the Evolutionary Scale' and we wonder what comes next?

From these and other fossils then it has been assumed that man is simply an improvement on other forms of life, a mammal who has adapted himself to his environment, sometimes changing it to his advantage until finally he has gained control over most other lesser forms of life.

He has much in common with other living things since his body is made up of the life-substance called protoplasm. His body contains bones, muscles, and organs which are similar to those of other forms of

life. In the final analysis, man is believed to be the end result of millions of years of the biological process of organic evolution.

Man belongs to the mammalian order of primates or the highest form of mammals. Since a mammal walks on all four legs, and since it is assumed that man evolved from the mammal, it is readily apparent that some changes were required in the skeletal structure of the mammal before we could have a man who walked on only two legs. The most obvious is probably that of the shape of the backbone, modifications in hip bones and thigh along with some remodeling of the foot since two feet would have to carry the weight normally carried by four.

Beside the changes in the skeleton of what was to become man, a far greater change was also necessary, namely that of the development of the brain especially the part of the brain called the cerebrum. Evolutionists contend that the development of the brain or the fact that it became larger than the brain of other mammals explains why man obtained his uniqueness and acquired mastery over other forms of life.

Why and what caused those changes to occur? Was it the urge of the mammals to change their skeletal structure and if it was at all possible for them to have such a desire why would they wish to undergo such remodeling and when this change finally did occur why did the mammals still remain in the undeveloped state side by side with those who had developed into man?

by Lawrence Jacobs

BOMBARDIER SKI-DOO

The lowest price on a reliable, proven Snowmobile ever offered anywhere. Get a genuine BOMBARDIER "Elan" SKI-DOO. The new full sized machine with even less weight and a big 12 h.p. Rotax engine. For this unbelievable figure.

\$595.00

(Electric Start \$100.00 extra)
Plus Nfld. SSA Tax. Buy a brand new machine now at less than the price of most used one.



SAVE—SAVE—SAVE
NOW.

GO ONE BETTER!

GO SKI-DOO!

FOR FURTHER INFORMATION CALL VINCE MARCHE. Res. 944-5117,
Bus. 944-2617

Or visit the showrooms of CITY MOTORS (LABRADOR) LTD.....

Your family and sex education in school: a unique project at J. R. Smallwood Collegiate

This past week saw the start of a comprehensive plan in Family Life and Sex Education which seems to be a first for this area if not for all of Newfoundland. The Sacred Heart Section of J.R. Smallwood Collegiate has initiated this program at the grades four and five level, with plans to expand to the remaining grades in the ensuing years.

In the question of family life and sex education many

areas need consideration.

Is there need for an organized program?

Who should teach the children? Who should be taught? How much should be taught? The answers to such questions are not always comprehensive nor satisfying.

After much dialogue between parents and educators (teachers, school board and clergy) a basic philosophy for action was

formulated.

One of the first facts which had to be admitted is that the children of Wabush are very much part of the world-wide social, technological and moral change that has burst in upon the human situation. This change brings with it new pressures on the values, attitudes and general behaviour of students as well as adults. It is imperative that the parents

and educators of our area try and help the children in their search for acceptable and real answers to the questions that haunt daily life.

These future adults must be helped in gaining insight, self assurance, courage to handle the world they will inherit.

Each person must learn about his physical, psychological, emotional and moral maturing and above all to be able to

appreciate himself as a person.

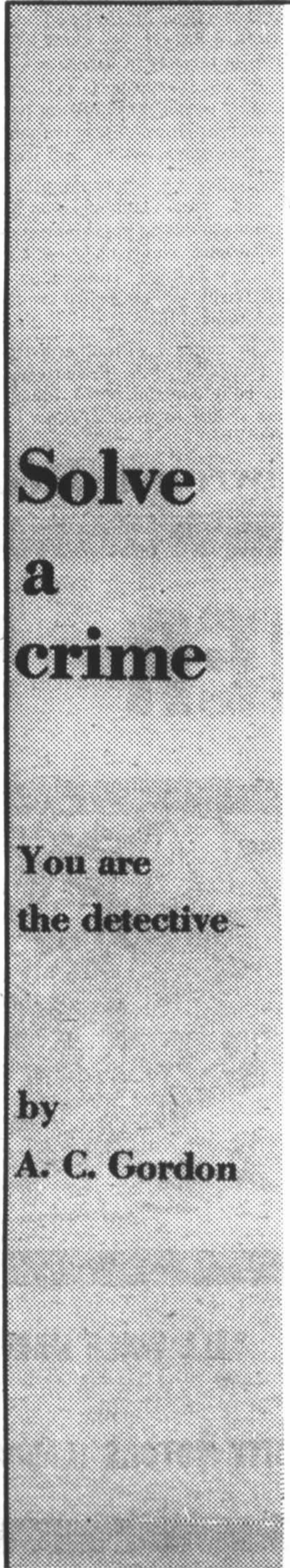
He must be helped to see that "sex is not something we do, sex is something we are" and to learn that respect and responsibility in personal relationships are necessary guides through life.

The people at Sacred Heart Section of Smallwood Collegiate think they have a plan which will help in such aims.



C.B.C. ASKS GRANTS: The Canadian Broadcasting Corp., in its 1970 annual report, says it is suffering from the effects of a parliamentary operating grant frozen at the 1969-70 level and it seeks a financial out. The report tabled in the Commons, last week, urges a system of capital

grants from Government to take increasing pressure off its operating budget. It now borrows from the Government for expansion and other capital costs. The reports states the CBC reduced staff and increased revenue from commercial advertising last year.



Solve a crime

You are the detective

by A. C. Gordon

You and officer Joe Thorne stand in the sitting room of the third-floor apartment listening to the sound of approaching footsteps in the corridor outside. The sounds stop outside the door, then you see the doorknob turning slowly, the door opens quietly, and a moment later a tall, dark, powerfully-built man, his hands plunged deeply into his trousers pockets, steps into the room. He steps back suddenly in surprise as he sees you two men watching him.

"What's this?" he exclaimed. Then his eyes dart to the other side of the room where the man's body lies face-down on the floor. "Mike!" he blurts out. "Is.....is he dead?"

"Very dead," says Officer Thorne. "We found him like this just a few minutes ago. We had come here to question him concerning his part in the big gambling-investigation case that's coming up before the Grand Jury next week. He was our star witness, you know."

"I can't understand it," exclaims the man. "I left him here just about a half-hour ago. I'm Terry McMann, you probably know....shared this apartment with Mike Stevens here. We took this apartment three days ago.....trying to keep Mike's whereabouts secret. We were afraid that some of the big gamblers' musclemen would try to get to him to keep him from testifying....they all knew he was going to sing. Mike was pretty scared, and was being careful not to show himself at the windows or at the door when anyone called. I left him here, just like I told you, about a half-hour or so ago....had to go out to buy some food. I locked the door after me with my key, even though I was sure no one had spotted our hideout. But I guess we must have slipped up somewhere along the line." And Terry shakes his head sadly.

"Can't see any signs of how the killer entered," remarks Officer Thorne. "The door wasn't forced open, and the windows are bolted from the inside."

"I think," you then say as you turn back to Terry McMann, "that curiosity got the better of you. You, of course, didn't know that we had arrived at this time. You just had to come back to make sure that the hired gunman had done a complete job on Mike Stevens."

"You're crazy!" shouts McMann. "You've got no evidence to back that up!"

"Oh, but we do have evidence," you reply, "the flaws in your story."

What are those flaws in McMann's story?

SOLUTION

In the first place, McMann claimed he had locked the door with his key when he went out to buy food. But you had entered with no difficulty, and upon his stealthy return McMann had used no key to enter the apartment...which leads you to believe he had sold out his friend, Mike Stevens, to the gamblers and left the door open for their hired killer to enter during his absence. Also, although he was supposed to have left to buy food, McMann had no packages in his arms upon his return.

CAROL PAINTING LTD.

PAINTING CONTRACTOR

DOMESTIC AND

INDUSTRIAL PAINTING



REASONABLE
PRICES
5 MAPLE
CRESCENT
APARTMENTS
PHONE 944-5551

PHONE
TODAY
FOR FREE
ESTIMATE

PHONE 944-5551

Scanning the market

BY CHARLES DEVINE

The market closed last week near the "Dow 760" level, just about back where it was at the beginning of this month. We noticed that over recent days the New York market has been performing better than the Canadian. The poor performance of the Canadian markets was probably caused by the Montreal kidnappings. However the first of the 3rd quarter earnings reports were not too impressive and unemployment is continuing to rise. So at the moment we can see nothing to "catch the market on fire" and the "800 breakthrough" seems far away. There are still some good buys in oils and metals but these must be weighed carefully against the overall market. The questions we must ask ourselves are: are we bottoming out in the North American economy? Are the more attractive U.S. figures election window dressing or are the production gains realistic of the trend?

Both Canadian and U.S. economies have bottomed out, but the duration of the process, accompanied by declining corporate earnings, is unknown. Canada is in a much more fundamentally sound economic state but cannot begin another substantial uptrend until the U.S. supports it. The U.S. economy is expanding, the money supply considerably and this, accompanied by bullish Department of Commerce figures for industrial production, is providing an illusion of substantial strength. Definitely, the direction is more positive now, although adjustment for seasonal industrial production figures and an easing of money expansion after the Nov. 2nd U.S. elections, may show a somewhat slower growth.

It would appear that the logical economic growth pattern that the North American economy will follow is middle of the road, not stagnationist and not expansionist. Unemployment will remain high while moderating in time; economic growth will be slow in returning; consumption will increase but not to a point to cause demand-pull inflation; the wage spiral may level off but it will be the main upward pull in inflation which will also moderate somewhat. On an international basis, the North American inflation should compare favorably with other OECD countries. We do not feel that a bull market is beginning. Rather the economy is in the "in-between" phase from a bear to a bull market. The current market may be fully discounting post-election statistics and possibly some monetary restraint or small market adjustment may occur. The main point is that, barring abnormal factors such as a monetary crisis, U.S. intervention in the Near East, or a very prolonged auto strike, equity markets are in a range for at least partial commitments with additional commitments when the trend clarifies itself.

One of the areas most attractive for investment is the natural resource area. For participation in the western oil and gas producers, we recommend Hudson Bay Oil and Gas Ltd., Canadian Superior Ltd., Western Decalta Oils Ltd., Acquitaine Co. of Canada, and Dome Petroleum Ltd. For the metals we recommend Brenda Mines Ltd., Mattagami Lake Mines Ltd., Northgate Explor. Ltd., and Asbestos Corp.

Other areas for investment might be chartered banks (they often lead the markets back) and some utilities should cheaper money occur.

INVESTMENT TERMS AND DEFINITIONS:

Q: Is there more than one type of preferred stock?

A. Yes. As has been mentioned, preferreds may be cumulative or non-cumulative with regard to unpaid dividends. They may also be voting or non-voting. In addition there are:

A. Convertible preferred stock, which, at the option of the holder, may be exchanged into the company's common stock on the basis of a given number of common share for each preferred share. There are many variations to the conversion privilege. Sometimes this privilege lasts only for a few years; sometimes it holds good as long as the preferred shares remain outstanding. For example, each Shell Investments Limited 1st 5.5% Cumulative Convertible Redeemable Preferred Share may be converted into a depository certificate representing 1/4 of a Class B share of Shell Canada Limited up to September 30, 1972, when the privileges lapse.

Next week we will look at Participating preferred stocks. Redeemable preferred stock. Sinking fund preferred stock. And Purchase fund preferred stock. All have particular advantage which may benefit the holder.



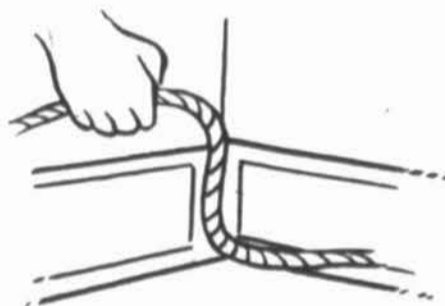
A fashionable outfit for a teenager. This was one of the garments modelled at the recently-held Ayre's fashion show.



A trim and attractive dress, designed for the post-teen years is modelled here during the fashion show.



Models and mannequins line up for this group shot taken during the recently-held Ayre's Limited fashion show.



CORNERING CONDUIT

Maneuvering heavy electric conduit around a sharp 90-degree corner in a limited space can be a problem. However, one easy way of doing this is by combining two gradual curves, as in the illustration. Holding the conduit flat against the wall, bend it down gradually into the corner, then out from the corner flat against the other wall. In this way, your conduit will negotiate the right angle turn without any strain, and the cable can then be covered with paneling without a break (Gene Von).

TIME WAS..

when average
life expectancy
was 22 yrs.



Back in the days of the
Roman Empire, people only
lived a short time. Today in
the United States, life
expectancy is 70 years!

CITY DRUGS LTD.

SHOPPING CENTER - LABRADOR CITY

TELEPHONE 944-2448 or 5395

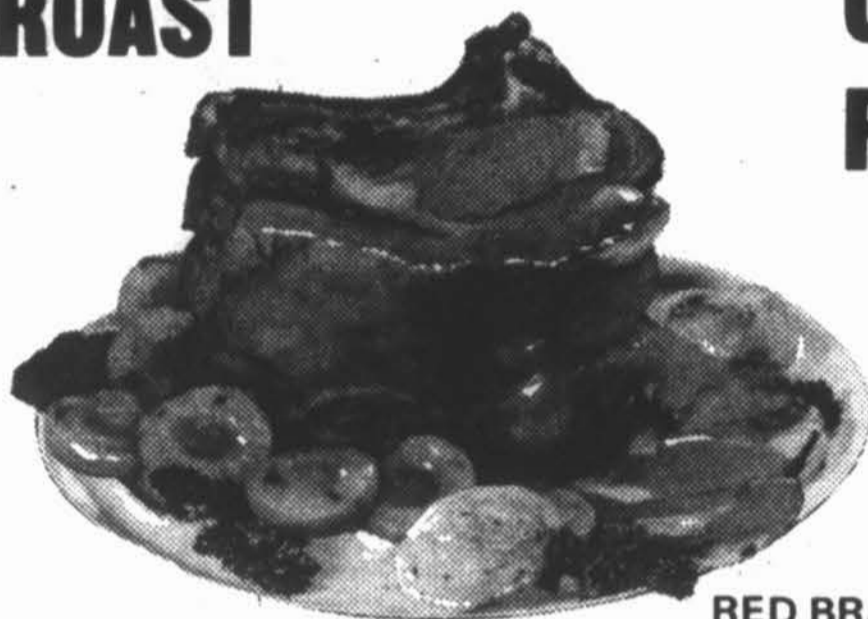
BEEF

ROUND-UP

RED BRAND (First 5 Ribs)

STANDING RIB ROAST

\$ 1 19
LB.



RED BRAND

CROSS RIB ROAST

SPECIAL

83^c LB.

RED BRAND

BLADE ROAST

SPECIAL

53^c LB.

JUBILEE (1 lb.)

BACON

SPECIAL

72^c LB.

RED BRAND

RIB STEAK

SPECIAL

\$ 1 29 LB.

HAMBURGER

"FRESH EVERY HOUR" SPECIAL

59^c LB.

DUNCAN HINES (Asst. Flavors)

CAKE MIXES

SPECIAL

2 FOR 99^c

CLARK (8 oz.)

BEANS

" IN TOMATO SAUCE" SPECIAL

5 TINS 89^c

CHRISTIES

MILK LUNCH BISCUITS

SPECIAL

3 \$ 1 00
PKGS.

YORK VIENNA (4 oz.)

SAUSAGES

SPECIAL

27^c TIN

AYLMER (Asst. Choice - 10 oz.)

GREEN PEAS

SPECIAL

29^c TIN

LIQUID BLEACH (128 oz.)

MIXO

SPECIAL

79^c BTL;

BUDGET (2 Rolls Per PACK)

TOILET TISSUES

SPECIAL

27^c PACK

FRESH PRODUCE SPECIALS

McINTOSH FANCY (5 lb.)

APPLES

SPECIAL

89^c

5 lb.



QUEBEC NO. 1 (5 lb.)

CARROTS

SPECIAL

59^c

5 lb.



N.B. NO. 1 (50 lbs.)

POTATOES

SPECIAL

\$ 2 09

BAG



SHAMPOO

HEAD & SHOULDERS

SPECIAL

\$ 1 19

JAR



BOWRINGS SUPERMARKET

LABRADOR CITY