

**INTER-CITY
TRANSPORT
LIMITED**

BONDED CARRIERS
MEMBERS N.L.T.A.
GENERAL TRUCKING



PERMIT - 445
WAREHOUSING
BODY - SHOP
LABRADOR CITY
Phone 944-2523

The Aurora

The weekly newspaper of Labrador West

Vol. 1 No. 47

PUBLISHED IN LABRADOR WEST, WEDNESDAY, FEBRUARY 25, 1970

Price 10 cents



SCIENCE FAIR AT LABRADOR CITY COLLEGIATE

The Science Club of Labrador City Collegiate in co-operation with the Science teachers and Science students will endeavor to inform the public and the junior students of Labrador West of the modern trends in the study of Science. They hope to accomplish this through their 1970 Science Fair which is to be held on March 2nd of Education Week, in the Industrial Arts Section of the Labrador City Collegiate Building. During the hours from 9:00 a.m. to 1:30 p.m., grade seven and eight students from all the schools in the area are invited, along with their teachers, to tour the school, see the three laboratories (physics, chemistry & biology), attend the fair and watch a film on Science. The fair will continue in the

evening from 7:00 p.m. - 10:30 p.m. for the benefit of the general public. Students from every class in the Science program will participate in the fair. These students will show displays, experiments and demonstrations. The following descriptions will indicate the nature of some of the exhibits. 1) Three members of the Grade eleven physics class are setting up a compound machine involving a number of simple machines. A screw jack raises a lever, the lever pulls a rope over an axle and the wheel pulls on a pulley attached to a boom. The pulleys lift another class of lever and this lever pulls on a cart sliding on an inclined plane. 2) The Biology class will dissect a frog showing the correct procedure of dissection. 3) A physics student will demonstrate the process of electroplating with copper and how to make different kinds of

batteries. 4) Another physics student will show some of the effects of electro-magnetic induction. He will boil water, cause a ring to fly into the air, light a bulb suspended in water without any connections to power, and cause a ball to rotate in a glass of water without any force applied to it. 5) Your voice pattern can be seen on an oscilloscope. Compare your voice with that of a friend. See the patterns created by a tuning fork, various frequencies, different harmonies, interference patterns, etc. 6) See the operation of a real miniature steam engine. 7) The Chemistry class will show how to produce oxygen and hydrogen. 8) The Physical Science Class will show how to make paint out of common chemicals. 9) A Geiger counter will be on display showing how to detect radio-activity. If you

have a watch that glows in the dark, it may register on the geiger counter. 10) Three months ago, four students of the Science club started to grow a crystal from a microscopic seed. Today that crystal has grown to over two inches on each major surface. Learn to grow crystals of your own - it can be an intriguing hobby. These are but a few of the many exhibits which will be on display. If you are interested in Education or just Science, then make an effort to see the fair on March 2 at Labrador City Collegiate. You may arrive any time after 7:00 p.m. and stay as long as you desire. There is no obligation and no charge. Above is a limited view of the Chemistry Laboratory. Grade ten students with their instructor Mr. W. Russell (right) is at work on an experiment. This Laboratory will be open for viewing on March 2.

GOVERNMENT INSPECTED GRADE FROZEN

BROILER CHICKEN

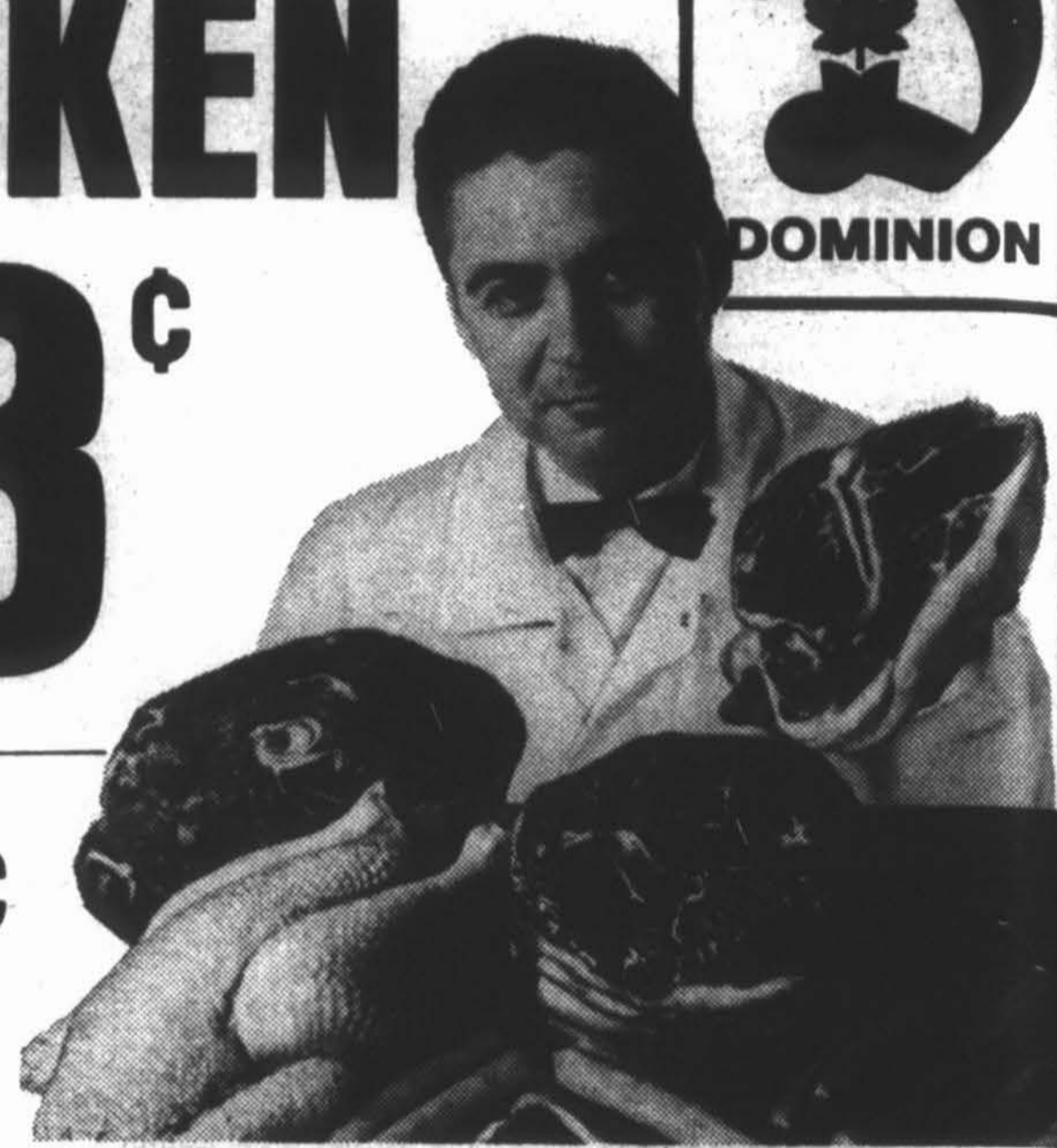
YOUNG and TENDER

POULET A ROTIR

SPECIAL
2-3lb.

43[¢]

CATEGORIE A JEUNE-TENDRE-CONGEE



Maple Leaf Brand-Smoked Midget

COTTAGE ROLLS

Roulés Cottage-Fumés-Midget-Maple Leaf

lb. **99¢**

ACHETEZ AVEC CONFIANCE
Toute la viande ou produit de viande vendu au Dominion, qu'il soit frais, congelé ou apprêté est **INSPECTÉ par le GOUVERNEMENT!**



SHOP WITH CONFIDENCE!
All meat and meat products sold at Dominion, whether Fresh, Frozen or Processed are **GOVERNMENT-INSPECTED!**

Maple Leaf-Economical

WAX BOLOGNA

by the piece

lb. **43¢**

Bologne en Morceau-Ciré-Maple Leaf.

Jubilee Brand

RINDLESS BACON

Pqt 1 lb. Pkg.

95¢

Bacon Sans Couenne-Marque Jubilee

Maple Leaf-Breakfast

SAUSAGES

Loose

lb. **63¢**

Saucisses à Déjeuner-Maple Leaf

Hygrade Brand Sliced Olive or

CHICKEN LOAF

Pqt 6 oz. Pkg.

35¢

Pain de Poulet ou Olive-Tranché-Hygrade

Richmello

FRUIT COCKTAIL

Boite 28 oz. Tin

55¢

Cocktail aux Fruits Richmello

Kellogg's

CORN FLAKES

2 Pqts. 16 oz. Pkgs.

89¢

Corn Flakes de Kellogg's

Good Luck

MARGARINE

3 Pqts. 1 lb. Pkgs.

1.00

Margarine-Good Luck

Assorted Flavoures

Richmello Ice Cream

Carton

1.05

Crème Glacée-Richmello-Assortie

1/2 Gallon

Domino-Frozen

Sliced Strawberries

Pqt. 15 oz. Pkg.

55¢

Fraises-Tranchées-Congelées-Domino

Domino-Frozen

French Fried Potatoes

Pqt. 4 lb. Pkg.

1.15

Patates Frites-Congelées-Domino

Facelle Royale

TOILET TISSUE

Papier de Toilette

Facelle 2 Rouls
Royale 2 Rolls

1.00

Adorn-Reg. or Fime

HAIRSPRAY

Fixatif

À Cheveux

Adorn

(Reg. \$1.98)

Bet 7 oz. Tin

1.58

ALWAYS FRESH FRUITS & VEGETABLES!
FRUITS ET LEGUMES TOUJOURS FRAIS!

From Florida U.S. Canada No. 1-Juicy-48's

WHITE GRAPEFRUIT

PAMPLEMOUSSES

6 Pour for

89¢

Blancs-De Floride
E.U. - No. 1 du Canada
Juteux-Grosneur 48

California U.S. Canada No. 1-Green

CABBAGE

Firm

lb. **25¢**

Choux Verts-De Californie E.U. No. 1 au Canada

California U.S. Canada No. 1 - 24's (None Priced Higher)

Iceberg LETTUCE

ea ch. **34¢**

Laitue Iceberg-Gross. 24-de Californie (Aucune à prix Plus élevé)

**CENTRE D'ACHAT CAROL LAKE
SHOPPING CENTRE LABRADOR CITY
et-and WABUSH PLAZA, LABRADOR**

We reserve the right to limit quantities!
Nous nous réservons le droit de limiter les quantités!
Prix en vigueur jusqu'à Sam. le 28 Fév. 1970
Prices effective until Sat. Feb. 28th., 1970



DOMINION STORES LIMITED

DOMINION

The local scene

Carnival '70 to be held from March 19 to 21

The Labrador West Chamber of Commerce, sponsors of the Winter Carnival are offering a \$100.00 prize to the resident of Labrador City or Wabush for the best Ice Sculpture on display during Carnival. An independent panel of judges will be appointed to judge the best sculpture. Persons who wish to register their "works of art", are asked to telephone 944-2222. Only entries that have been registered will be eligible for the \$100.00 prize.

Club, Monday; March 9th at 8 pm. For further information telephone 944-2224.

The Wabush Branch of the Red Cross Society will be conducting a door to door campaign from Monday March 2nd to Monday March 9th. Please give generously to the Red Cross Canvasser.

Bill West, President of the Labrador City Minor Hockey Association is pleased to announce the sponsoring of a Winter Carnival Draw, a barrel containing \$5,000.00.

Five \$1,000.00 bills will be placed in the barrel and by elimination draw, the last ticket will be the winner. The draw will be held Thursday, March 19th at the Ashuanipi Social Club. Highlights of the draw will be \$50.00 prizes to the holder of the first ticket drawn, and every tenth ticket thereafter. The seller of the winning ticket will also receive a prize of \$50.00. Mr. Gus Bartlett, Finance Chairman is distributing the tickets and they are now on sale at \$5.00 each. Ticket holders are invited to an evenings entertainment at the Ashuanipi Social Club.

The Labrador City/Wabush Chapter of the ARNN will be collecting clothing for the "Grenfell Mission". Any person wishing to contribute to this cause may bring their donations to the Switchboard of the Captain Wm. Jackman Memorial Hospital.

An Irish Stew supper will be held in the United Church Basement, Labrador City on Monday March 16th; from 5 to 7 pm. The supper is sponsored by the United Church Women.

The Wabush Volunteer Fire Brigade will be holding a dance at the Wabush Recreation Centre, Friday March 13th, music will be provided by the Chevelles, a hot meal will be served; and prizes will be awarded. Tickets are available at \$7.00 a couple from 282-3079, 3035 or 6768.

The Labrador City/Wabush Chapter of the ARNN will be awarding a \$50.00 scholarship to any high school student in the area or to any person who plans to enter nurses training in September 1970. For further information regarding qualifications, please contact Mrs. Ada Penney at 944-2018.

The Labrador West Chamber of Commerce reports that the 1970 Winter Carnival will be held from March 13-22 to coincide with the Canadian National Alpine Ski Championships scheduled for March 19-21. The Chamber of Commerce is acting as Carnival Co-ordinator to organize the various events and activities sponsored by local service, sports, recreational and social clubs. A substantial financial contribution has been pledged by the Local Improvement District of Labrador City to defray Carnival expenses, and the Local Improvement District of Wabush has been requested to provide the monetary assistance needed for twin-town participation.

Efforts are aimed at encouraging community co-operation to demonstrate the camaraderie and spirit of Carnival for the benefit of all visitors to the area during this period. To help achieve this objective, the Lions Club has undertaken to promote the sale of Carnival attire to establishments and service organizations whose employees are in contact with the public. Additionally, a \$100.00 prize will be awarded for the best ice sculpture registered with the Carnival Committee. (Telephone 944-2222 to register entries). The Kinsmen Club is organizing this year's Carnival Queen Contest and will assume all arrangements connected with the sponsoring of Princesses, Contest judging, attendance of Queen and Princesses at Carnival functions, etc.

Final arrangements for

Carnival events and sponsorship have not yet been completed, but the program plans include: Carnival Queen Coronation and Ball.

Teen Age Queen Coronation and Ball.

Carnival Parade of Floats.

Bonhomme Masquerade Dance.

Beer-Drinking Contest

St. Patrick's Day Dances

Children's Carnival Costume Contest

Hockey Tournaments, Play-offs and Oldtimers Games.

Ladies' Annual Invitational Curling Bonspiel.

Badminton Club Carnival Tournament

Motor tobaggan Races.

Dart Tournament,

Figure Skating Exhibition.

Minor Hockey Money Draw.

Kinsmen Monte Carlo Draw.

Ski Championships and Ski Ball; plus many, many more sports and social activities.

It will be a busy ten days - and the important thing to remember is that this is your carnival. Don't sit on the sidelines - join in the preparations - and enjoy the fun of "Carnival - 70!"

Kinsmen and Lions pledge their support

At meetings held with The Chamber of Commerce Carnival Committee, the local Kinsmen and Lions Clubs have pledged their support and assistance in organizing this Winter's "Carnival - 70."

The Lions Club has agreed to undertake the distribution of Carnival garments which are symbolic of Carnival spirit and the Club hopes that all the merchants and other commercial establishments in the area will outfit their employees who are in contact with the public in this "Carnival - 70" attire. The success of this project will fill a vacuum which has existed in and detracted from previous Carnivals.

The Kinsmen Club has agreed to relieve the Carnival

Committee of a major Carnival task by undertaking the organization of the Carnival Queen Contest. This responsibility includes obtaining sponsors for the Princesses, co-ordinating the events and judging of the Queen and arranging for the attendance of the Queen and Princesses at the various functions during "Carnival - 70."

These projects undertaken by the Kinsmen and Lions are of major importance to the success of "Carnival - 70", and the co-operation of these organizations is indicative of their interest in the community. Their contributions in this regard will ensure that the residents of Labrador West can look forward to the best Winter Carnival ever held in the area.

The Brownies of the fourth Carol Brownie Pack wish to thank the parents who contributed to their recent Bake Sale.

There are two entries so far that will be competing for the title of Carnival Queen. The Sir Wilfred Grenfell Hotel will be entering a Princess and also the Ashuanipi Social Club. Carnival '70 will be held this year from March 13th to the 22nd inclusive.

Bowings showing of Spring Fashions, sponsored by the Labrador City Local Association of Guides and Brownies, will be held at the Ashuanipi Social



Sean O'Leary a grade seven student at the J. R. Smallwood Collegiate, Wabush is the prize winner for January in the Daily News and Aurora Carrier Contest. Sean has been a carrier of the News and Aurora since July, 1969, and covers Guy Street, Cabot and part of Bowater Drive. Persons interested in having the Daily News and Aurora delivered to their home, please call Sean at 282-6663.

CAROL PAINTING LTD.
PAINTING CONTRACTOR
DOMESTIC AND
INDUSTRIAL PAINTING

REASONABLE
PRICES
5 MAPLE
CRESCENT
APARTMENTS
PHONE 944-5551

PHONE
TODAY
FOR FREE
ESTIMATE



PHONE 944-5551

**WATCH FOR IT
COMING SOON TO
THE
SIR WILFRED GRENFELL HOTEL
SPECIAL
ENTERTAINMENT**

The Aurora

Published every Wednesday at Labrador West, Newfoundland and Labrador and printed by Robinson-Blackmore Printing and Publishing Limited, O'Leary Avenue, St. John's, Newfoundland. Subscription rate Canada and Foreign \$6.50. Mailing address, P.O. Box 2090, Labrador City.

THE SNOWMOBILE IS HERE TO STAY

Rural residents and others with an affection for country quiet may as well abandon hope that the noisy snowmobile will be a short-lived recreational fad. Note this advice to fellow doctors from Dr. Marytyn of Peterborough, Ont. "The recreational use of powerful snowmobiles will increase this year and likely for the next five years. Emergency departments of hospitals should be prepared to cope with more and more of the unusual accidents associated with them." The doctor kept count of accident victims brought in over a three-year period to Peterborough's two main hospitals. Casualties rose from 8 in winter '67 to 22 in '68 and 105 last season. His report stands as a do-and-do not manual for drivers and manufacturers.

If you care for your spine, don't try jumping the machine. With a note of incredulity, Dr. Martyn reports several patients actually tried to imitate dramatic television commercials where a machine bursts over a snowbank at high speed. For whatever reason, two snowmobiles were actually driven off into a 30 ft. quarry by exuberant drivers. Manufacturers and users associations are considering a number of improvements. These include different skis for better stability, studded tracks for better braking, wider shelves over the track to protect against leg entrapment and firmer windshields. Until such changes arrive, and probably even then, the doctor suggests a number of safety measures. Learn in detail how your machine works. Wear warm clothing, perhaps suits that support a body in water. Use goggles. Don't drink and drive, least of all at night. Know your snowmobiling territory. Don't tow toboggans without solid towing tongues. Don't bump along for a protracted period in any one sitting or kneeling position.

It had to happen. A traffic signal has been installed in the middle of the Assiniboine River near Winnipeg to warn snowmobilers of open water caused by a cable-laying operation. With snowmobile sales in North America expected to reach 500,000 this year, control is becoming a problem. Tighter regulations are being studied to stem the rising number of accidents and to prevent the sport from achieving a high fatality toll. As a first step, the Quebec Provincial Police last month formed a snowmobile squad. Snowmobile manufacturers have not taken an open stand on governmental regulation of the sport, but all are safety conscious, in the belief that a live snowmobiler is a potential customer forever. Meanwhile, untrammelled by regulations, snowmobiling is enjoying a boom unheard of in the history of sport.

Mr. J.A. Ratelle of St. Agathe, President of the Canadian Snowmobile Association, estimates that in Quebec alone this year, 65,100 new snowmobiles will be sold as well as 35,000 second hand machines, for a total value of \$52 million. There are side benefits too: accessories sales should total \$5.3 million for the year, and sales of special clothing is estimated at \$25.1 million. The Quebec provincial government is also a beneficiary of snowmobiling. The C.S.A. estimates that the sales tax will provide Quebec with \$6.6 million with gasoline tax bringing in \$2.7 million and the registration of machines another \$1.0 million. Studies indicate the market will have a potential of 4,000,000 in North America and Europe. "The market is expanding and will renew itself every three years" states one manufacturer. "The average snowmobile purchase is \$1,000.00 he noted. "This is especially true in areas where the owner does not need a car trailer." He said the industry is geared to a three-year life for a machine and it is on this basis that the re-cycle of the market is calculated. All

SLUGGISH EMPLOYMENT FORECAST: Employment prospects for the first half of 1970 indicate a continuation of the slowing trend that marked the final quarter of 1969. A national survey of Manpower Services Ltd. shows that retail department stores and the beverage and construction industries foresee more personnel reductions than other sectors. The survey, which includes forecasts of more than 1,000 Canadian firms, indicates paper, insurance, banking and clothing companies predict increased personnel requirements for the half. On a regional basis, Calgary leads Canadian cities with a predicted increase in employment of 17.4%. Windsor follows with 10.1% and Victoria 10.0%. Hamilton employers forecast a decline of 12.7% in personnel levels. A decline of 11.5% is indicated for Regina and 9.8% for St. John's.

MATERNITY BENEFITS FOR SINGLE CLERKS: Unmarried supermarket clerks in Philadelphia have won a novel fringe benefit in their latest labor contract, **MATERNITY BENEFITS.** The clause was written into the hospitalization plan which Local 1357 of the Retail Clerks International Association won as part of a two year contract with three supermarket chains. "We have to keep our hippies and flower children happy," explained W.W. Young, president of the local. Mr. Young said that a large number of the 7,000 member covered by the contract are college students and that "some" are unwed mothers.

DON'T WASH THE

makers have entered teams in the snowmobile racing circuit, the largest in North America being run in various parts of Quebec under the sponsorship of the O'Keefe brewery. This year \$19,000.00 is offered in prizes. Snowmobiles have not only taken over from "Old Dobbin" in the winter racing circuit, but have replaced the famous dog teams of the R.C.M.P. in the Canadian Arctic. The Finnish army have bought some for Finnish border guards use for patrolwork. In Canada, the Canadian Armed Forces have been testing a variety of machines for work in the northland, and the U.S. Army in Alaska is expected to follow suit.

With one million snowmobiles in use in North America and manufacturers expecting sales to reach one million annually as "minimal saturation", the snowmobile, like the motor boat, is here to stay and to shatter the silence.

Here 'n' there

PLATE! A multi-sheet plate which never has to be washed was exhibited at a fair in Frankfurt, Germany. This camper's delight is made of layers of polystyrol. After usage, you take off the dirty layer, leaving a fresh surface. Thus, one plate may be used some 40 times.

BOWATERS STEP UP PRODUCTION: Because of an upward swing in the world's newsprint markets. Bowaters Newfoundland Ltd. is scheduled to operate at capacity this year. The mills will chalk up 358 working days and a production of 400,000 tons. Ben Pryde, general manager, said he expects a very good year. The mills haven't had a full year's production for several years. In 1968 they shut down for six weeks. In 1969, besides a mid-summer shut-down, there was a strike. Production in 1968 was 325,000 tons. The 1969 final figure was 335,000 tons. The company had concentrated on the Canadian-U.S. market, but, at the beginning of 1968, started to get back into exports. Now, the export of newsprint outside of North America accounts for one third of the company's business. Recently shipments were made to Turkey, Spain, and South Africa.

B.B.C. HAS LOSS IN LATEST FINANCIAL YEAR: British Broadcasting Corp., citing government delay in raising consumer license fees, reported a net loss equivalent to \$11.5 million for the year. B.B.C. said fees were raised to the equivalent of \$15.60 from \$13.00 a set last year producing about \$15 million more revenue. Had the fees been raised earlier,

the report said, the British government-owned corporation wouldn't have incurred a loss. In Britain, owners of television and radio sets are charged fees because B.B.C. doesn't air commercials. Failure of more than one million listeners to pay license fees cost B.B.C. about +26 million, according to the report.

GOING UP: Swift and comparatively quiet construction is promised for the Toronto-Dominion Bank tower in Vancouver's Pacific Center complex. Erection began recently, and the 30 storey tower, the largest office building in Vancouver, will rise at a rate of three storeys every two weeks. Dominion Bridge Co. is building the steel-frame tower, and except for the high tensile bolts used to tie columns and crossbeams, the tower will be entirely welded. Vancouver will thus be spared the usual rivet gun racket.

AMERICAN EXPRESS TO ENTER U.S.S.R. American Express said its credit cards will be accepted in Moscow and Leningrad beginning sometime in 1970. According to a contract signed last month by American Express and Intourist, the Soviet state tourist and travel office, the cards will be honoured initially in Intourist hotels, restaurants and bars. Cardholders will also be able to charge Intourist travel by rail, sea and air, including Aeroflot national and international flights, as well as car rental, tours and theater tickets. American Express said it expects its card to be honoured eventually by all the more than 100 hotels operated by Intourist.

THE "MINI" AMBULANCE: Extra expense looms for Volkswagen in one area. The auto maker and dealers in the U.S. give \$150.00 in savings bonds to parents of babies born in VW cars on the way to the hospital. To the end of November already 37 had collected in 1969. The previous high was 28 in 1968. Observes a VW spokesman, "The word is obviously out."

Mining briefs

QUEBEC CARTIER SHIPMENTS IN 1969: During 1969, Quebec Cartier Mining Co., shipped to world markets a total of 7,735,000 gross tons of iron ore concentrate produced at its operations in the Quebec-Labrador region. This tonnage was loaded into vessels at Port Cartier, Que., on the Gulf of St. Lawrence, 191 railroad miles south of the mine and plant at Gagnon. In 1968, the iron ore shipments by Quebec Cartier amounted to 8,601,238 tons.

STEEL PRODUCTION IN WEST GERMANY: West Germany's crude steel production rose to a record 45,322,000 metric tons in 1969 as compared with 41,159,000 in 1968. West Germany's total pig iron production was 33,763,000 tons in 1969, up from the 30,305,000 tons produced in the preceding year.

SILICOSIS STUDIED: Minister of Mines Allan F. Lawrence announced in the Ontario Legislature recently that Dr. John F. Paterson, head of the department of medicine at Sunnybrook Hospital, will make a thorough study of the incidence of silicosis among miners, the efficiency of present preventative measures and methods of diagnosis and treatment. This will, in effect, be an up-dating of Dr. Paterson's previous study, conducted in 1958, and a review of the results of developments in the prevention and treatment of silicosis since his findings were reported and published in December 1959. Dr. Paterson is expected to have a new report of his findings and recommendation for delivery to the Minister by June 1971.

C.N. RECORD ORE TONNAGE: A record in

iron ore handlings was established in 1969 when Canadian National Rys. delivered 4,275,22 tons of raw and pelletized ore to Thunder Bay dock facilities. These shipments surpassed the previous record set in 1968 by 255,239 tons. C.N. delivered 3,020,348 tons of pelletized ore to the transfer terminal at the Mission, while 1,254,874 tons of raw ore and pellets were received at the railway's ore dock at Thunder Bay. The ore was shipped from the Steep Rock and Caland mines near Atikokan and from the Griffith Mine at Bruce Lake. A total of 247 boats cleared Thunder Bay during 1969.

MORE COPPER TO JAPAN: Lornex Mining Corp. has signed formal agreements with six Japanese copper smelters and three trading companies for sale of Lornex's entire output of copper concentrate. The deal runs over a 12 year period and would be worth \$700 million at today's prices. The contracts are subject to the Japanese governments approval.

The Japanese consortium will provide \$26.5 million (U.S.) to help bring Lornex into production. Lornex has also signed contracts with three Canadian banks to provide \$60 million, to be secured by a first mortgage. The mine is expected to begin producing in 1972.

I.O.C.C. SHIPMENT IN 1969: During the year 1969, Iron Ore Co., of Canada shipped to world markets a total of 12,655,811 long tons of iron ore originating at its mines and plants in the Quebec-Labrador region. At the port of Sept Iles, Que., on the Gulf of St. Lawrence, this

tonnage was loaded out in 419 vessel cargoes at the I.O.C. dock terminal. Because of a strike, the shipments in 1969 declined by 3,804,497 tons from the record 16,460,308 tons in 1968. In 1969, I.O.C. shipped from Sept Iles, the major portion, amounting to 8,050,340 long tons, in the form of iron ore pellets produced at the Carol Pellet Plant, Labrador City, 265 railroad miles north of the port. The second largest quantity, comprising 4,277,111 tons, was direct-shipping ore mined at Schefferville, 360 miles north of Sept Iles. The remaining 328,360 tons were concentrate produced at Labrador City.

RECORD STEEL PRODUCTION IN 1969: Steel production in the U.S. totalled a record 141,027,000 net tons last year, according to a tabulation of 1969 figures released by American Iron & Steel Institute. The 1969 tonnage exceeded the previous record of 134 million tons in 1966 and compared with 131.5 million tons in 1968. Basic oxygen furnaces, which since August have been producing more steel than the long dominant open hearth furnaces, accounted for 60,202,000 tons of last year's total, only slightly below the 60,950,00 produced by the open hearths. Steelmaking in electric furnaces grew in 1969 to 19,875,000 tons, from 16,814,000 tons in 1968. Electric, long identified as producers of alloy and stainless steels, are increasingly being used to make carbon grades as well.

MINE CONSULANT DIES: David Alex Duff, well known in the Canadian mining industry, recently died in Toronto at the age of 69 years. He was born in Harbour Grace, Newfoundland, and was a graduate of McGill University.

Arena schedule

Thursday 26th	Mother and Tots Skating	10:00 - 11:30 a.m.
	Minor Hockey	5:00 - 7:00 p.m.
	"B" all star practice	7:00 - 8:30 p.m.
	Industrial League Hockey Game	9:00 p.m.
	Royals hockey practice	10:30 - 11:30 p.m.
Friday 27th	Minor Hockey	4:45 - 6:45 p.m.
	Intermediate "B" Finals	
	Goose Bay vs Churchill Falls	8:00
	Industrial league hockey	10:00 p.m.
Saturday 28th	Minor Hockey	8:00 a.m. - 1:00 p.m.
	Public Skating	1:00 to 3:00 p.m.
	Figure Skating	3:30 to 6:30 p.m.
	Intermediate "B" Finals	
	Churchill Falls vs Labrador City	8:00 p.m.
Sunday, March 1st	Intermediate "B" Finals	
	Labrador City vs Goose Bay	1:30 p.m.
	Minor Hockey	3:30 to 6:30
	Exhibition Hockey Game	
	Labrador City All Stars "A"	
	vs Labrador City "B" All Stars	
Monday, Mar. 2	Minor Hockey	4:45 to 6:45 p.m.
	Broom Ball	7:00 to 10:30 p.m.
Tuesday, Mar. 3	Mothers & Tots Skating	10:00 to 11:30 a.m.
	Figure Skating	4:00 to 5:00 p.m.
	Minor Hockey	5:00 to 7:00 p.m.
	"B" League Hockey	7:00 p.m.
	Industrial League Hockey	9:30 p.m.
Wednesday Mar. 4	Minor Hockey	4:45 to 6:45 p.m.
	"B" All Star Practice	7:00 to 8:00 p.m.
	Public Skating	8:30 to 10:30 p.m.

Wabush Industrial League

TEAM STANDINGS

TEAM	WINS	LOSSES	TIES	GF	GA	POINTS
COMBINES	11	3	5	72	47	27
ELECTRODES	10	2	7	50	39	27
FLYERS	4	8	5	45	62	13
EAGLES	1	13	3	49	68	5

TOP SCORERS

PLAYER	TEAM	GOALS	ASSISTS	TOTAL
B. Delaney	COMBINES	18	19	37
K. Power	COMBINES	12	22	34
J. Power	ELECTRODES	19	13	32
B. Lacey	COMBINES	15	7	22
T. White	EAGLES	10	11	21
N. Haire	EAGLES	11	9	20
R. Reid	ELECTRODES	10	9	19
G. Horlick	ELECTRODES	6	10	16
I. Ivany	EAGLES	9	5	14
J. Ackerman	EAGLES	7	7	14

MARITIME LIFE ASSURANCE COMPANY

HEAD OFFICE HALIFAX

The Company with "Venture Growth" the modern concept of life protection.

Resident agents in Labrador City,

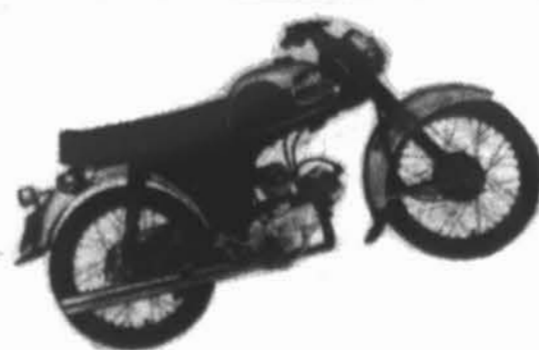
Ron Brown 944-2294

Phil Lozman 944-2294

Tom Price 944-3373

Branch Office Millbrook Shopping Centre, Corner Brook, Nfld.

Branch Manager M.W. Scott, Master Mariner



YAMAHA



It may seem a long way away but Summer is coming and we at

WABUSH YAMAHA CENTRE

wish to inform everyone that we are now taking orders for the 1970 all new motorcycles and outboards. Use our convenient lay-away plan.

We are also your authorized snow prince snowmobile dealers with 1970 models on display.

CALL CHUCK OR RAY
282-6651 - 282-6802,
61 GRENFELL DRIVE,
WABUSH.

For your information

CANADIAN HOUSING CONSTRUCTION: Housing starts in Canada reached a record 210,415 in 1969, up 6.8% from 196,878 in 1968, and apartments maintained their dominant role. Single dwellings accounted for 78,404 starts last year compared with 75,339 in 1968. Duplexes and semi-detached houses added 10,373 compared with 10,114 in 1968. Row housing starts increased to 10,701 and 8,042 and apartment starts totalled 110,917, up from 103,383. Last year ended with a record 137,357 dwellings of all types under construction. Starts in the first quarter this year are expected by Central Mortgage and Housing Corp. to be down from the opening quarter of last year. Completion in 1969 totalled 195,826 which fell short of the 200,000 expected by CMHC officials, but well up from

K of C. wants members

Fintan J. Alyward, State Deputy of the Knights of Columbus in Newfoundland, has announced that the Knights of Columbus in the province will participate in a move to commemorate the anniversary of the initiation of the late John F. Kennedy into the Knights of Columbus.

He said that during the months of February and March the thirteen councils in Newfoundland will join approximately 6,000 other Knights of Columbus councils throughout the United States, Canada, Mexico, Philippines, Puerto Rico, Canal Zone, Guatemala and Virgin Islands to encourage Catholic Laymen to become enrolled in the Order's most distinguished members.

The program, named the 'JFK Anniversary Tribute' has been launched by the Supreme Office of the Knights of Columbus in New Haven, Connecticut.

Mr. Alyward was in Boston on January 17 and 18 to be briefed on the program and to gather material for the program in Newfoundland.

170,993 in 1968.

SOUTH AFRICA LOOKS AT "THE EVIL TUBE":

To the government there it's a sticky issue indeed. Should it or shouldn't it allow its citizens to be exposed to something that is patently "evil, wicked and dangerous"? Sounds like cancer, right? Wrong. It's television. For years the ruling Nationalist Party government has banned the "tube" as a morally disruptive influence. But an increasingly vocal demand from prominent and well-heeled South Africans is forcing a reconsideration. So frustrated were many prosperous South Africans about being the only major Western nation in which live shots of the moon landing weren't shown that 23 of them flew 6,000 miles to London just to see the landing on hotel room T.V. sets. If T.V. does become a reality it may well deal a hard blow to one of the nation's most popular pastimes - movie-going. Without television and with night life scarce even indifferent films are well attended. Good ones are often standing room only.

Norman - Mouland wedding

The Sacrament of Holy Matrimony was solemnized at St. Paul's Anglican Church, Labrador City, on December 29, 1969, when Wilma Mouland, daughter of Mr. and Mrs. William Mouland, of Labrador City, became the bride of Mr. Jabez Norman, son of Mrs. Bertha Norman and the late John Norman, Port Union. Rev. William Bellamy officiated in the double-ring ceremony, assisted by Rev. William Mayberry of Carol United Church. The wedding music was played by Mrs. Etta Little and during the signing of the register Miss Denice Pafford sang the Lord's Prayer.

The bride entered the church on the arm of her father who gave her in marriage. She wore a floor-length gown of white peau-de-soie satin. The fitted bodice having a rolled collar, appliqued with white rabbit fur, with similar appliques on the cuffs and skirt. The skirt being fashioned on "A" lines. Her floor-length veil of tulle illusion was held by a band of fur and she carried a bouquet of red baby roses and fern.

Miss Linda Newman, a friend of the bride was matron of honour, and Miss Paula Mouland, sister of the bride was junior bridesmaid. Both attendants were in blue satin gowns, similar to the bride, the collars and sleeves being trimmed with white rabbit fur. They carried fur muffs, covered with a red rose and fern. They wore kerchiefs to match their dresses.

Mr. Rennie Mouland, brother of the bride acted as best man for the groom. Master Paddy Fewer was junior bridesboy. Mr. Bruce Sweetland, a friend of the

bride and groom ushered. The mother of the bride wore an ensemble of blue Fortrel with a corsage of white carnations and fern. The groom's mother, who is at Toronto was unavoidably absent.

The bride and groom, their attendants and parents received their guests at a reception held at the Knights of Columbus O'Brien Hall, Labrador City, following their marriage ceremony. Mr. Douglas Spracklin, principal of Labrador City Amalgamated School, and a friend of the groom was master of ceremonies. The toast to the bride was proposed by Captain Wilfred Hammond, S.A., and responded to by the groom, who in turn proposed a toast to the bride's parents. The toast to the bridesmaids was proposed by the best man. Captain Samuel Cullage, S.A., gave the blessing.

Telegrams of congratulations were received from the groom's mother and sister, the bride's godfather and other friends.

The bride's table was tastefully decorated with fresh cut flowers and the four tiered wedding cake was made and artistically decorated by Mr. Preston MacDonald formerly from St. Lucia, West Indies.

For going away the bride wore a winter white wool dress, green velvet coat and a corsage of pink carnations and fern. The bride and groom are both in the teaching profession and are employed at Gander Academy, Gander, having received their B.A. degrees at the convocation of Memorial University, May 1969.

Guests other than in town were from Port Union, Bonavista, Catalina and surrounding areas.

On the lighter side

Reports persist that dogs dote on this or that television program and they are probably true. Dogs will do almost anything to be with the kids.

The city council of Riverside, California reportedly honored a prominent Chinese citizen of the community recently by naming a street after him. It's called Wong Way.

In answer to the question, "How may one attain a good posture?", one boy wrote on his class examination paper, "Keep the cows off it and let it grow awhile."

A city dog met an acquaintance at a friendly curbstone. "What's your name?" inquired the acquaintance. "I'm not quite sure," admitted the city dog, "but I think it's Down Boy."

Then there was this lad who took a girl to dinner and to impress her, ordered the entire meal in French. He impressed her. He also impressed the waiter. It was a Chinese restaurant.

Clipped out of a Chicago column: "Wouldn't it be wonderful to have a marriage license that expired every few years like a driver's license?"

"Every time I asked you something," the angered husband said to his wife, "you answer all my questions with another question. Why?" "Do I really do that?" the wife replied.

EPA

jet service

from Labrador to Montreal and Newfoundland

Daily except Sunday the big EPA jets reach out to Montreal, Deer Lake, Gander and St. John's. Swift, comfortable jets. With smiling, friendly stewardesses who take the time to make your trip enjoyable.

fly with the friendlier people

EASTERN PROVINCIAL AIRWAYS

\$ 1.37 DAY FRIDAY FEB. 27th

- CARNATION MILK 7/1.37
- HEINZ CATSUP 5/1.37
- CAMPBELL'S TOMATO SOUP 9/1.37
- VOGUE TOILET TISSUE 12/1.37
- FOAM BACK MATS 18" x 27" 1.37
- GARBAGE BAGS 10 per Reg. 79c pkg. bag 3/1.37
- BOTTLE CAPS 12 DOZ. TO PKG. REG. 89c 2/1.37
- CUPS & SAUCERS Reg. 49c ea. 4/1.37
- ROAST WARMERS Reg. \$1.67 1.37
- ROUND TRAY 2/1.37
- 12 oz. BEER MUGS 2/1.37
- 3 pc. CAKE PAN 1.37
- DIVIDED DISH PAN 1.37
- GRAVY BOATS 1.37
- BUTTERDISH WITH KNIFE 1.37
- LADIES' HEAD SQUARES 3/1.37
- LADIES' PANTY HOSE Top selling shades 1.37
- RECORDS 45 R.P.M. REG. 2/1.37 3/1.37
- LADIES' MINI SLIPS Asst. colors S.M.L. 1.37
- JAVEX 5/1.37
- TIDE DETERGENT 3/1.37
- CAMPBELL'S VEGETABLE SOUP 9/1.37
- BABY WOOL SHRINK-RESISTANT Reg. 69c 3/1.37
- JACQUARD TOWELS Reg. 1.25 Assorted colours 2/1.37
- FLASHLIGHT & BATTERIES Reg. 1.99 1.37
- SYLVANIA LIGHT BULBS 40, 60, 100 wt. 6/1.37
- WASTE BASKETS Metal Baskets 1.37
- COLANDERS 2/1.37
- CUTLERY TRAYS 2/1.37
- ASSORTED TINWEAR 3/1.37
- LADIES' SLIPPERS Fur Trimmed Limited Quantity 1.37
- LAUNDRY TUBS 1.37
- TUMBLERS 11½ oz. - set of 8 6 oz. - set of 12 1.37
- GIRLS' TIGHTS Sizes 1-14 1.37
- LADIES' BRIEFS 2/1.37
- MEN'S WORK SOCKS Reg. 98c pr. 2/1.37
- L.P. RECORDS 2/1.37
- MEN'S DRESS GLOVES Fleece lined Assorted shades. 1.37

- MIXING BOWL SETS 2/1.37
- DRAINBOARD, MAT & DISH RACK 1.37
- LAUNDRY BASKETS 2/1.37
- COOKIE PAN SET 1.37
- 4 pc. MIXING BOWL 1.37
- DECANTERS 1.37
- WATER PITCHER 1.37
- KIDDIES' SWEATERS Asst. Styles and colors Sizes 2-14 1.37
- SLIP & PANTY SETS Sizes S.M.L. 1.37
- BOYS' SUEDINE DRESS GLOVES Reg. \$1.49 to \$1.89 1.37
- CHILDREN'S BLOUSES Long sleeves Sizes 7-14 1.37
- DISH PANS 2/1.37
- PAILS 2/1.37
- UNLINED RUBBER GLOVES 2/1.37
- 2 pc. BROILING PAN 1.37
- CASSEROLE DISH with cover 1.37
- ROASTERS 1.37
- 2 pc. CONDIMENT SET 1.37
- BOYS' DENIM JEANS Sizes 3-6x 1.37
- BRAND NAME BRAS White 1.37
- MEN'S BOXER SHORTS Assorted prints 2/1.37
- KIDDIES' SLIMS Assorted fabrics 1.37

AYRE'S WABUSH PLAZA

WE RESERVE THE RIGHT TO LIMIT QUANTITIES. All items will be on Sale at 9 a.m. and will not last all day. So SHOP EARLY

TUES - THUR 9 a.m. - 6 p.m.
FRI - SAT 9 a.m. - 9:30 p.m.

Collegiate holds its speech night

The J. R. Smallwood Collegiate, Wabush held its annual speech and awards night recently. Parents and friends gathered at the school gymnasium to hear reports on the years work and see the students performances, as indicated by the awards and certificates received, as well as enjoy them in drama and singing.

The programme opened with O'Canada followed by renditions

by the school choir, directed by Mrs. Mary Power.

Mr. William Kennedy, Guidance Councillor, acting as Master of Ceremonies welcomed the gathering. Following Mr. Kennedy's greeting the drama club, in a professional like manner, presented the play "The Intruder", Mr. C. Doyle was moderator.

Next came greetings from the two school boards, in the persons of Dr. James Hearn, Chairman of

the Labrador West R C School Board and Mr. W. Taylor, Chairman of the Labrador West Intergrated School Board. Following the chairman's remarks, reports were heard from the Principals of the two sections of the school. Mr. R. Rose of the Amalgamated and Mr. J. J. Rousseau of the Sacred Heart Section. To avoid repetition, both principals gave joint reports. Mr. Rose the first to speak, referred mainly to expenditure for education, increased enrollments and general topics associated with the school.

He reported that the academic year 1968-69 saw a staff of 51 teachers and 610 students, a teacher student ratio of 12. This year there are 659 students with 56 teachers, a ratio of 11.8. Basically the cost of education per pupil in the area is four times of that on the Island. Mr. Rose paid tribute to the teachers, pointing out the fact that the minimum education of teachers, grades seven to nine, is a Bachelor of Arts degree. He mentioned the concern of the staff for the problems facing today's young people, the drop outs etc., those with a lack of respect for society. The trained teacher, aware of these problems is rightfully concerned and very often frustrated because there is not always an easy solution. They realize the direct relation between the level of education and the growth of a nation. He emphasized the great asset to the individual student and to the nation as a whole in having knowledgeable people in the behavioural sciences and curriculum designing. References was also made to the local school boards.

In conclusion Mr. Rose referred to a successful parents' night held in November and thanked the staff and students

for the tolerance shown during the past few months of construction.

Best wishes for success were extended to the graduating class, and credit for a successful 1968-1969 was given to Mr. D. Howse, last year's principal.

Mr. J. Rousseau, the next speaker continued the joint report with the topics, curriculum and the programme of studies. He outlined the changes, additions etc., in the curriculum as follows: Religious Education. This year there is a teacher for grades seven to nine who also acts as co-ordinator and resource person to teachers. A junior high special class is set up in which an attempt is being made to help certain students experiencing academic difficulties. It is hoped the students will be able to return to the academic stream after a year in the class.

Investigation is being carried on in the hope of setting up a two year terminal business education programme for grades ten and eleven, where a certificate would be issued by the school.

The Science programme consists of Biology, Chemistry,

Earth Science, Physics, General Science and Modern Physical Sciences. Two teachers take care of the science programme.

The Industrial arts instructor is on Sabbatical leave and Wabush Mines has offered the use of their training department. The six instructors with this department do the industrial arts training at the school. Two people are responsible for each grade level.

Mr. Rousseau also announced that the Department of Education for the first time to his knowledge, has recognized the programme and the school's final mark for Grade eleven public exams and general programme credit.

The Industrial Arts and Home Economics programme operate in a two week cycle when each of the grades (six to eleven) spend an afternoon every two weeks in each course.

In conclusion Mr. Rousseau paid tribute to those responsible for the up-keep and operation of education in the area, notably Wabush Mines and the School Boards.

Diplomas were presented to the successful students by Mrs. J. Hearn and Mrs. W. Taylor.

"B" Hockey League schedule

Tues.	February 17	Royals vs Indians.
Fri.	February 20	Indians vs Wabush.
Tues.	February 24	Wabush vs Royals.
Tues.	March 3	Royals vs Indians
Fri.	March 6	Indians vs Wabush
Tues.	March 10	Royals vs Wabush
Fri.	March 13	Indians vs Royals
Tue.	March 17	Wabush vs Indians.

Semi-finals to begin March 20 with 2nd and 3rd place teams playing best three of five (3 of 5) games. 1st place team bye into finals.

Finals to be best four of seven (4 of 7) games.

THE ASHUA NIPI SOCIAL CLUB

IS NOW AVAILABLE FOR FRIDAY NIGHT BOOKINGS

NO CHARGE FOR USE OF FACILITIES

CALL THE MANAGER AT 944-2223

8 P.M. 8 SPECIALS

JACQUARD TOWELS

Jacquard towels in assorted colors. Thick, thirsty towels regularly sold for \$1.25, were reduced to 77c and now are selling for this special low price.

REG. 1.25 8 p.m. SPECIAL

49^c

LADIES' PANTY HOSE

Stock up on panty hose in all the latest shades and in sizes S.M.L.XL.

REG. 1.49 8 p.m. SPECIAL

97^c

LADIES' DRESSES

An excellent assortment of ladies' dresses in the latest styles and fabrics. Assorted colors in sizes 5 - 15, 8 - 20, & 16" - 22".

REG. 20.00 to 45.00 8 p.m. SPECIAL

7.47

LADIES' SWEATERS

A selection of fashionable ladies' sweaters in assorted colors and fabrics. Sizes S.M.L.

VALUES TO 12.00 8 p.m. SPECIAL

3.47

CHILDREN'S SLIMS

Keep them snug and warm in children's thermal, stretch slims. Sizes 4 - 6x.

REG. 5.00 8 p.m. SPECIAL

3.47

CHILDREN'S SWEATERS

Boys' and girls' sweaters in a wide selection of styles and colors. Assorted sizes.

VALUES 3.00 - 6.00 8 p.m. SPECIAL

2.47

CHILDREN'S DRESSES

Dress up your little girl in one of the many pretty dresses in this selection. Assorted styles and colors from which to choose. Sizes 2 - 14.

REG. 7.00 - 17.00 8 p.m. SPECIAL

4.47

AYRE'S WABUSH PLAZA

STORE HOURS: TUES. WED. THURS. 9 a.m. - 6 p.m. FRI. SAT. 9 a.m. - 9:30 p.m.

Labrador West television programs

WED., FEB. 25

- 4:30 - EDGE OF NIGHT
- 5:00 - STRANGE PARADISE
- 5:30 - TAKE THIRTY
- 6:00 - BOBINO
- 6:30 - LA BOITE
- 7:00 - BANANA SPLITS
- 7:30 - ZOOM
- 8:30 - BEVERLY HILLBILLIES
- 9:00 - IRISH COFFEE
- 9:30 - ANOTHER WORLD
- 10:30 - REDDICK PART 2
- 12:00 - CBC NEWS

THURS., FEB. 26

- 4:30 - EDGE OF NIGHT
 - 5:00 - STRANGE PARADISE
 - 5:30 - TAKE THIRTY
- Take Thirty visits a dedicated married couple who team up to help families in distress. The husband is a pediatrician and child psychiatrist, while his wife

is a social worker at a family education center.

- 6:00 - BOBINO
 - 6:30 - LA BOITE
 - 7:00 - BANANA SPLITS
 - 7:30 - ROCKET ROBIN HOOD
 - 8:00 - NATURE OF THINGS
- Nature of Things discusses this question with a group of distinguished Canadian physicians. You'll get many opinions, both medical and legal about death, plus a discussion of medical ethics in relation to transplants.

- 8:30 - BILL COSBY SHOW
 - 9:00 - LA BOHEME
 - 9:30 - DOSSIERS
 - 10:00 - BONANZA
 - 11:00 - ON THE BUS
 - 11:30 - CBC NEWS
- Chet Kincaid attempts to help a misguided teenager.

FRI., FEB. 27

- 4:30 - EDGE OF NIGHT
- 5:00 - STRANGE PARADISE
- 5:30 - TAKE THIRTY
- 6:00 - BONINO
- 6:30 - LA BOITE
- 7:00 - TRANS WORLD TOP TEAM

Take Thirty has a return visit with a dedicated husband-wife team who combine their talents to help families in distress.

Top students from Ottawa's St. Pius the Tenth High School, meet an Hawaiian all-star team. This is the fourth game in this exciting series of quiz competition, and this week you'll also see highlights of the student's activities in Ottawa.

- 7:30 - CORSAIRS
- Nicholas and Louba manage to escape from their "high seas prison." Their freedom is short

lived, however, and they soon find themselves in the hands of a man who is the absolute master of a small island.

- 8:00 - SINGALONG JUBILEE
- 8:30 - DONALD LAUTREC
- 9:00 - QUELLE FAMILLE
- 9:30 - LAUGH-IN
- 10:30 - MISSION IMPOSSIBLE

A tiny dog aids the IMF in a perilous journey to the stronghold of a narcotics kingpin. When Jim Phelps is stumped for another way of retrieving a vital list of undercover agents from its hiding place, he recruits man's best friend.

- 11:30 - CBC NEWS
 - 11:50 - LATE NIGHT THEATRE
- Season of Passion.

SAT., FEB. 28

- 4:30 - CURLING
- Rinks skipped by Swedish National Champion Chris Wessel and B.C. Champion Duke Smale compete.

- 5:30 - TOUR DE TERRE
- 6:00 - LASSIE
- 6:30 - BUGS BUNNY ROAD RUNNER
- 7:30 - GALLOPING GOURMET

The Galloping Gourmet adds spice to your life with "Sauerbraten," a classic Austrian dish.

- 8:00 - ATOMES ET GALAXIES
- 8:30 - N.H.L. HOCKEY
- 11:00 - LES COUCHE-TARD
- 11:30 - CBC NEWS
- 11:50 - CINEMA Ariane.

SUN., MARCH 1

- 4:30 - MY WORLD AND WELCOME TO IT
- 5:00 - M. SURPRISE
- 5:30 - THIS LAND OF OURS
- 6:00 - HYMN SING
- 6:30 - WONDERFUL WORLD OF DISNEY
- 7:30 - ED SULLIVAN SHOW
- 8:30 - JINNY & HISTOIRES VRAIES
- 9:30 - THE DAY THEY KILLED THE SNOWMAN

An ad agency art director begins to get the message that he's not quite "with it." At work his ideas are rejected, while at home his wife and long-haired son treat him with open hostility.

MON., MARCH 2

- 4:30 - EDGE OF NIGHT
- 5:00 - STRANGE PARADISE
- 5:30 - TAKE THIRTY
- 6:00 - BOBINO
- 6:30 - LA BOITE
- 7:00 - A PLACE OF YOUR OWN
- 7:30 - ADVENTURES OF TOM SAWYER
- 8:00 - FRONT PAGE CHALLENGE
- 8:30 - A LA SECONDE

- 9:00 - LE PARADIS TERRESTRE
- 9:30 - THE BOLD ONES

A young soldier seeks escape from his military commitment in the sanctuary of a church. A free-thinking priest gives aid to the young man, aid which results in personal danger to the priest from the actions of the serviceman's well-meaning buddies.

- 10:30 - THE GOVERNOR & J.J.
- Governor Drinkwater gets himself involved in one of the most dog-goned situations of the season. It seems that the Governor has this thing about "jogging," and this basset hound has this thing about "jogging governors." And J.J. has this thing about "jogging governor-loving dogs."

- 11:00 - MAN AT THE CENTER
- 11:30 - CBC NEWS

TUES., MARCH 3

- 4:30 - EDGE OF NIGHT
- 5:00 - STRANGE PARADISE
- 5:30 - TAKE THIRTY
- 6:00 - BOBINO
- 6:30 - LA BOITE

Top students from Elia, and Woodbine Junior High Schools, compete in games of skill and knowledge.

- 7:30 - NFLD., NEWS DIGEST
- 8:00 - RED SKELTON SHOW
- 9:00 - RUE DES PIGNONS
- 9:30 - MOI ET L'AUTRE

- 10:00 - NAME OF THE GAME

Dan Farrell tries to prove that a very successful psychiatrist is a gold-digging fraud. Farrell arrives at the doctor's fabulous estate under the pretense of visiting a friend, but once inside, he gathers evidence to expose the phony.

- 11:30 - CBC NEWS



DRAMATIC WESTERN ADVENTURE - Bonanza, the exciting Western Series, centers around the Cartwright family - Ben, Hoss and Little Joe, and their hired hand Candy. The stories are based on Nevada's mining, ranching and timbering days in mid 19th century, and the show is seen Thursday evenings on CJCL Television. Starring are (L to R) Michael Landon, Dan Blocker, Lorne Greene and David Canary.

TV REPAIR

WE ALSO SERVICE

RADIO, TAPE-RECORDERS
HI - FI - STEREO
TWO - WAY RADIOS
ALL OUR REPAIR
WORK IS COVERED
WITH A GUARANTEE
CALL

ALEX HICKS

AL'S ELECTRONIC CENTRE

PHONE
944-5268

Speaking of sports by Jack Drover

LABRADOR INTERMEDIATE "B" PLAYOFFS

The stage is set for the first Labrador "B" playoff that will be held at the Arena over the weekend. Teams are coming in from Churchill Falls and Goose Bay for the single round-robin series. The first game on Friday night will feature; Labrador City facing off against Goose Bay, starting at 8 pm. On Saturday Churchill Falls play Goose Bay at 8 pm while, on Sunday afternoon at 2, The Carol Lakers will face Churchill Falls. An exhibition game featuring the local "A" all stars and an all star team from the three "B" teams is scheduled for Sunday at 8 pm.

This hockey promises to be very exciting and certainly worth seeing.

WINTER CARNIVAL

Winter Carnival is now less than three weeks away and once again this year Carnival will be highlighted by many sports activities.

As I look at the schedule I see ski-doo races scheduled for both Sunday the 15th and the 22nd. Again this year there will be a broomball series between the various schools in the area as well as a figure skating exhibition and the annual minor hockey tournament.

The outstanding event of the whole Carnival will be the Canadian Ski Championships to be held at Smokey Mountain on March 20th, 21st and 22nd. The preceding weeks will see the Atlantic Championships on the hill.

On the senior hockey scene, the All Nfld Intermediate "A" finals will be held here on the weekend of March 21st, 22nd and local "B"

league's senior finals will open on Friday evening, March 20th. The Badminton Club will be hosting an invitational tournament with a team from Sept Iles, while the Curling Club is planning a bonspiel. Also on the books is a dart tournament between teams in the area.

So whatever your game is you will certainly have the opportunity to participate during these 10 big days.

CURLING NEWS

The Nascopie mixed invitational bonspiel was held at the Carol Curling Club recently. Six teams from Schefferville and two from Sept Iles joined the local teams in the fight for the Canadian Bechtel trophy.

"A" division winners, and winners of this trophy were: Dennis Talbot, skip, Marion Talbot, mate, Hugh Bright second and Ann Bright lead. After 5 years of trying, Jim Janes finally won a divisional championship by skipping a team of Bernice Janes, Mrs. Pattison and Jigger Smith to victory, winning the Iron Ore Trophy and the "B" division championships.

A team skipped by Jack Dunkin won the "C" divisional championship with Gloria Dunkin, Eric Chaulk and Shirley Chaulk, mate, second and lead respectively. This team won the City Motors Trophy.

"B" League Hockey

As I report this week the Royals and Wabush Huskies are tied for first place in the "B" league with 14 points each, while the Indians follow close behind with 12.

On February 13th the Royals defeated Wabush 8 to 6 and they followed up with a 3 to 2 victory over the Indians last Tuesday.

In their 8 to 6 victory, Al Wells scored 5 goals to lead the way with Ed Butt adding 2 and Bill Todd a single. Pat Dawe led Wabush with 3 goals while Vince White added 2 and Ray Kavli the other. Only five minor penalties were called in the game in which the Royals outshot Wabush 44 to 39.

The Royals scored 3 goals in the third period for their come-from-behind victory. Cyril Tarrant scored the winner at 16:01, while Job Blackwood added the other two. Jerry Doyle and Eric Blondell replied for the Indians who outshot the Royals 37 to 33.

SCHOOL SPORTS

The school basketball series opened last week with all divisions seeing action. In the senior girls' series, Labrador City Collegiate had a two game lead following 30 to 16 and 28 to 19 victories. In junior girls' Nortre Dame Academy have won two games while Labrador City Amalgamated have won one and lost one, J.R. Smallwood Collegiate have lost both their games.

In the lone senior boys' game played to date, Labrador City Collegiate defeated JRS Collegiate 75 to 29.

MENS BASKETBALL

In the lone men's basketball game played last week the Teachers defeated the Braves 58 to 53. At the half the teachers led 37 to 28 but were out scored 25 to 21 in the second half.

LEGAL CARD

DAVID B. SPARKES

Lawyer - Advocate
Shopping Center Mall
Phone 944-5555

Arthur F. Miller

Lawyer Avocat is pleased to announce the opening of law offices in the Carol Shopping Centre Mall
OFFICE HOURS: MONDAY THRU FRIDAY
9 a.m. to 1:00 pm and 2 p.m. to 5:30 p.m.
TELEPHONE 944-5909

Call 944-2226 or 944-5323

FOR ALL YOUR DRY CLEANING AND LAUNDRY

Daily Pick-Up And Delivery

**CAROL LAUNDRY
& DRY CLEANERS**

PHONE 944-2226 or 944-5323

The youth column

by Sharon Bryans

Valentine's Day was celebrated in a swinging spirit at the Labrador City Collegiate when the student council sponsored a dance.

The band which provided the music was the Iriim Drum which had a new singer for the evening, Billy Sobering.

The lead singer Max Little was off to St. John's playing basketball. The students enjoyed the dance partially due to the improved music of the band

and the romantic Valentine atmosphere.

The senior boys basketball team left for St. John's on Friday, February 13th by EPA. They played four games during their stay on the Island, St. John's against Gonzaga High, Brother Rice, Bishops College and Prince of Wales Collegiate. They won their game against Gonzaga.

The senior girls team won against the Wabush team on Monday, February 16. There was also a teen dance at the O'Brien Hall on Friday, February 13, which did not look very promising at the beginning, but things picked up considerably at about 10 p.m. Music was provided by the Iriim Drum.

Thanks to the Royal Canadian Legion, who are paying for a band for the student council dance, which was held on Saturday, February 21.

The Chevilles provided the music and the event was a swinging success.

I feel the discipline in the high schools of this area,

leaves something to be desired. There seems to be little control over students in classroom situations and this results in a lax attitude toward academic progress. Some students seem to come to school only for a place to go and show very little real interest in learning. Those who are genuinely interested in obtaining a wealth of knowledge are inhibited. This situation could be remedied if those undesirable students were put in a separate class apart from others.

These ideas are only my own, so probably nothing can be changed unless the school's administration finds potholes in the way the school is being operated.

Another complaint I wish to make concerning our modern education system in Labrador City, concerns the wearing of uniforms....these have completely no relation to a person's academic progress or learning ability contrary to popular adult belief.

Minor Hockey

TEAM AND INDIVIDUAL STATISTICS

MOSQUITO DIVISION

TEAM	GP	W.	T.	L.	T.P.
Flyers	11	7	3	1	17
Maple Leafs	10	7	2	1	16
Seals	10	5	2	3	12
North Stars	11	5	2	3	12
Blues	12	3	3	6	9
Hawks	10	2	1	7	5
Penguins	12	-	4	8	4

LEADING SCORERS

NAME	GP.	G.	ASS.	T.P.
N. Kent	11	16	7	23
B. Roy	10	18	-	18
M. Peckham	11	16	2	18
S. Martin	10	10	4	14
M. Byrnes	10	6	6	12
M. Maurice	12	7	3	10
J. Rose	11	9	-	9
B. Leonard	10	8	1	9
C. Porter	11	8	1	9
K. Dicks	10	5	4	9

PEE WEE DIVISION

Team	G.P.	W.	T.	L.	T.P.
Canadians	8	7	1	-	15
Maple Leafs	8	4	1	3	9
Kings	9	2	4	3	8
Red Wings	8	2	2	4	6
Bruins	7	1	-	6	2

LEADING SCORERS

NAME	G.P.	G.	ASS.	T.P.
W. Reilly	8	13	6	19
E. Lake	8	11	2	13
F. Leonard	8	7	5	12
S. Tuan	8	6	5	11
G. Jenkins	8	6	3	9
C. Dumais	8	6	3	9
F. Sikma	8	4	5	9
T. MacDonald	7	6	1	7
A. Trahan	9	6	1	7
E. Byrne	8	3	3	6

BANTAM DIVISION

TEAM	G.P.	W.	T.	L.	T.P.
Royals	16	9	3	4	21
Braves	16	8	3	5	19
Wabush	16	3	2	11	8

LEADING SCORERS

NAME	G.P.	G.	ASS.	T.P.
T. Costigan	15	25	10	35
R. Snow	16	24	7	31
G. Hunt	16	18	11	29
B. Bullen	16	20	4	24
C. Gear	16	9	10	19
B. Kerr	16	8	10	18
T. Reddick	16	4	14	18
M. Surette	16	9	8	17
B. West	16	3	14	17
P. Penny	16	13	3	16

MIDGET AND JUVENILE

TEAM	G.P.	W.	T.	L.	T.P.
Huskies	8	4	1	3	9
Saints	7	4	-	3	8
Carol Cleaners	9	3	1	5	7

LEADING SCORERS

NAME	GOALS	ASS.	T.P.
G. Power	15	11	26
B. Lake	8	13	21
J. Bullen	11	8	19
F. Hicks	12	5	17
G. Munn	11	5	16
G. Peckham	6	7	13
G. Normore	9	3	12
L. Gosse	3	9	12
F. March	6	2	8
W. Williams	5	3	8

Mind teaser

A plot of ground is 72 feet longer than it is wide. If its width were increased by 8 feet, its area would then be 5700 square feet. What are the present measurements of this plot?

ANSWER

42 by 114 feet. Letting X equal width and (X plus 72) the length, form equation: (X plus 8) times (X plus 72) equals 5700. Solve for X, the width; add 72 to this result for the length.

Information column

WANTED, one furnished basement apartment, suitable for two working girls. Telephone 944-3160.

WANTED by single working girl, room and board. Interested parties please call 944-5843 or 944-5716.

DAY CARE available, registered nurse will care for infants in her own home. Call 944-2938.

ROOM FOR RENT, to couple with no children, telephone 282-3118.

FOR RENT, furnished house until June, call 944-2367.

LOST: somewhere between 327 Viking Crescent and the Salvation Army Citadel, 1 boys Cub belt and money pouch, finder please telephone 944-5417.

FOR SALE, 1 pair of men's CCM Skates, size 7, worn only 4 times. Price \$10.00, 1 hardwood double bed and spring, Price \$30.00; 1 set of drums complete, bought for four hundred and fifty dollars, now selling for one hundred and sixty dollars. Telephone 944-2525.

FOR SALE, 2 prs. Ladies' Ski Boots, (lace ups) size 8, 1 pair, never used, \$25; 1 pair hardly used \$20. Phone 944-5661 after 6 p.m.

FOR SALE, complete household furniture including stove, refrigerator, and washing machine, call 944-2367.

FOR SALE, 1 cassette (Sanyo tape recorder, Phone 944-2445

FOR SALE, 2 electric stoves, 1 chrome kitchen; set 1 baby crib and mattress, 1 refrigerator. Phone 944-5336.

FOR SALE, 1, 7hp snowblower won at recent K of C raffle, never used, reason for selling, owner living in Bunkhouse. Retail value \$750.00. Selling for best offer, interested persons please phone 944-2386 or 944-8464.

Ante Needle Class will commence, Thursday, February 26th. Two classes will be held, at 1:30 and 7:30 p.m. Interested persons are asked to make arrangements with the Public Health Nurse.

There will be a dance at the Ashuanipi Social Club, sponsored by the Labrador City Local Association of Guides and Brownies on Friday March 6th at 8:30 p.m. Music will be provided by the Krystals. For

further information call 944-2224.

Games night will be held at the RC Church basement on Wednesday, tonight.

The regular games night will be held at the Anglican Church basement, Friday, February 27th.

A games night will be held at the Wabush Recreation Centre on Saturday evening, February 28.

The power of nature

BY LAWRENCE JACOBS

The cold brisk days of winter,
With its snow bedazzled trees
And Rows of crystal candlesticks
Hung neatly from the eaves
Of beggars homes and palaces of great
and wealthy men;
While in the woods, the sleeping bear
still slumbers in its den.

The forms of fur-dressed people,
Still battling Nature's power-
To cover everything with snow-
Work constantly each hour
To dispose of the needless dew that's
solidified by cold;
While the bear and beaver never think
of moving from its hole.

The days are getting shorter
The sun has lost its power.
No more gurgling from the brooks,
No more flower's bower,
To provide view and pleasure for the
naturalist and bees;
But the warm and fur-dress animals
still roam among the trees.

Phone
282-6877

or
282-6632

WESTLAB

FOR ALL YOUR
FAVOURITE BEERS

India - Black Horse - Labatt 50
Molson's Export - Dominion
Blue Star - O'Keefe
Molson's Canadian



Home Delivery Service:
Monday to Saturday, 2 p.m.
to 9 p.m.

Warehouse Pick-up Service:
Monday to Friday 5 p.m. to 9
p.m. - Saturday 1:30 p.m. to
9 p.m.

Telephone orders taken,
Monday to Saturday 9 a.m to
9 p.m.

282-6877 or 282-6632

ALL CLASSES
OF
INSURANCE
(except life)

GERALD NEARY

Representing
R.C. Anthony Insurance

PHONE
944-2339
after 5 p.m.

All Day Weekends.

Labrador West radio

MONDAY THRU FRIDAY FROM 6:00 a.m. to 7:00 p.m.

6:00 a.m. - CBC News, Bright & Early Show and Shop Talk.
7:00 - CBC News, Bright & Early Show, NFLD/Labrador News and Thought for Today.
8:00 - The World at Eight and Preview commentary.
8:20 - Inland Weather, Sportsworld and the Bright and Early Show.
8:35 - The Max Ferguson Show.
9:00 - CBC News.
9:10 - Regional Roundup.
9:15 - Gerussi Show.
9:55 - Assignment for Consumers.
10:00 - The Today Show.

11:00 - CBC News and Matinee Part 1
11:55 - Assignment
12:00 - CBC News, Regional Roundup, Billboard and Community Events.
12:30 - CBC News, Regional Roundup, Sports and Announcements.
1:00 - CBC News and Weather.
1:15 - Afternoon
1:55 - Assignment
2:00 - Time Signal and CBC News.
2:03 - In Person
2:30 - Matinee
2:55 - Assignment - Personality
3:00 - CBC News and Home Free

3:55 - Assignment - Actuality
4:00 - CBC News and Canadian Roundup.
4:10 - Calling all Children.
4:30 - Tempo
4:55 - Assignment - Stocks
5:00 - CBC News and Tempo
5:30 - Sportsworld and Assignment National Sports.
5:40 - CBC Newfoundland and Labrador News, Sports and Weather.
5:55 - Assignment, Northern Canada.
6:00 - The World at 6.
6:30 - Regional Roundup and Special Reports
WEDNESDAY
7:00 p.m. - CBC News and Sounds Easy.

7:30 - Soundings
8:00 - CBC News and Concern.
9:00 - CBC News and Ideas.
10:00 - National News and From the Capitals.
10:15 - Five nights a week.
10:30 - Theatre Ten Thirty.
11:00 - News and the Music Man.
12:00 - CBC News, Sports and Weather.
12:15 - NFLD/Labrador News and Music Man.
1:00 - Sign Off.
THURSDAY
7:00 - CBC News and Sounds Easy
7:30 - Canadian Stars.
8:00 - CBC News and Bright Lights.
9:00 - The Clitheroe Kid.
9:30 - Music Roundabout from the Capitals.
10:15 - Five Nights a Week.
10:30 - Theatre Ten Thirty.
11:00 - News and Music Man.
12:00 - CBC News, Sports Scores and Weather.
12:15 - NFLD/Labrador News and Music Man.
1:00 - Sign Off

FRIDAY
7:00 - News and Sounds Easy.
8:00 - News and Radio Free Friday.
9:00 - News and Radio Free Friday.
10:00 - National News and From The Capitals.
10:15 - Five Nights a Week.
10:30 - Theatre Ten Thirty.
11:00 - News and Music Man.
12:00 - News, Sports Scores and Weather
12:15 - NFLD/Labrador News and Music Man.
1:00 - Sign Off.

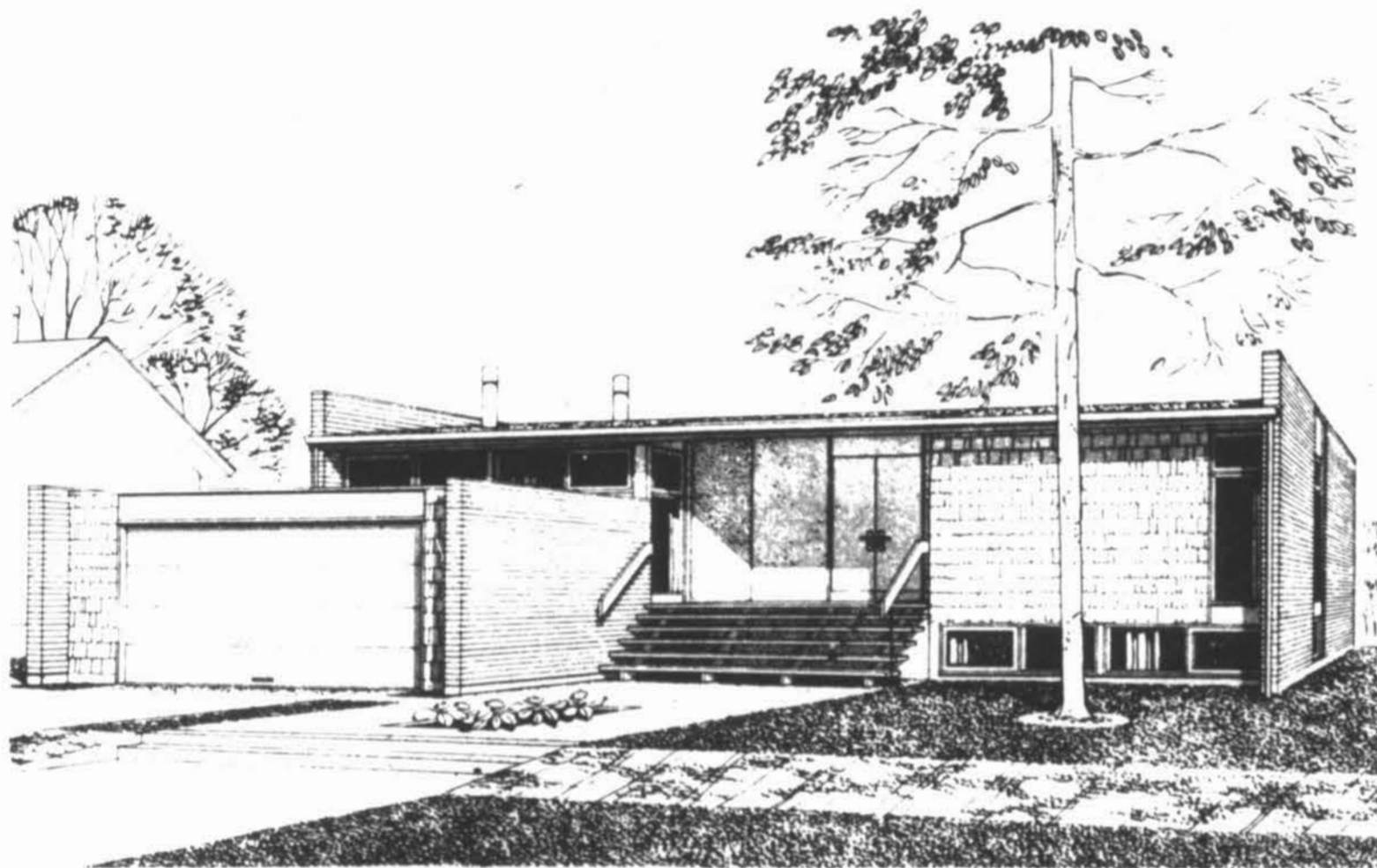
SATURDAY
6:00 - News and the Weekend Show.
7:00 - News and the Weekend Show.
7:45 - NFLD/Labrador News and Thought for Today.
8:00 - News and Local Weather.
8:15 - Sports Scene.
9:00 - News and From Our Own Correspondent.
9:10 - Regional Roundup.
9:15 - Alarm Clock
10:00 - News and Action Set
11:00 - News and Action Set Part 2
12:00 - News and Regional Roundup.
1:00 - News and Local Weather
1:15 - Sound of Britain
2:00 - Time Signal and CBC News
2:10 - Sounds of Britain
3:00 - Country Jamboree
4:00 - Moka mie Mountaineers
4:30 - Top Ten
5:00 - Saturday Date
6:00 - NFLD/Labrador News and Saturday Date
7:00 - News and Inland Weather
7:10 - Indian Magazine
8:00 - News and On Stage
9:00 - News and Top of the Pops
10:00 - News and CBC Stage
11:00 - News and Saturday Set

SUNDAY
7:00 - News and Music in The Air
8:00 - News and Canadian Stars
8:30 - Exotica
9:00 - CBC News
9:05 - Sunday Serenade
9:30 - CBC Winnipeg Orchestra
10:00 - News and Sunday Magazine
11:00 - News and Church of the Air
12:00 - News, Week in Review and Regional Roundup.
12:30 - Labrador Affairs.
1:00 - BBC News
1:10 - Capital Report
2:00 - Time Signal and CBC News
2:03 - Continental Rhapsody
2:30 - Songs of Faith
3:00 - News and Just Minute
3:30 - Symphony Hall.
5:00 - News and CBC Showcase
6:00 - News, and Funny You Should Say That
6:30 - Cross Canada Check-up.
7:00 - News and Inland Weather
7:10 - Cross Country Check-up.
8:30 - NHL Hockey
11:00 - National News and Weekend Sound of Sports.
11:30 - Stars at Night
12:00 - News, Sport Scores and Weather and Sign Off.

MONDAY
7:00 - News and Sounds Easy.
8:00 - News and As It Happens.
9:00 - News and As It Happens.
10:00 - National News and From The Capitals.
10:15 - Five Nights a Week.
10:30 - Theatre Ten Thirty
11:00 - News and the Music Man.
12:00 - News, Sports Scores and Inland Weather.
12:15 - NFLD/Labrador News and Music Man.
1:00 - Sign Off

TUESDAY
7:00 - News and Sounds Easy
8:00 - News and Between Ourselves
9:00 - Folk Sounds
10:00 - National News and From the Capitals.
10:15 - Five Nights a Week.
10:30 - Theatre Ten Thirty.
11:00 - News and Music Man
12:00 - News, Sport Scores and Weather
12:15 - NFLD/Labrador News and Music Man
1:00 - Sign Off

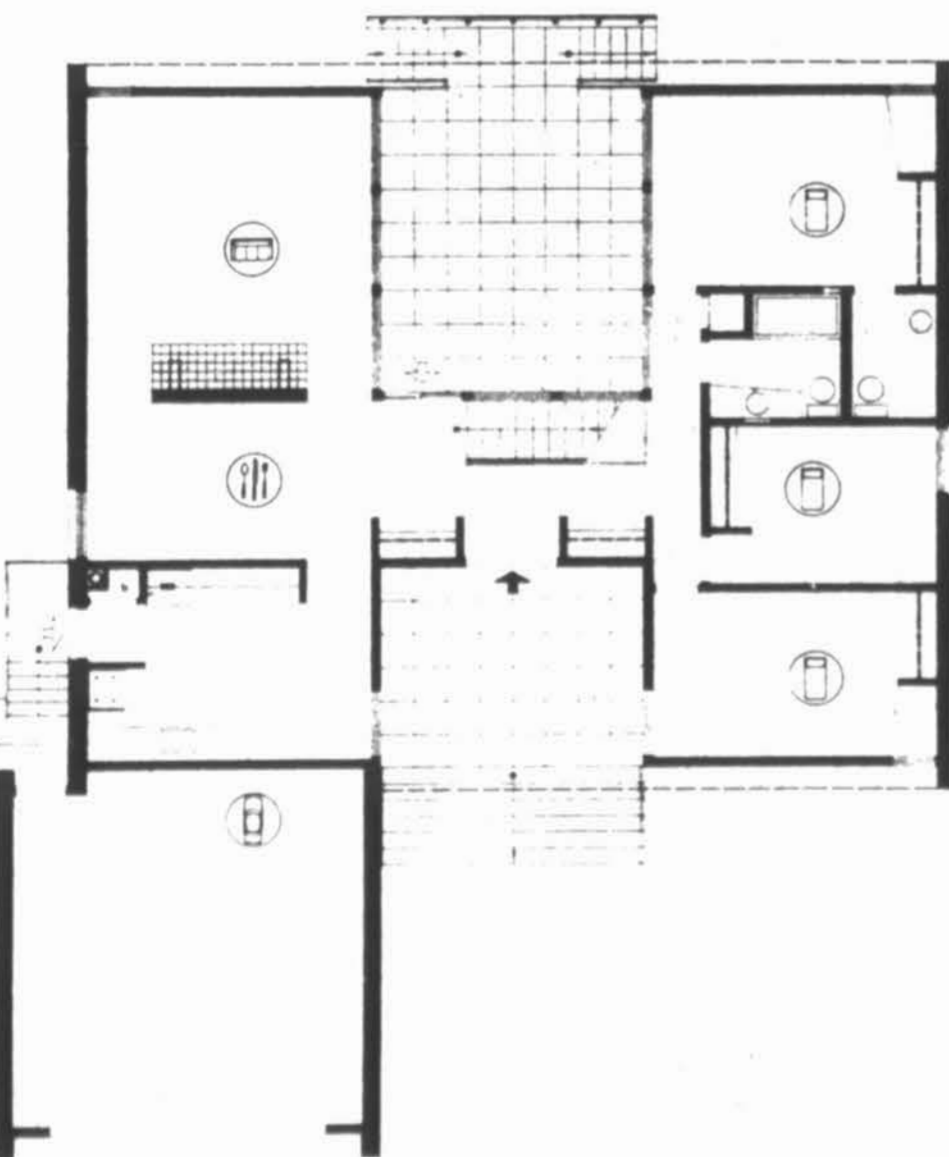
What's new in home designs?



NEW HOUSE DESIGN - This 3-bedroom bungalow, designed by Architects DENNIS & FREDA O'CONNOR & MALTRY of Edmonton, has many interesting and attractive features.

A raised patio, placed higher than usual on the ground, provides bright fresh rooms in the basement. In addition to the furnace, laundry and storage areas, the basement provides ample space for an extra bedroom, bathroom, family room and study. The entrance hall effectively divides the living and bedroom areas and looks out to the patio. For best siting the front door should face north or west.

The floor area, exclusive of the attached garage, is 1,540 square feet. The exterior dimensions, including the garage, are 54 feet by 62 feet two inches. Working drawings of this house, known as Design 2338, are available from Central Mortgage and Housing Corporation at minimum cost.



MIND TEASER

If it takes 5 men 4 days to do a certain job, how long would it take 8 men of the same caliber to do the same job?

ANSWER

2½ days. Let X equal number of days required by 8 men. Form proportion: 5 is to 8 as X is to 4; divide product of 5 and 4 by 8.

Scanning the market

By C.S. DEVINE

see which are the emerging industries that will benefit from the present trends and look to see which emerging companies within those industries could benefit most."

He sees oceanography, education and pollution-control fields as potentially promising growth areas, but he doesn't classify them as emerging industries. "It may still be a little too early for them," said this executive. "Nobody has really made much money yet" in those fields, and some of the most promising activities so far are being conducted within divisions of major corporations, "where it's only a small piece of action," he adds. He considers land development an emerging industry. "Within the next decade we're going to see the four-day workweek and longer vacations," he predicts. This, coupled with the trend toward greater discretionary income, "is bound to mean more country living, second homes, a piece of land in Florida or Vermont, and prefabricated or mobile homes," he says. Increasing affluence and leisure also make the drug, health and hospital care field an emerging industry, he said. "You just have to look to the growth of your family medicine chest since you were a kid to see evidence of this trend," he concludes.

Since the Dow-Jones industrial average broke the 750 level the technical picture of the market

is not encouraging.

Of course, after the prolonged weakness, a technical rally is in order, and could for instance, take the shape of a spring rally. Following this, a further drop could take the market to 720 or even 700. This is assuming that the fight against inflation is continued with the same, inadequate, methods.

A change of this policy is likely to come as unheralded as the day of judgement or as valuation day nears, and we will probably hear a chorus of "we'll fight," and on, until we hear the whisper, "we give up." Therefore recent statements that the U.S. Federal Reserve Board might soon be able to reconsider its tight money policy, should not be taken as a precise indicator.

There are clauses in Mr. Benson's "White Paper" that encourage consumption rather than savings and this is likely to reduce the flow of investment funds. Moreover, one can see indirectly from the "White Paper" that the Canadian government intends to appropriate an increasing part of the Gross National Product for its own use, which is unfavorable for industry. The present position of the market is therefore rather insecure. Emphasis should now be placed on stocks that sell at a low price and are preferably supported by yield and asset value.

Letters

A letter to the MP

Mr. Peddle, Federal M.P.
House of Commons,
Ottawa, Ontario.

Dear Sir:
Thank you for your correspondence and continued interest in the affairs of our towns. We appreciate the action you have taken on communications and hope to hear from you soon as regards any progress made by the Minister of Communications.

We also thank you for our copies of the report on the Standing Committee on Transport and Communications and await with interest any recommendations as a result of these meetings.

Would also appreciate if you would consult with the Honourable Eric Kierans as regards Postal facilities in our towns. The population of both towns is well over 10,000 people and we still have to use General Delivery or pay for a Post Office Box to receive our mail.

We claim the service of a Postman for mail delivery similar to that of the other Canadian residents.

The present Telegram service is far below the standard of that enjoyed by other Canadian residents. We urge that you press the Minister to send in a senior official to look into these matters as soon as possible. Trusting we will have your full support.

Yours faithfully,
W. Armstrong; Chairman
Local Steelworker's Committee
Representing 3,000 Steelworkers
and their families.

The taxi question

The Editor,
Aurora

Dear Sir:-

Re: Miss Moore's letter in the February 10th issue of the Aurora. I presume I was the "only one other person who complained" but its very hard to receive complaints when there is no one to answer the phone. I suggest Miss Moore consult with the town manager on how many complaints He received on the subject. Also the statement made in his letter about groceries not being transported by taxis anywhere else except Wabush. I personally have had them transported with me in taxis in Sept Iles, Montreal, Cornwall and Preston (Ontario), in many towns and cities in Ireland, in London, England and in Capetown and Port Elizabeth, South Africa without any problems whatsoever. I've also made enquiries from people from other Provinces in Canada and from the United Kingdom and Europe and none of these people have ever met with this situation, until eleven months ago when the (then) two taxi companies in Labrador City amalgamated!

I complained about this restriction to take two very small and I repeat very small cartons and I wasn't given the option of carrying them to the cab myself. I did have a letter from Miss Moore in which she apologized for this taximan, but still this intolerable situation continues.

Therefore, I suggest that a regular bus service to and from Wabush, to and from the Airport and town service be put into operation immediately. It will cost much less than a taxi and we can "carry the necessities and have the remainder delivered by the stores" as suggested by Miss Moore.

Yours sincerely,
Elizabeth O'Neill
Hudson Drive
Labrador City.

Social calendar

WEDNESDAY

Royal Theatre - The Great Bank Robbery.
Ashuanipi Social Club - Movie to be announced.
Legion (Labrador City) - Social Evening followed by a dance.
O'Brien Hall - Dart Night.
Legion (Wabush) - Movie at 9 p.m.

THURSDAY

Royal Theatre - Carry on Doctor.
Ashuanipi Social Club - Movie to be announced.
Sir Wilfred Grenfell Hotel - Movie - Sand Pebbles.
Legion (Labrador City) - Dominion Darts.
O'Brien Hall - Games night at 8:30

FRIDAY

Royal Theatre - Carry on Doctor.
Ashuanipi Social Club - Movie to be announced.
Sir Wilfred Grenfell Hotel -

Movie to be announced.
Legion (Labrador City) - Dancing to the R-Kades.
O'Brien Hall - Teen Dance.

SATURDAY

Royal Theatre - The Magic World of Topo Gigio.
Ashuanipi Social Club - Dancing to the music of the Chevelles.
Sir Wilfred Grenfell Hotel - Dancing to the music of the Krystals.
O'Brien Hall - SPCA Dance.
Legion (Labrador City) - Dancing with the R-Kades.
Legion (Wabush) - Dance, music by the Checkmates at 9 p.m.

SUNDAY

Royal Theatre - To be announced.
Ashuanipi Social Club - Dance with the Chevelles.
Sir Wilfred Grenfell Hotel -


Dancing with the Krystals.
Legion (Wabush) - Mixed Darts at 1:45, games night at 8:30.

MONDAY

Royal Theatre - To be announced.
Ashuanipi Social Club - Movie to be announced.
Sir Wilfred Grenfell Hotel - Movie to be announced.
O'Brien Hall - Card game by the Polar Tops.
Legion (Wabush) - Dominion Darts at 7:15.

TUESDAY

Royal Theatre - To be announced.
Ashuanipi Social Club - Games night commencing at 9 p.m.
Sir Wilfred Grenfell Hotel - Movie to be announced.
Legion (Wabush) - Games night.

YAMAHA 

YAMAHA

YAMAHA

Before it was a Snowmobile it was a world championship motorcycle.


It's a better machine

NOW ON DISPLAY AT

JIM SWANSON & SONS
TELEPHONE 944-58

TIME WAS...

when average life expectancy was 22 yrs.

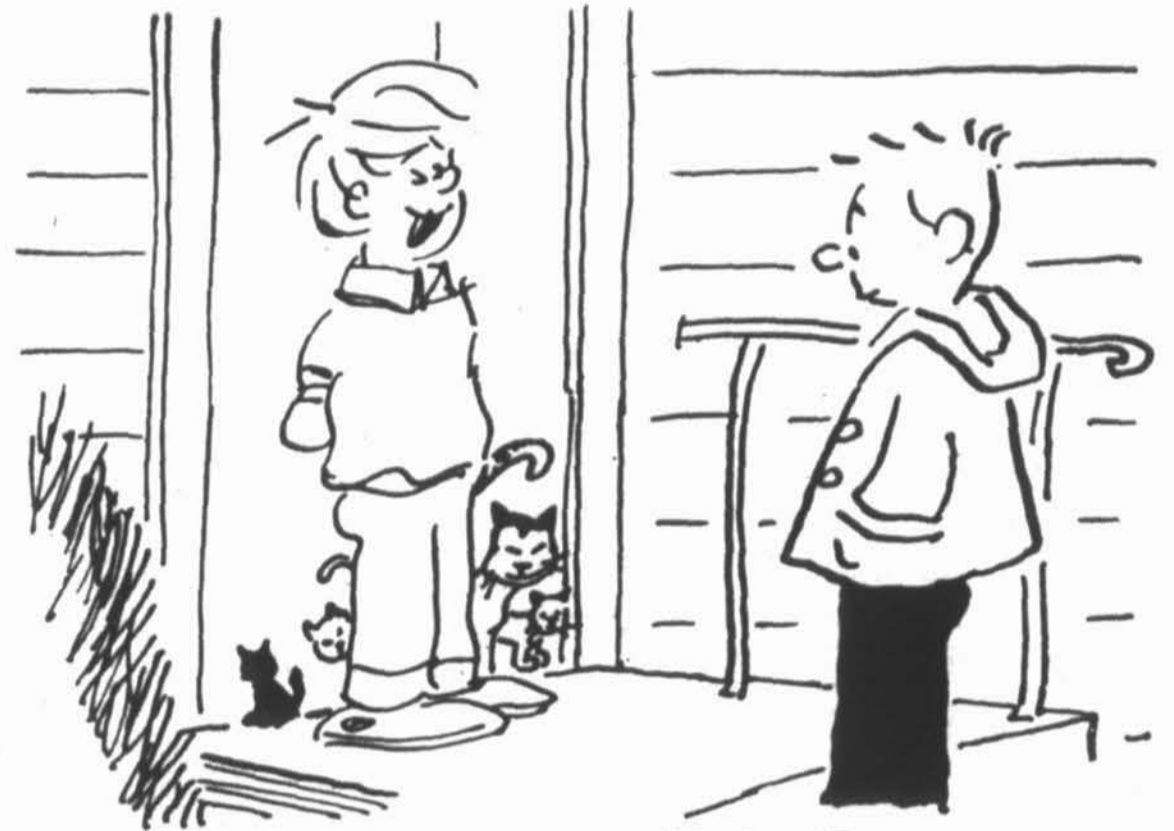
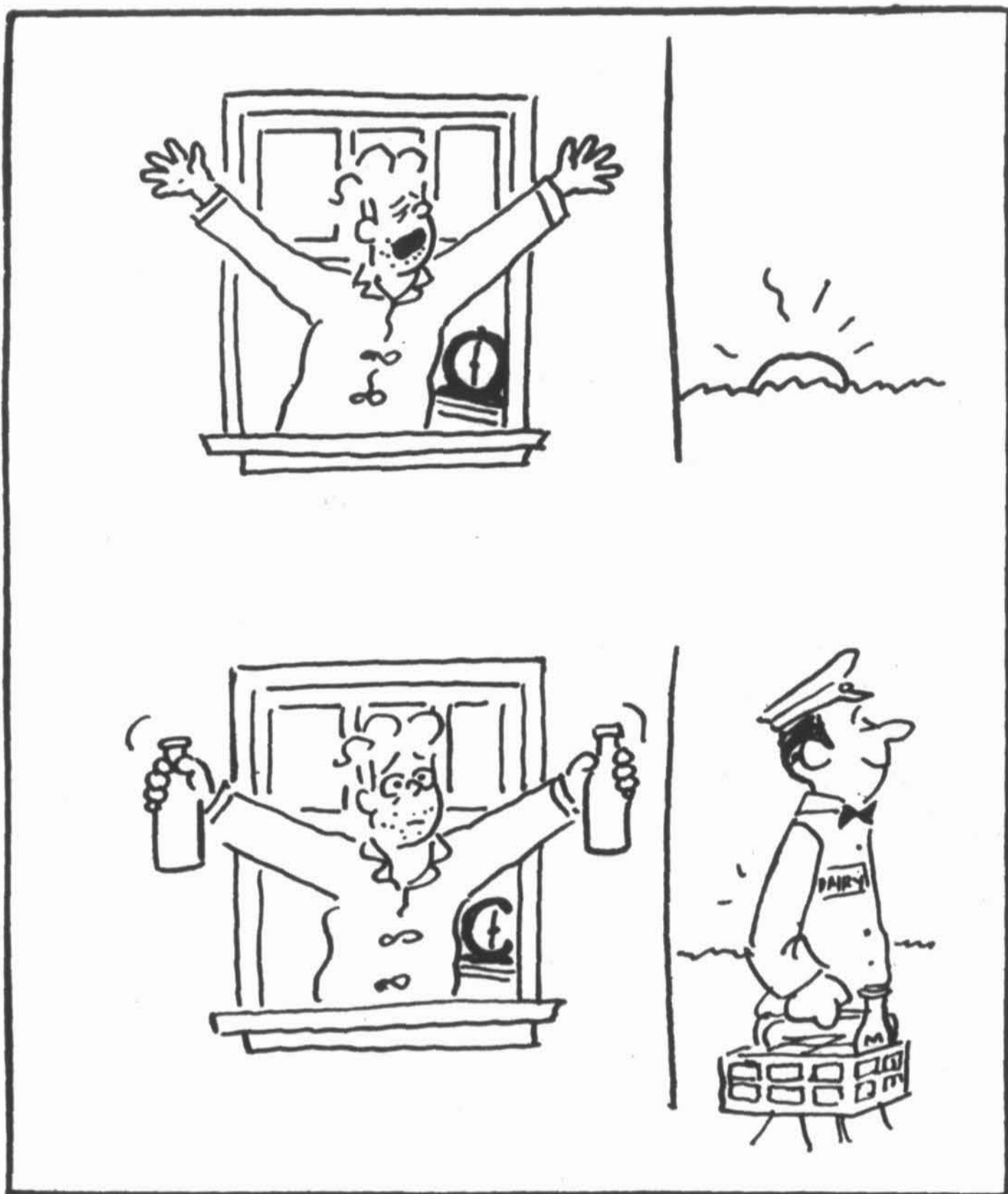


Back in the days of the Roman Empire, people only lived a short time. Today in the United States, life expectancy is 70 years!

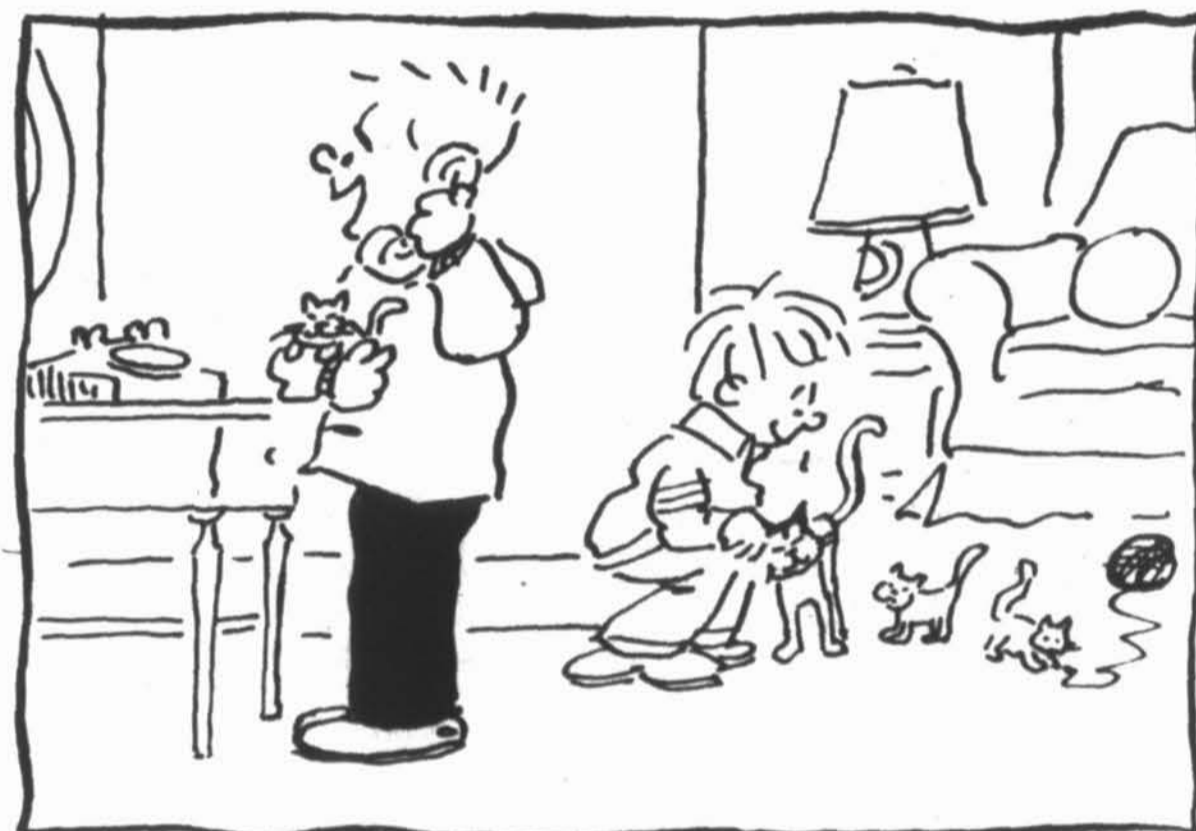
CITY DRUGS LTD.
SHOPPING CENTER - LABRADOR CITY
TELEPHONE 944-2448 or 5395

TRUDY

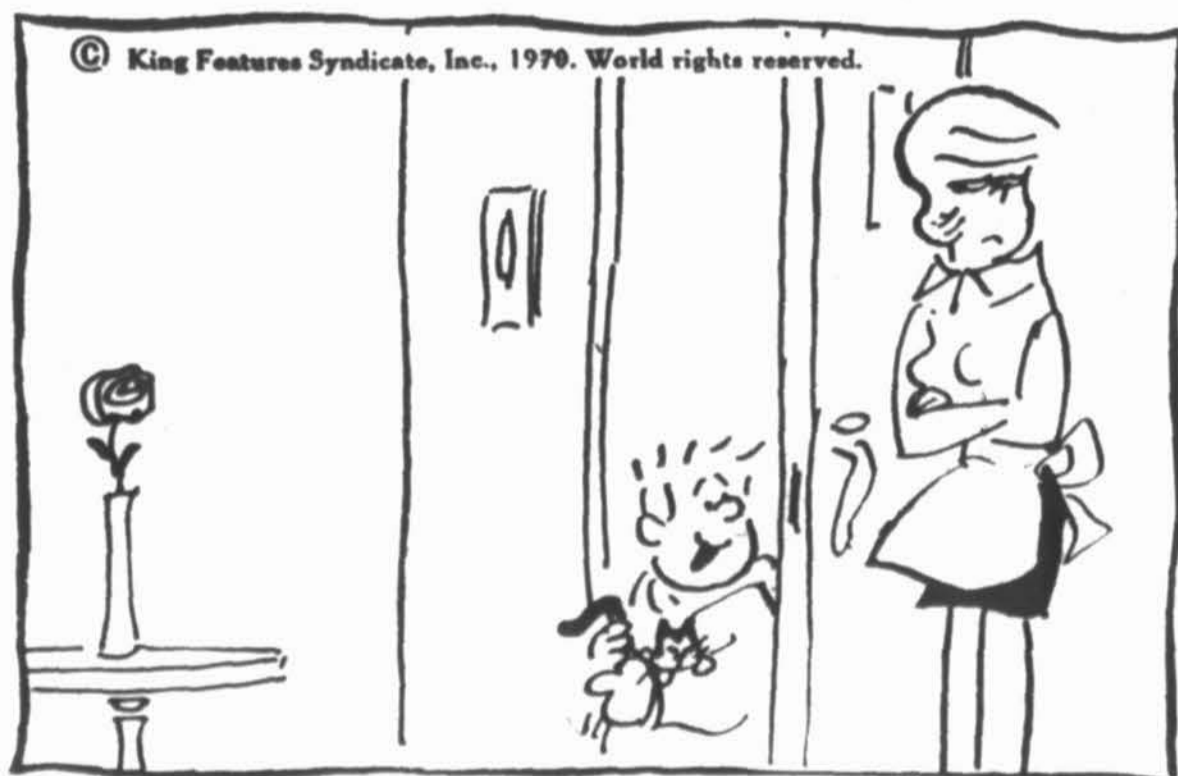
by Jerry Marcus



"Crawford, I'm a grandfather!"



"Mom, I'm at Blip Miller's house—and guess what!?"



© King Features Syndicate, Inc., 1970. World rights reserved.
"... And Mrs. Miller said I can keep her on ONE condition—that I give her milk every day."



Jerry Marcus
"I was just over to Moose Miller's house to return his book—why?"

NDA sports briefs

BY DES HICKS

JUNIOR GIRLS' VARSITY BASKETBALL SCORES:

NDA 34...LCA 31-NDA14...JRSC 28...LCA 11, LCA played at NDA Gym and on Tuesday February 24th, LCA played at JRSC, Thursday the 26th will see JRSC at NDA gym.

JUNIOR BOYS VARSITY BASKETBALL SCORES:

NDA 28...JRSC 24. The following schedule will be in effect for the remainder of this month. Wednesday the 25th, JRSC will play NDA at NDA gym. Friday, February 27th, JRSC will meet the Labrador City Amalgamated team at LCC gym.

In other games in the junior girls' varsity series, NDA edged LCA 34 to 31, NDA again defeated LCA at the LCA gym in a high scoring game with Paula Myers as high scorer for NDA with 13 points. NDA walloped JRSC 14 to 2 in a game played in the JRSC gym, high scorers were Shelly West and Paula Myers both with 5 points.

GIRLS' INTER-MURAL INDIVIDUAL BASKETBALL SCORING

Paula Myers	63 points
Phil Hurley	53 points
Sharon West	41 points
Pat Myers	24 points
Shelly West	22 points
Beverly Lawlor	19 points
Karen Normore	17 points
Cathy White	13 points
Beverly Maclean	11 points
Jackie Leonard	10 points
Debbie Power	10 points

GIRLS' TEAM STANDINGS

Capt.	Team	Points
Anne Lyonnais	6	16
Paula Myers	3	15
Pat Myers	4	13
Phil Hurley	2	9
Diane Gauvreau	1	6
Kathy White	5	1

BOYS' INTER MURAL (JUNIOR TEAM STANDINGS)

Capt.	Team	Points
Gerald Reddick	2	9
Brian Reddick	4	8
Tony Dawson	1	5
Dan Dupis	3	2

SENIOR BOYS' INTERMURAL TEAM STANDINGS

Capt.	Team	Points
Derik Alexander	3	8
Bernie Tremblay	1	8
Tom Day	2	6
Billy Bruce	4	0

TOP SCORERS IN SENIOR DIVISION

Derik Alexander	28 points
John Bastow	20 points
Bernie Tremblay	18 points
Jim Kennedy	16 points
John Kennedy	13 points
Billy West	11 points.

Mixed reaction to "Spoon River"

Very many controversial opinions have been expressed at the presentation of the play "Spoon River." It was welcomed on Thursday, rejected and argued over on Friday, and accepted and applauded on Saturday.

"Morbid" some people shouted, yet so youthful, charming, and touching on certain love scenes, and when the lady in brown recollects in her reminiscences, visiting the President.....

"Ferocious and aggressive," yes but aren't human relations very often tense, adverse and destructive?

"Depressing," yes if you persist in believing in a flowery existence of ideal behaviorism, of false respectability, and of romantic sentimentality..... But on the other hand, so "True" when you decide to open your eyes to reality and see through

that air of respectability all the intrigues and affairs which were going on then....and now.....Reluctant to this false hypocritical atmosphere the author reacts to all these situations with a cynical approach cauterizing very severely the false puritanism, which seemed to exist in the 1915 American society.

"Vivacious and powerful", when you stop and think that no false pretense remained unveiled.....

a "Difficult" play, most certainly yes.....and the merit of the interpretation is all the greater on that account.

These "epitaphs", spring so spontaneously from the souls and the mouths of the actors. By a Freudian introspection the souls of these dead people of Spoon River go through catharsis and if they weren't dead, you could believe hearing

these psychopaths relating their problems lying on the psychiatrist couch....And when, the subconscious world is let free what a fusion of romantic dreams and machiavelic intrigues can be forced back in human souls!

At this tense "ambiance" the songs and dances gave a happy break. There was a variety of voices which included imitations of German and Chinese accents. In the costumes the parallelism of colours for the men and women costumes was very helpful....Excellent effects of lighting and so very evocative and mystic at certain moments, sincere congratulations for the play of shadows and full light effects!.....

In general, a very meritable effort to all the team of actors, the people who worked backstage, the directors, and of course to "Patty" who directed and supervised the production so conscientiously.

We wish the best of luck to all of them, and it is to hear further happy news from the Dominion Festival competitions.

Church calendar

OUR LADY OF PERPETUAL HELP
Rev. J. Laperriere O.M.I. and Rev. F. Lemire. SUNDAY

9:00 a.m. Mass
11:00 a.m. Mass
5:00 p.m. Mass in French
7:00 p.m. Mass
Weekday Masses at 8:00 a.m., 5:00 p.m. and 7 p.m.

ANGLICAN MISSION OF LABRADOR WEST
St. Paul's, Labrador City
Rev. W.J. Bellamy, B.A. L.Th.

10:00-Holy Eucharist
7:15 pm - Evening Prayer
8:15 pm - Vestry Meeting
Sunday School - 10:00 and 11:30 am - Nursery and Kindergarten

10:30, Primary, Junior and Intermediate
Tuesday 7:00 pm Confirmation Class
8:00 pm - Choir Practice
Wednesday 7:00 pm Adult Instruction Class

ST. PETER'S CHURCH
Rev. W.J. Bellamy, B.A. L.Th.

8:00 am - Holy Communion
11:30 am - Morning Prayer
11:30 am - Nursery
Tuesday 4:30 pm Confirmation Class

CAROL UNITED CHURCH
Rev. William Mayberry
11:30 Morning Worship
7:15 Evening Worship
10:00 to 11:30 Kindergarten and Nursery School
10:30 Sunday School for Primary and grade 1

SALVATION ARMY
Captain Harold Rideout
11 a.m. Holiness Meeting
2:30 p.m. Sunday School
7:30 - Evangelistic Service

OUR LADY OF THE ASSUMPTION, WABUSH
REV. J. Blouin, O.M.I.
10:00 a.m. Mass
7:00 p.m. Mass
Weekdays except Friday Mass at 5:00 p.m.

Friday's Mass at 3:15
There is confession before each Mass.

CHRIST CHURCH WABUSH
(Presbyterian Church in co-operation with the United Church)

Reverend J.R. Dickey
9:45 a.m. Sunday School
11:00 a.m. Morning Service
PENTECOSTAL CHURCH
Pastor W.J. Gillett
11:00 a.m. Morning Worship
3:00 p.m. Sunday School
7:30 p.m. Evangelistic Service
Tuesday: Prayer Meeting at 8 p.m.
Thursday: Young People's Service at 8 p.m.

In court last week ...

Magistrate Rowe had a very busy week with several residents of Labrador City and Wabush appearing on various charges.

Last Monday a resident of Wabush was charged with impaired driving and was convicted and fined \$50.00. He is also prohibited from driving for six months.

A Labrador City resident was charged with theft in an amount not exceeding \$50.00. The accused pleaded and was fined \$30.00.

Two youths appeared before Magistrate Rowe, one, a resident of Wabush and the other a resident of Labrador City. The youths were charged with creating a disturbance in a restaurant at Wabush. Both were fined \$25.00 each. In addition they were charged with causing

malicious damage and paid a fine of \$50.00 each. The third charge laid against the youths was of break, entry and theft, both were convicted and sentenced to 1 day in jail plus having to pay a fine of \$50.00 each.

A resident of Labrador City was charged with assault, causing bodily harm. The accused was convicted of the offence and sentenced to three months in Her Majesty's Penitentiary at St. John's.

A club in Wabush was charged with a violation of the Alcoholic Regulations, that of serving Alcoholic Beverages to a person under the age of 21. A conviction was registered and the establishment paid a fine of \$10.00.

Two Labrador City residents

appeared in Court to answer charges of having in their possession liquor not obtained in accordance with the Liquor Act. Each was convicted and fined \$25.00.

A Wabush resident was charged with the Local Improvement District of Wabush, Snow Clearing Regulations. The accused was fined \$2.50 or one day in jail. He took the option of serving one day in jail.

Four speeding tickets were issued during the past week, three to residents of Labrador City and one to a resident of Wabush. All four paid the minimum fine of \$25.00 each.

ASHUANUPI AVIATION
Sightseeing Flights, Charter Flights
FLYING TRAINING
Airport: Phone 944-2395 -
Res. Phone 944-3350



Photography

PORTRAITS
WEDDING PICTURES
PASSPORT-PHOTOS
BABY PICTURES
GROUP PHOTOS

FOR APPOINTMENT CALL
944-5268
AURORA PHOTO

WEDDING STATIONERY



Photo Script

THERMO-ENGRAVED
by the creators of
The Bouquet Invitation Line

THERMO-ENGRAVING is distinctive raised lettering... rich-looking, elegant.

THERMO-ENGRAVING has that individual look of finest craftsmanship.

But it costs only about half as much as you'd expect.
Many other styles from which to choose.

MAYALEEN FLOWERS LTD.
282-3303

SAVE SAVE SAVE SAVE SAVE SAVE SAVE SAVE SAVE SAVE SAVE SAVE SAVE SAVE SAVE



Dollar Days Sale

BUTTERBALL TURKEYS

CANADA GRADE "A"
CRY-O-VAC
PRETE POUR
de four

RED DELICIOUS
DELICIOUS APPLES
POMMES
EXTRA FANCY
99¢ doz.

DINDES

YOUNG TENDER

6 - 12 lb.

49¢ lb.

APPLE JUICE

ALLEN'S 19-oz.
JUS DE POMME
VITAMINE

5 for pour

1.00

CALIFORNIA U.S.

CELERY **39** ea. ch.
NO. 1 GRADE 24's

CALIFORNIA U.S.

LEMON **49**
6 for pour
NO. 1 GRADE 140's

BABY

BEEF LIVER
FOIE DE BOEUF

2 lbs. for

1.00

FRESH EVERY HOUR

2 lbs. for

FRESH HAMBURGER **1.00**

BAKED BEANS

WITH TOMATO SAUCE
HEINZ - 4 1/2 oz.
FEVES CUITES A FOUR

8 for pour **1.00**

TOMATO KETCHUP

HEINZ 11 oz.
KETCHUP AUX TOMATES

4 for pour **1.00**

BEEF NOODLE SOUP
CHICKEN & RICE SOUP
HEINZ 2-1/8 oz.
COUNTRY GOOD

7 for pour **1.00**

PINEAPPLE SLICES

CREAMCO - 19 oz.
ANANAS TRANCHES

4 for pour **1.00**

GREEN PEAS

LYNN VALLEY - 19 oz.
ASSORTED SIZES
POIS VERT

4 for pour **1.00**

SPAGHETTI

IN TOMATO SAUCE
HEINZ 8 oz.
SPAGHETTI ET SAUCE
TOMATE AVEC FROMAGE

6 for pour **1.00**

TOMATO JUICE

HEINZ - 19 oz.
JUS DE TOMATE

6 POUR **1.00**

POUDING INSTANTANE

ROYAL

3-5/8 oz.
INSTANT PUDDING

6 for pour **1.00**

NEW STORE HOURS

TUESDAY
WEDNESDAY
SATURDAY 9 a.m. to 6 p.m.

THURSDAY
&
FRIDAY 10 a.m. to 9 p.m.

LES PRIX DES DENREES FRAICHES
SONT SUJETS A FLUCTUER

FRESH PRODUCE PRICES ARE
SUBJECT TO MARKET CHANGES.

YOUR FRIENDLY STORE

BOWRINGS

SUPERMARKET - LABRADOR CITY



PRICES EFFECTIVE UNTIL CLOSING SAT., FEB. 28th., 1970
PRIX EN VIGUEUR JUSQU'A LA FERMETURE, SAM., 28 FEV., 1970

SAVE SAVE SAVE SAVE SAVE SAVE SAVE SAVE SAVE SAVE